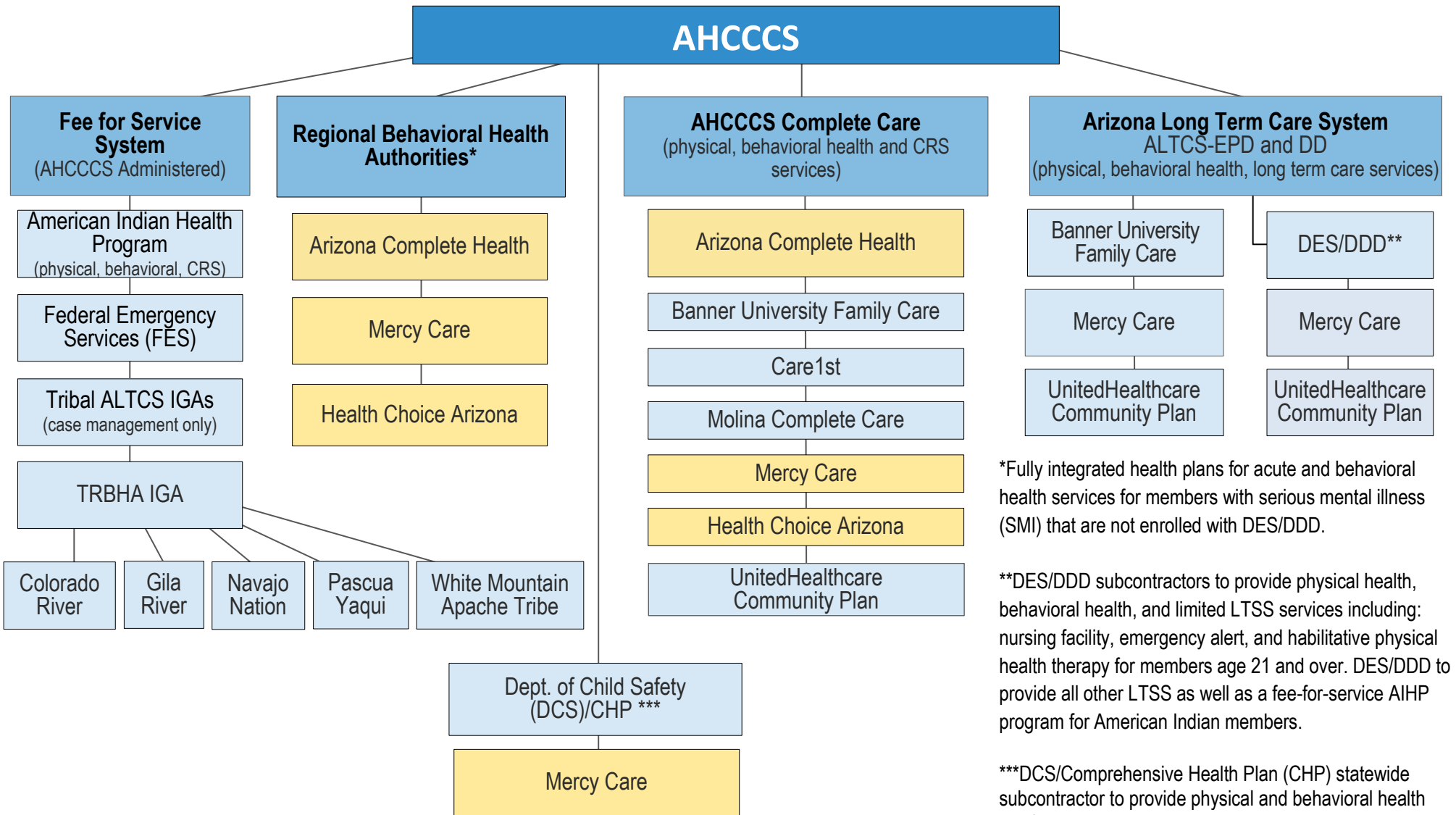


Care Delivery System Effective July 1, 2021



*Fully integrated health plans for acute and behavioral health services for members with serious mental illness (SMI) that are not enrolled with DES/DDD.

**DES/DDD subcontractors to provide physical health, behavioral health, and limited LTSS services including: nursing facility, emergency alert, and habilitative physical health therapy for members age 21 and over. DES/DDD to provide all other LTSS as well as a fee-for-service AIHP program for American Indian members.

***DCS/Comprehensive Health Plan (CHP) statewide subcontractor to provide physical and behavioral health services.