



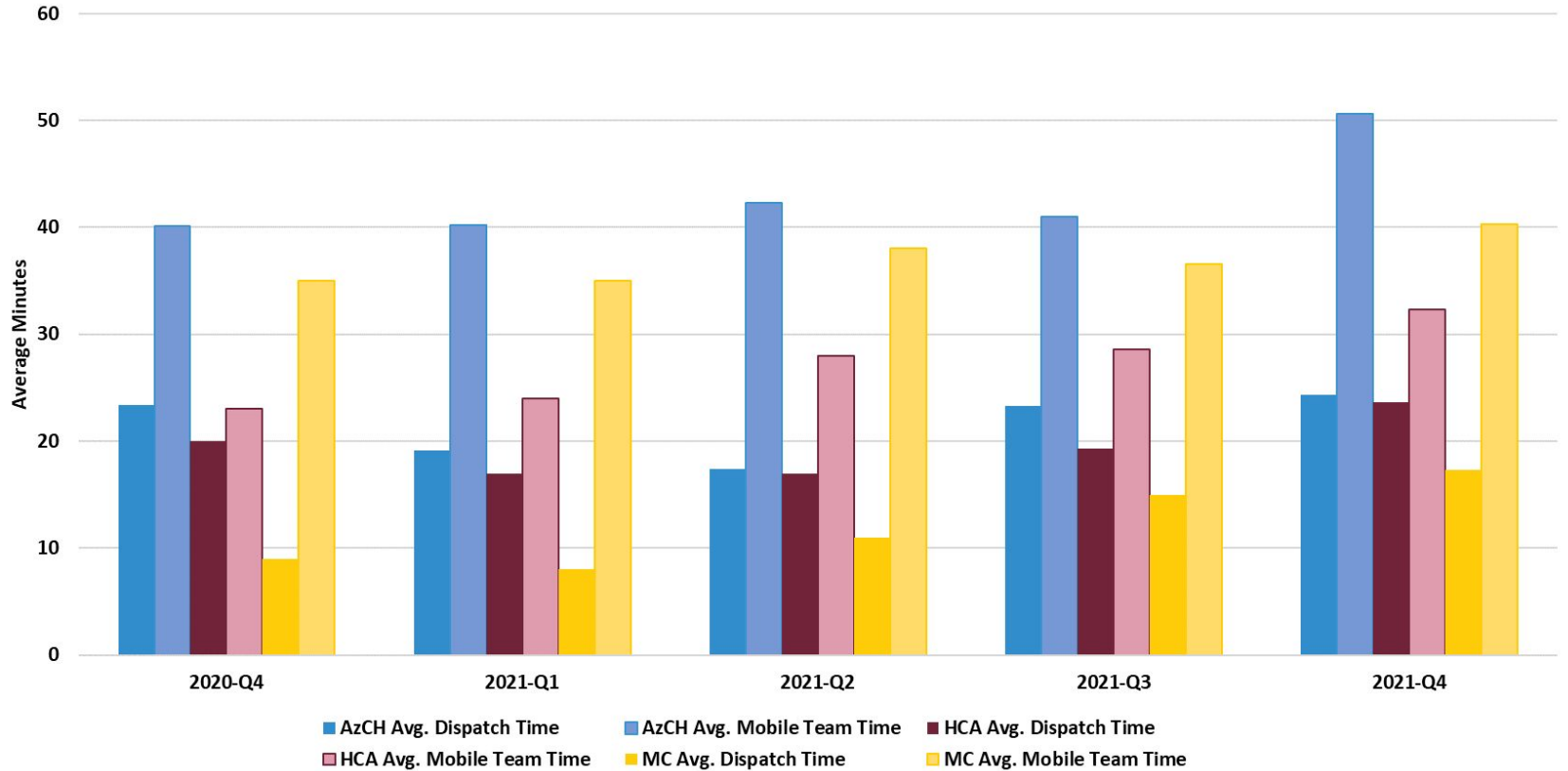
AHCCCS Foster Care Dashboard

07/01/2022

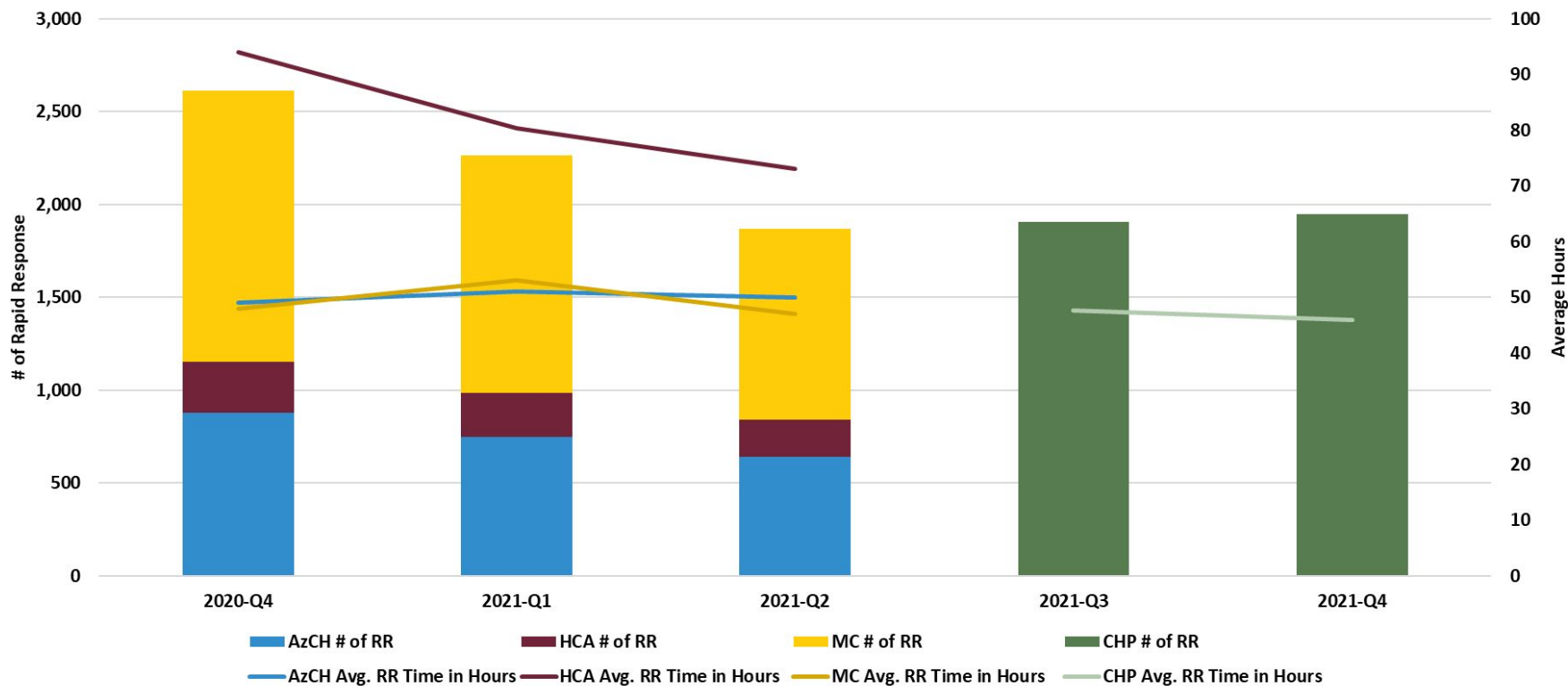
Timeframe

Quarter	Date
2020-Q4	7/1/2020 – 9/30/2020
2021-Q1	10/1/2020 – 12/31/2020
2021-Q2	1/1/2021 – 3/31/2021
2021-Q3	4/1/2021 – 6/30/2021
2021-Q4	7/1/2021 – 9/30/2021

Crisis Services – HP Self Reported



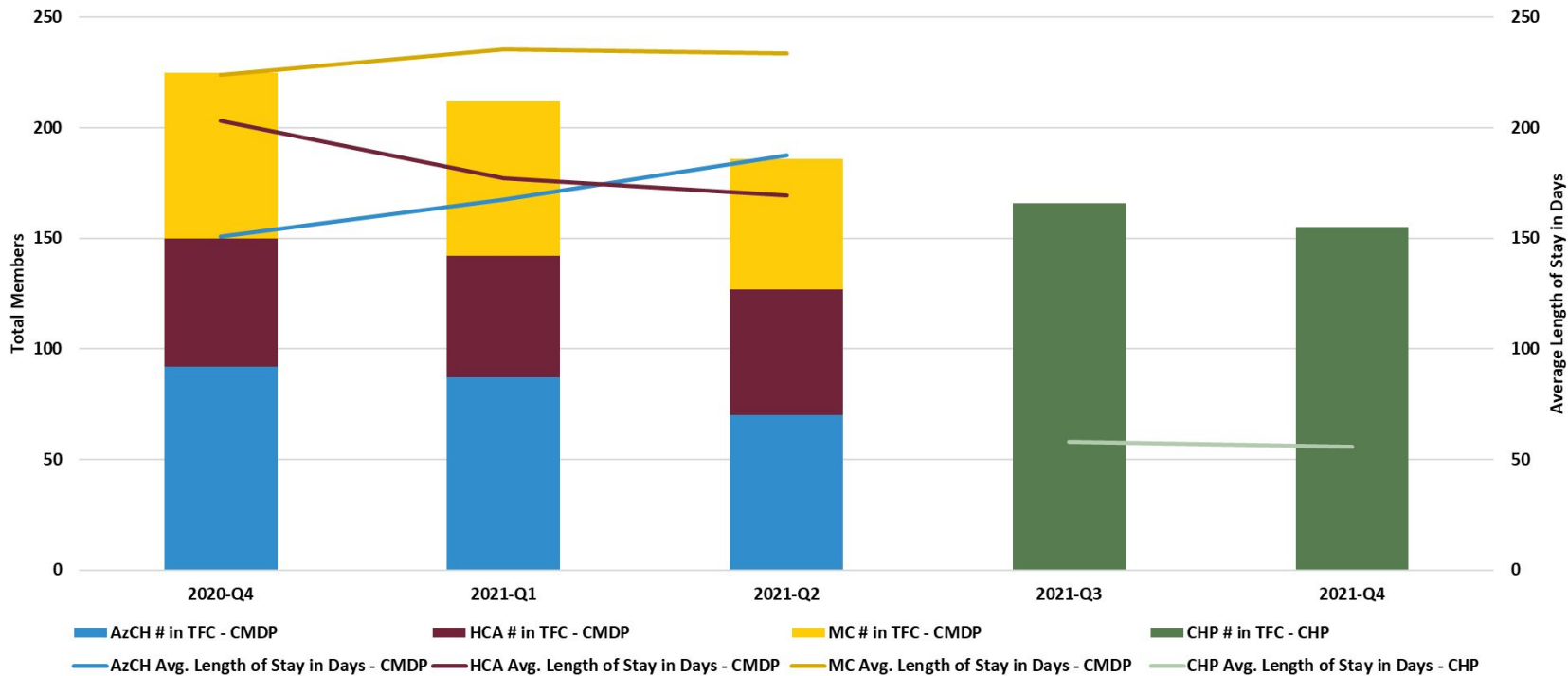
Rapid Response – HP Self Reported (72-hour requirement)¹



¹The previous three health plans (AzCH, HCA, MC) have been aggregated from the previously reported quarters. For the current reporting quarter, the data is from Solari, a subcontractor of DCS-CHP. The method is to get an average for the following: Rapid Response and Average Rapid Response Time in Hours.

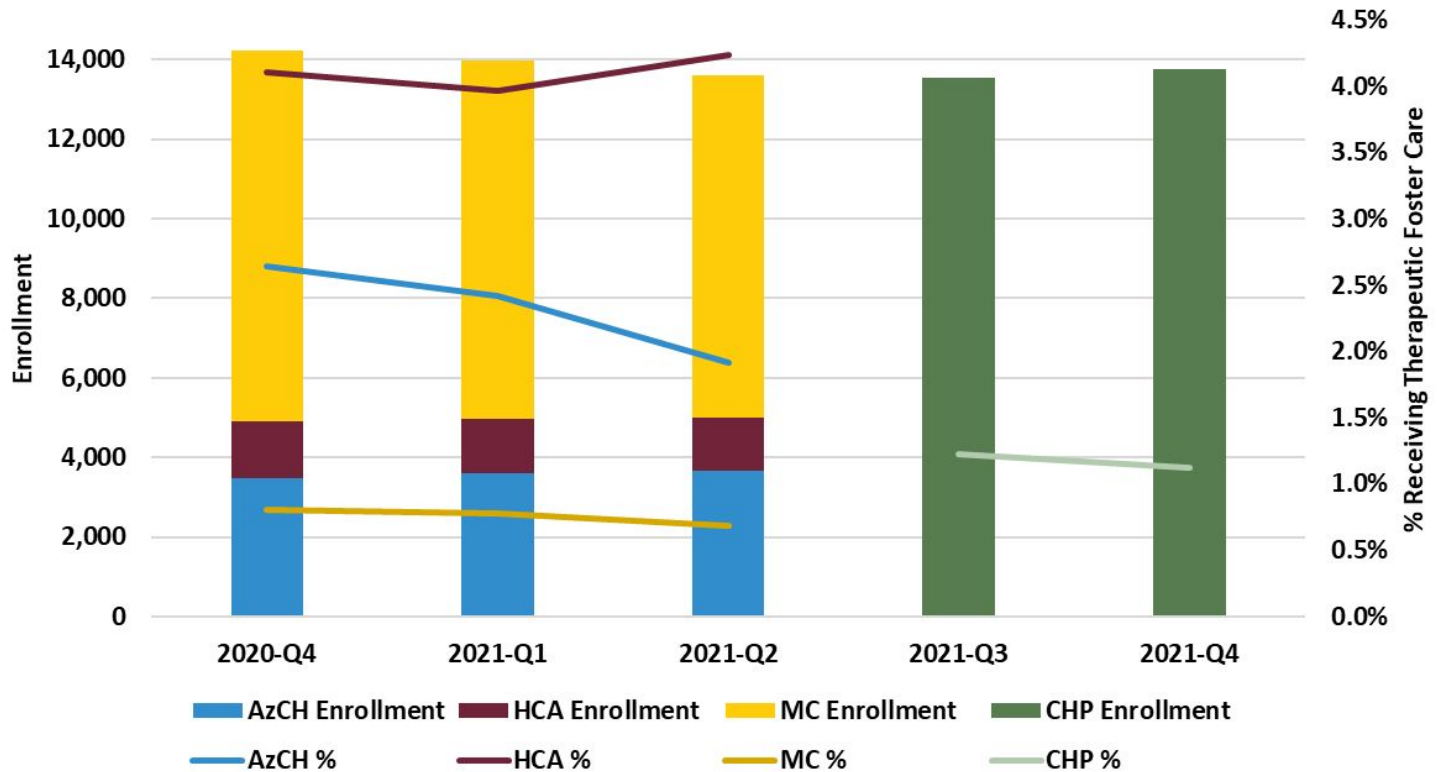
TFC Utilization by Avg. Length of Stay – AHCCCS Calculated

Preliminary¹



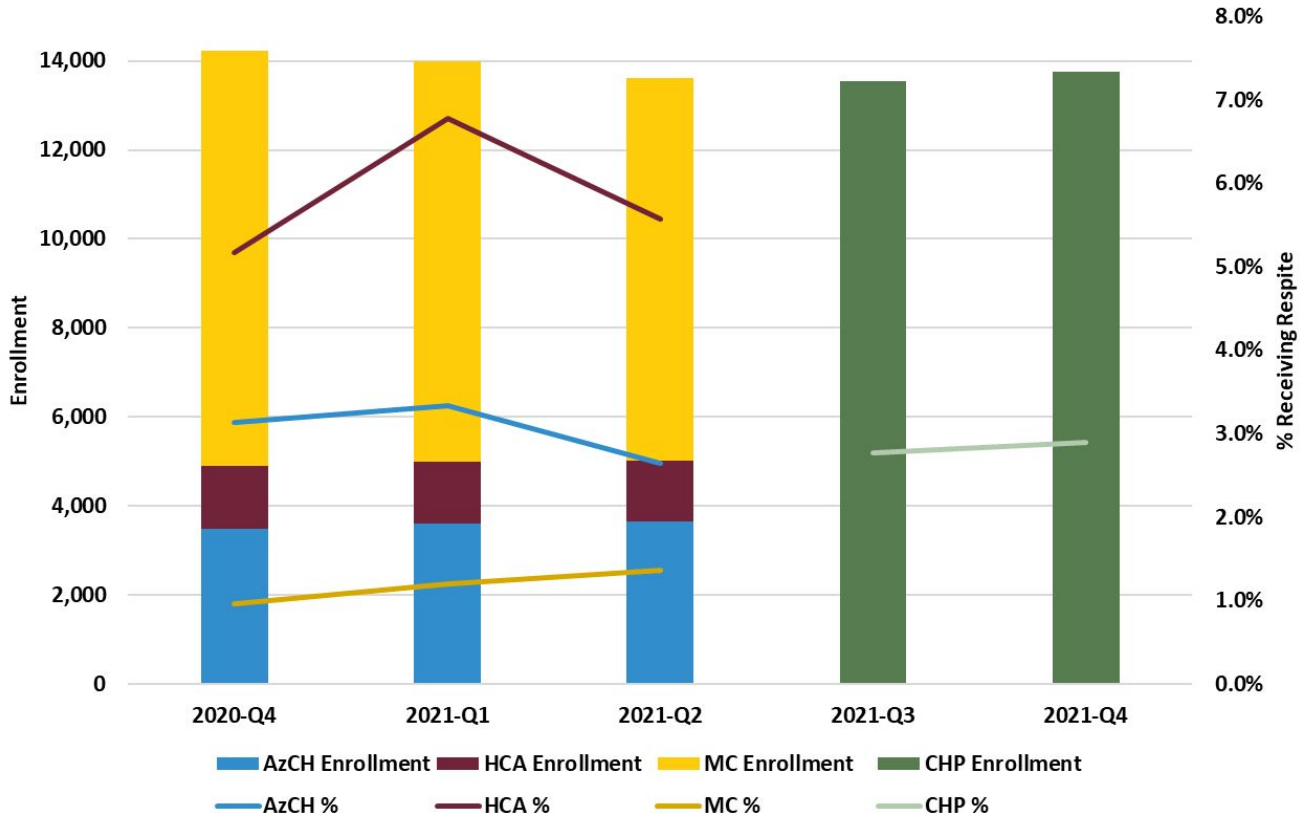
¹The previous three health plans (AzCH, HCA, MC) have been aggregated from previously reported quarters. The methodology and the data source remain unchanged.

TFC Utilization – AHCCCS Calculated¹



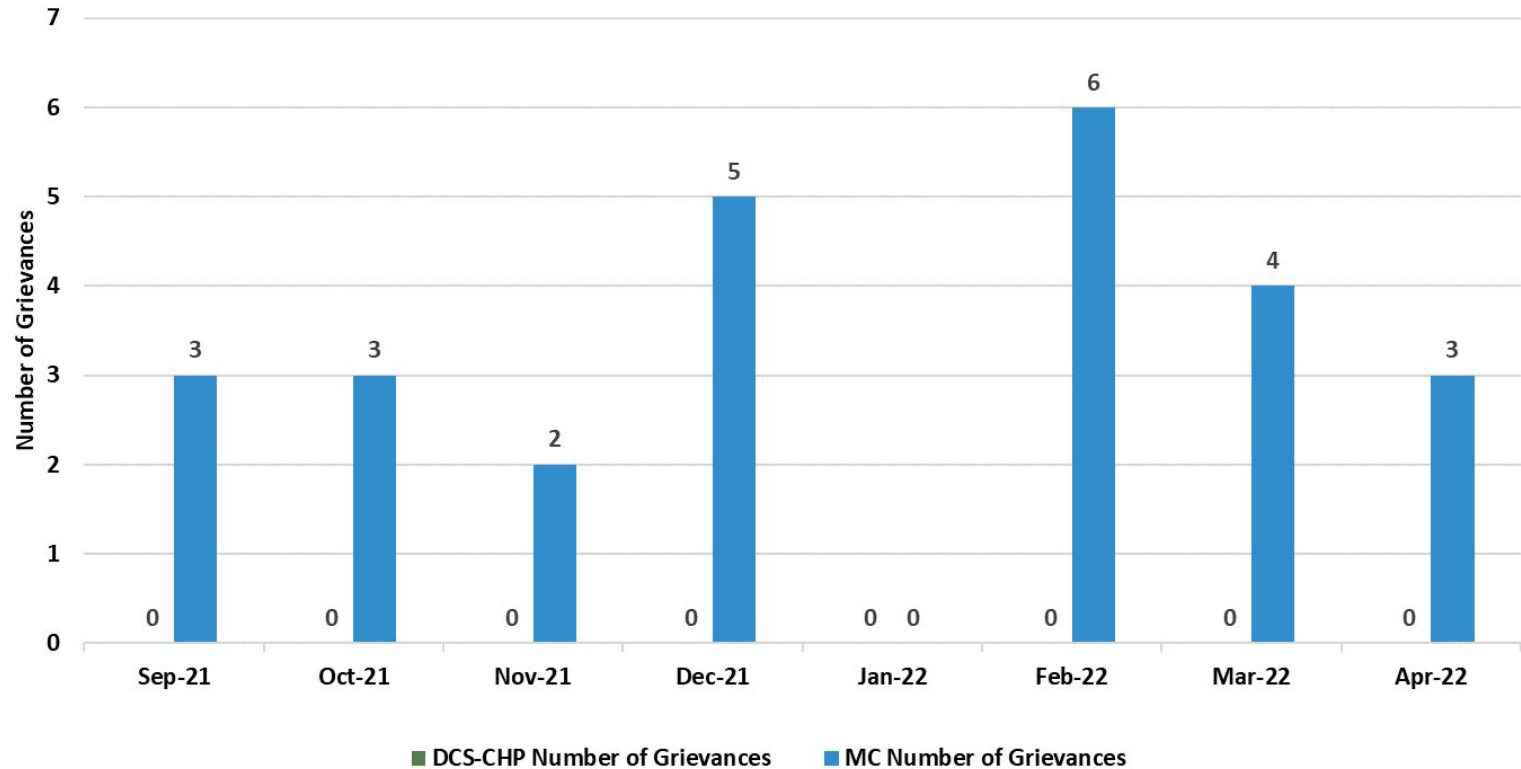
¹The previous three health plans (AzCH, HCA, MC) have been aggregated from previously reported quarters. The methodology and the data source remain unchanged.

Respite Utilization – AHCCCS Calculated¹



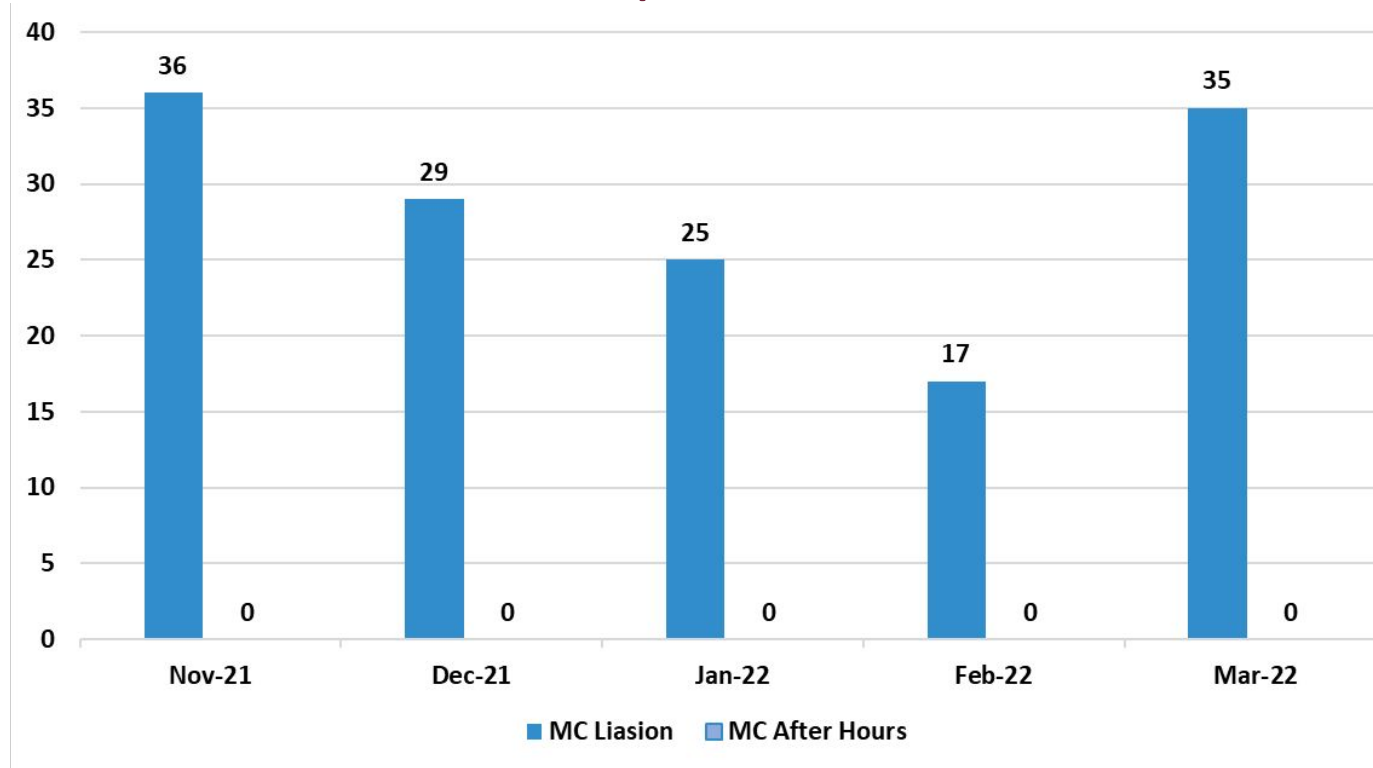
¹The previous three health plans (AzCH, HCA, MC) have been aggregated from previously reported quarters. The methodology and the data source remain unchanged.

Grievances – HP Self Reported¹



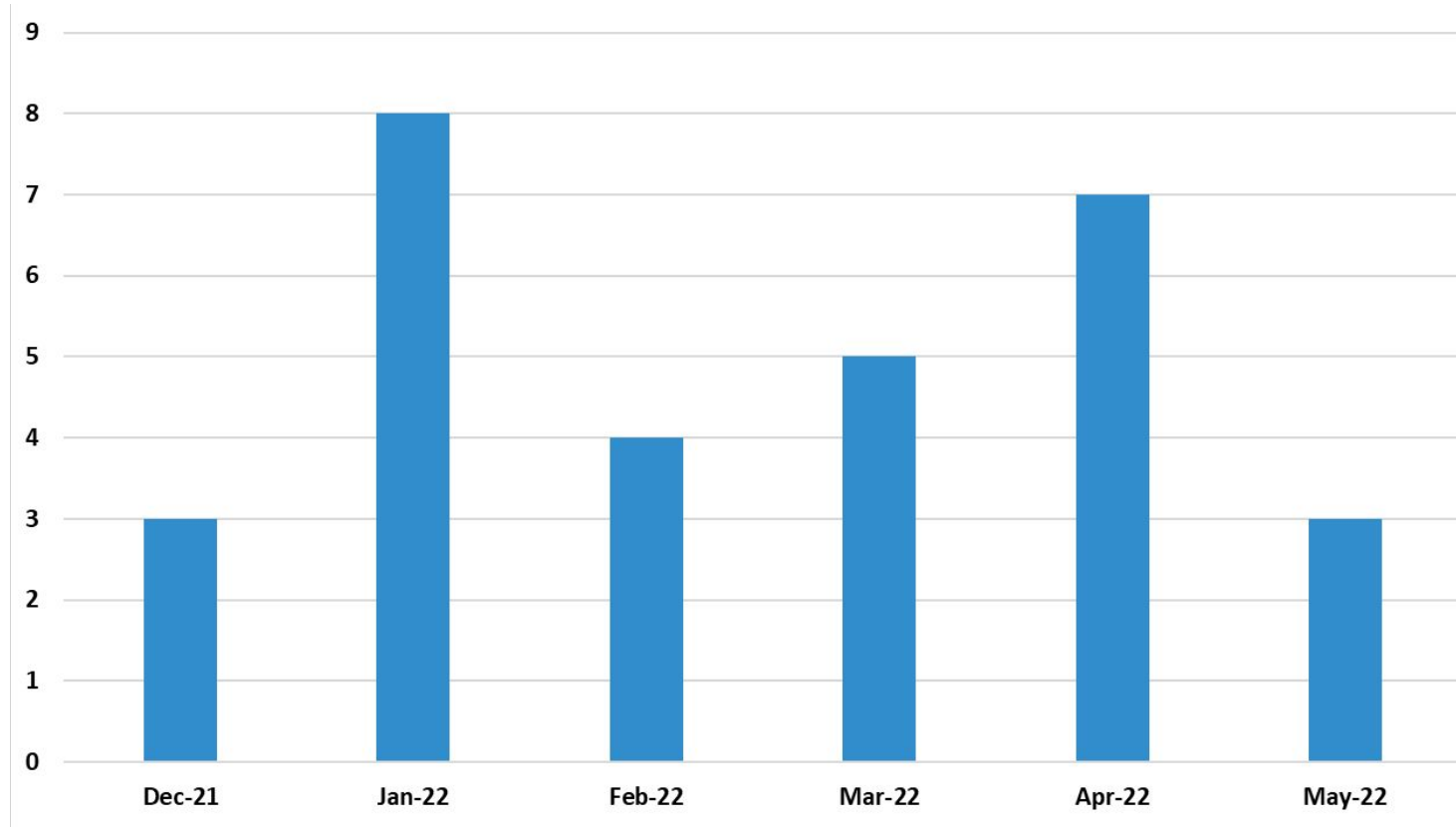
¹The three previous health plans (AzCH, HCA, MC) have been aggregated from previously reported quarters. The data sources for collecting the number of grievances is from The Arizona Department of Child Safety – Comprehensive Health Plan (DCS-CHP) and Mercy Care (a subcontractor of DCS-CHP).

ACOM 449 – Liaison and After-Hours Call Volume – HP Self Reported¹



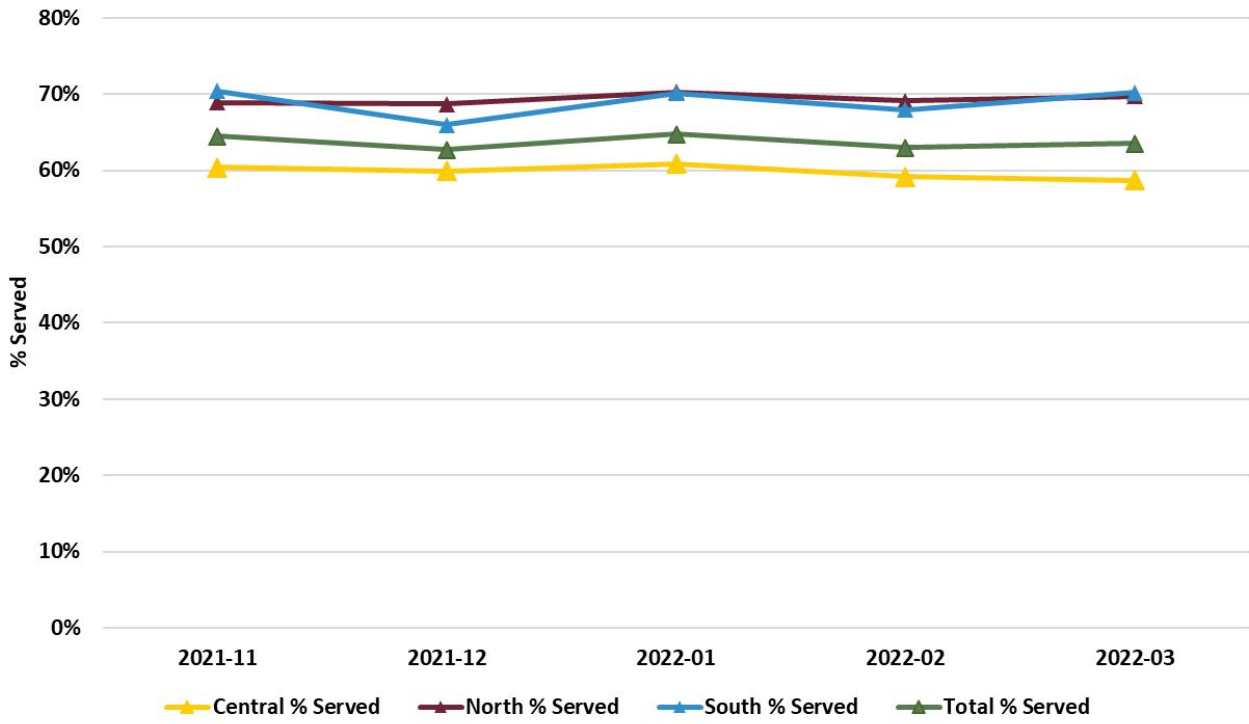
¹The methodology and the data source remain unchanged.

AHCCCS Clinical Resolutions – Jacob’s Law Call Volume¹



¹The methodology and the data source remain unchanged.

DCS-CHP Specific Enrolled/Served – Percentage Served – AHCCCS Calculated¹



¹The methodology and the data source remain unchanged.