



# AHCCCS Foster Care Leadership Meeting

6/26/2020

# Today's Agenda

- AHCCCS Update
  - Therapeutic Foster Care 320-W Policy
  - ACOM 449 – Jacob's Law Standard Criteria
  - SOCPR Update
  - OIFA Update
- DCS Update
  - Integration Update
  - Shelter Tracking Update
  - Families First Act Update
- RHBA Update
- Data Presentation

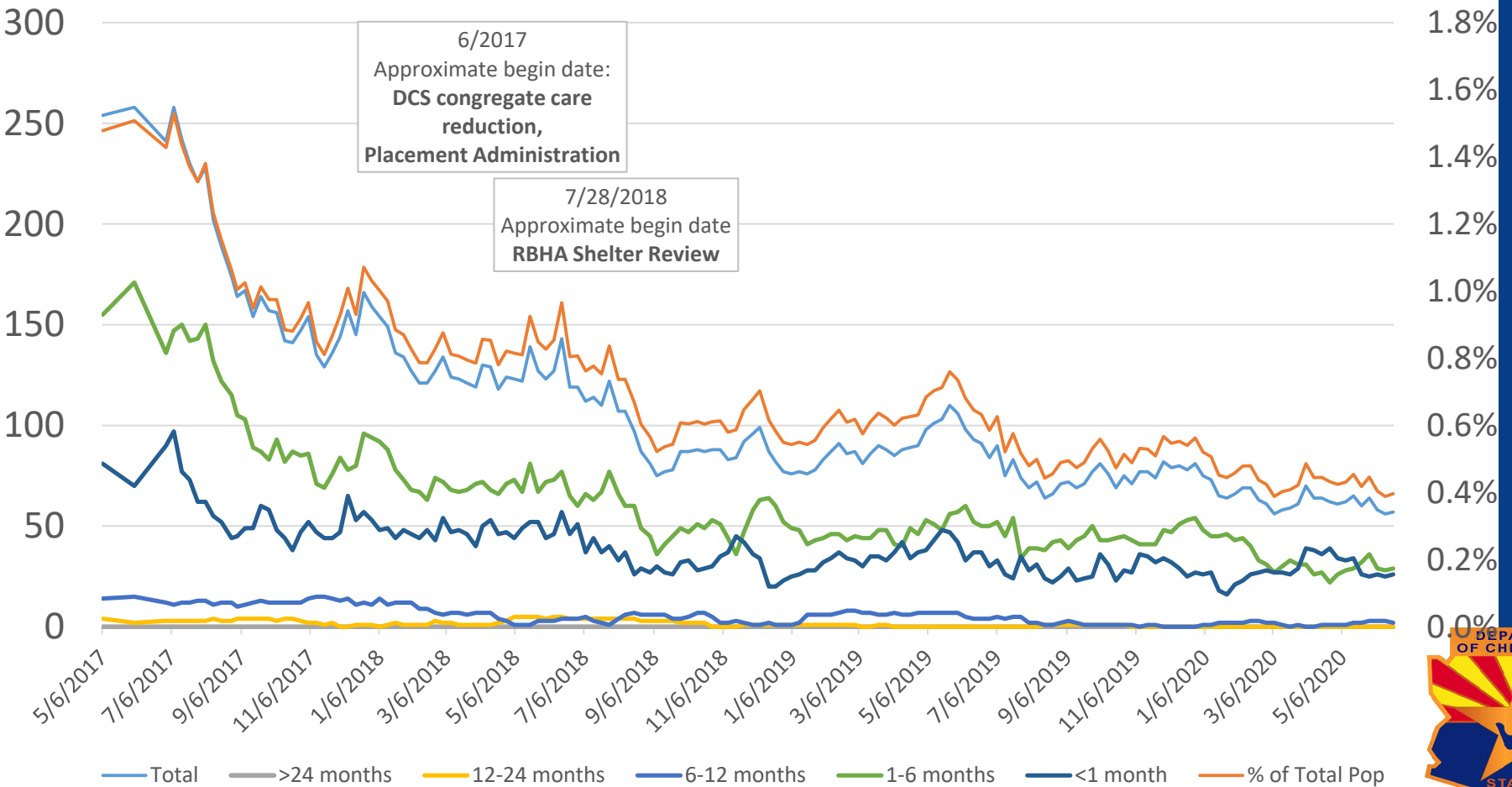
# AHCCCS Update

- Therapeutic Foster Care 320-W Policy
- ACOM 449 – Jacob’s Law Standard Criteria
- SOCPR Update
- OIFA Update

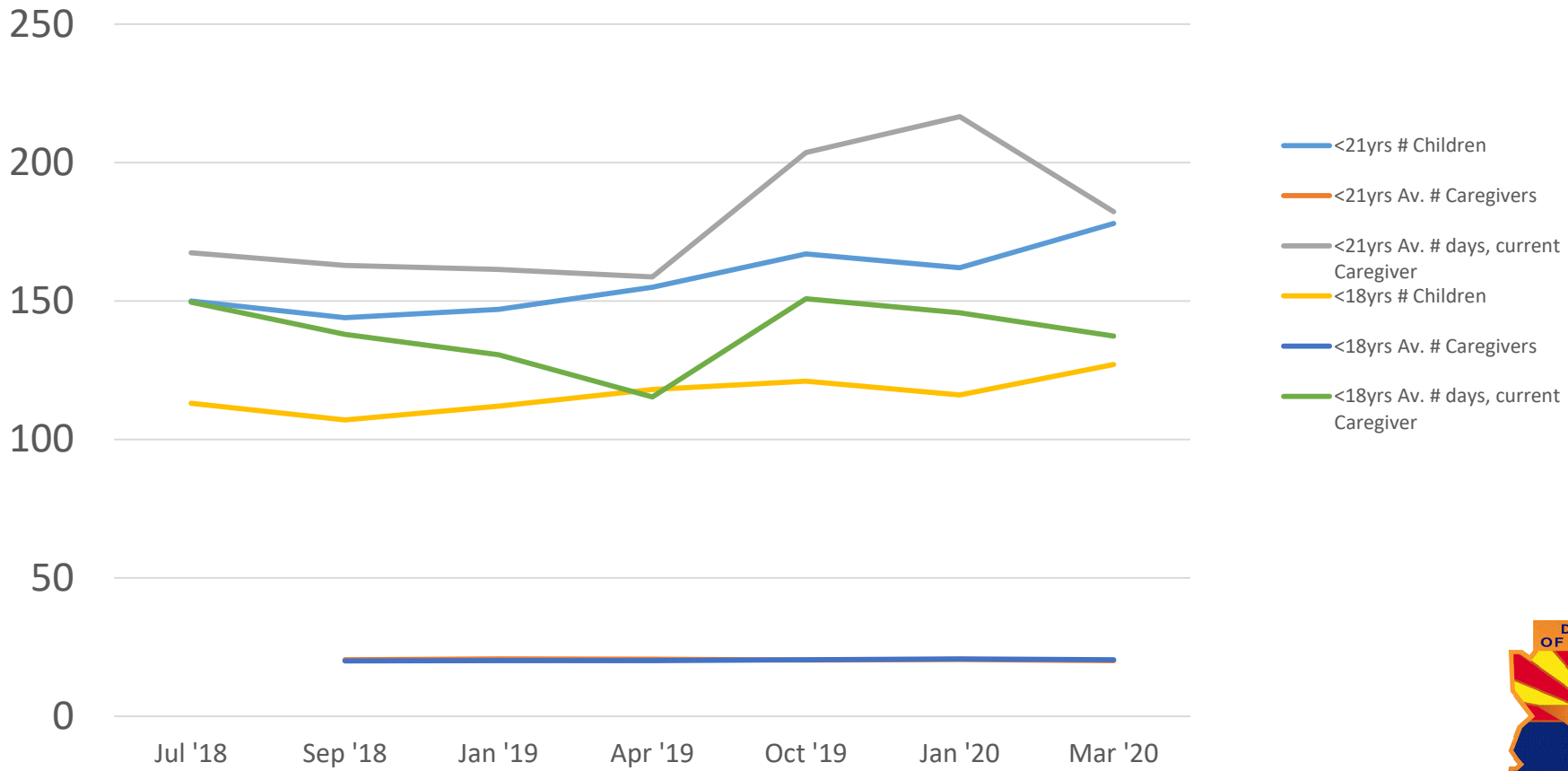
# DCS Update

- Integration Update
- Families First Act Update
- On-boarding Calls
- QOC Concerns
- Shelter Tracking Update

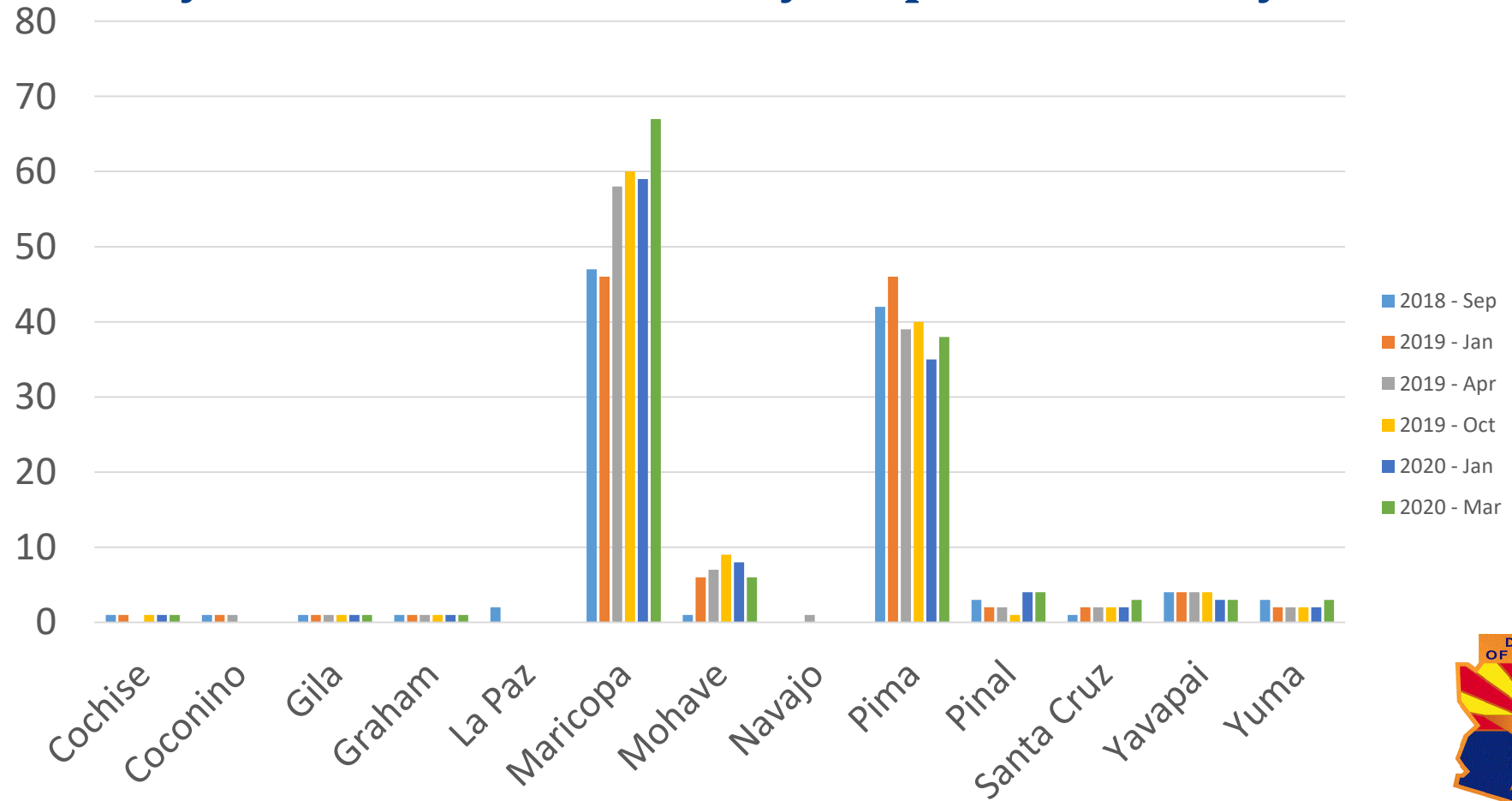
# Reduction of Children in Shelter Care



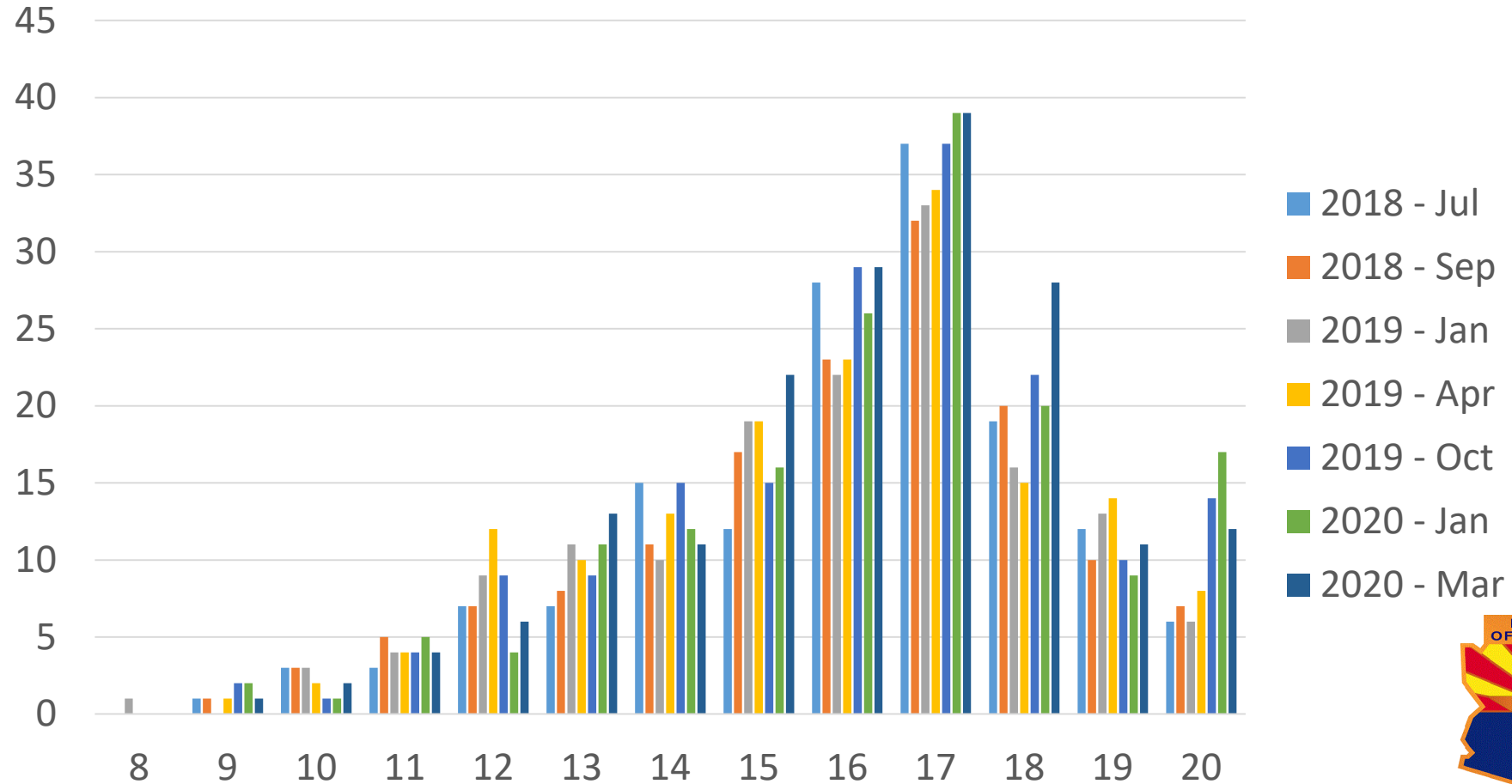
# ADCS Placement & RBHA Coordination



# <18yr olds, 15+ Placements by Responsible County

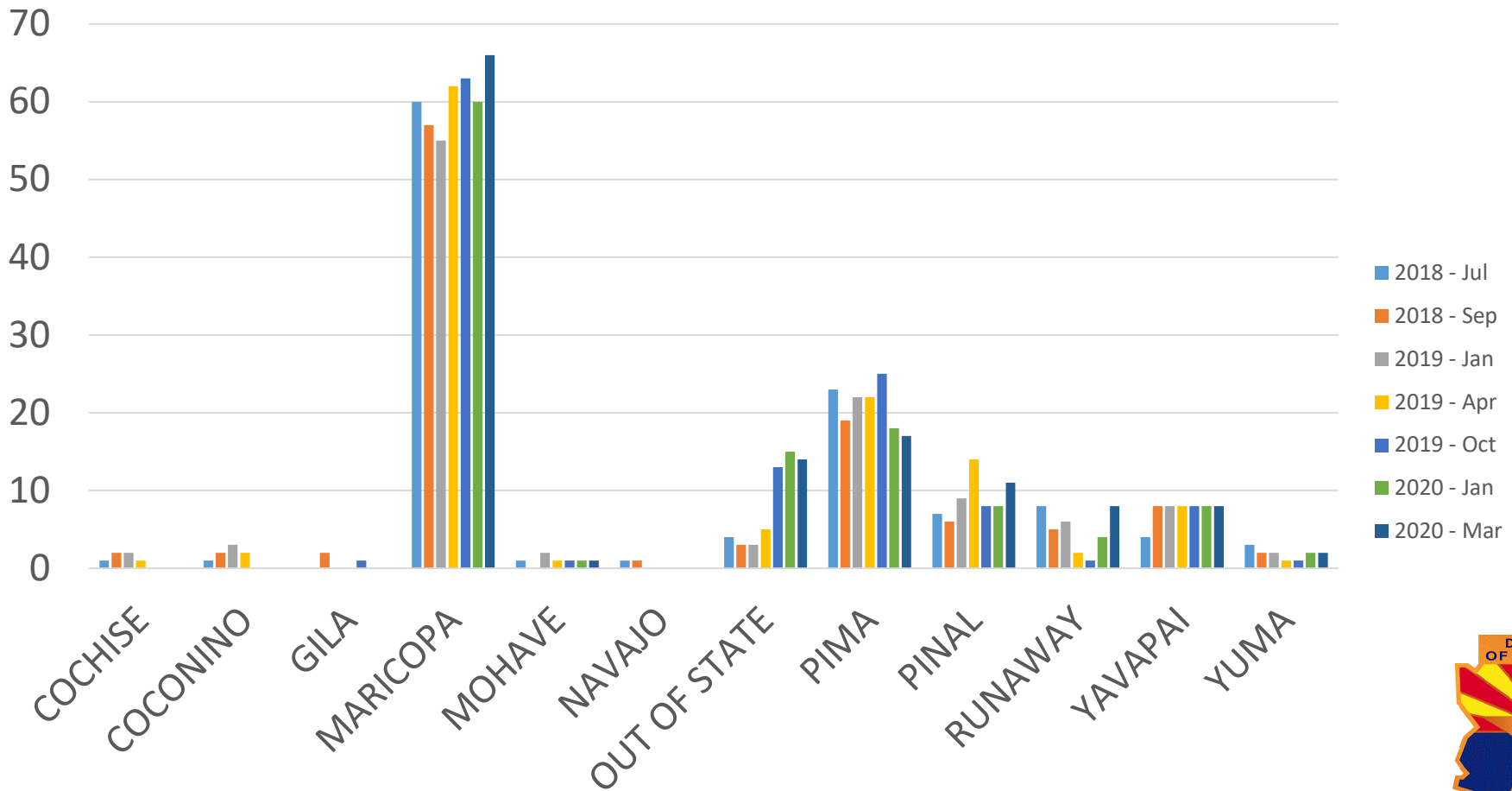


# <21yrs old 15+ Placements Clustered by Age





# <18yr olds 15+ Placements by Caregiver County



# RBHA Update

- Jacob's Law Committees
- Children's Liaison Point of Contacts Distribution



# Data Dashboard

Lauren Prole, Clinical Project Manager, OOD  
Will Buckley, Clinical Analyst, DHCM

Dashboard Measure	Source	Occurrence
CMDP Enrollment and Shelter Status	<a href="#">DCS Monthly Operational Outcomes Report</a>	Monthly
CMDP Enrolled/Served & Enrollment	BH Utilization and Timeframes Del. - HP Self Reported	Quarterly
Crisis	BH Utilization and Timeframes Del. - HP Self Reported	Quarterly
Rapid Response	BH Utilization and Timeframes Del. - HP Self Reported	Quarterly
Therapeutic Foster Care	BH Utilization and Timeframes Del. - HP Self Reported	Quarterly
Respite	BH Utilization and Timeframes Del. - HP Self Reported	Quarterly
Grievances	BH Utilization and Timeframes Del. - HP Self Reported	Quarterly
AHCCCS Jacob's Law Call Volume	AHCCCS Clinical Resolution Unit	Monthly
Jacob's Law HP Liaison and After Hours Communication	ACOM449 Deliverable - HP Self Reported	Monthly
Jacob's Law Access to Services	ACOM449 Deliverable - HP Self Reported	Quarterly
Newly Enrolled CMDP Members	AHCCCS Data Warehouse*	Monthly
CMDP Enrolled Served – Percentage Served	AHCCCS Data Warehouse*	Monthly
Shelter Status & High Number of Placement	Standard Work Deliverable - HP Self Reported	Monthly
Performance Measures	HSAG Calculated for AHCCCS	Yearly

# DCS – Out of Home Foster Care Demographic Report

Out-Of-Home Population (by Child)	FY 15	FY 16	FY 17	FY18	FY19	FY20 YTD
Total in Out-of-Home Care	17,264	17,390	15,803	13,651	13,331	13,261
AGE RANGE						
0-12 months	1,467	1,472	1,365	1,152	1,233	1,290
1 years	1,598	1,570	1,342	1,183	1,187	1,213
2-3 years	2,408	2,510	2,148	1,821	1,782	1,796
4-5 years	2,010	2,009	1,823	1,562	1,510	1,545
6-8 years	2,968	2,825	2,406	1,980	1,882	1,845
9-12 years	2,887	3,088	3,003	2,511	2,335	2,236
13-17 years	3,926	3,916	3,716	3,442	3,402	3,336

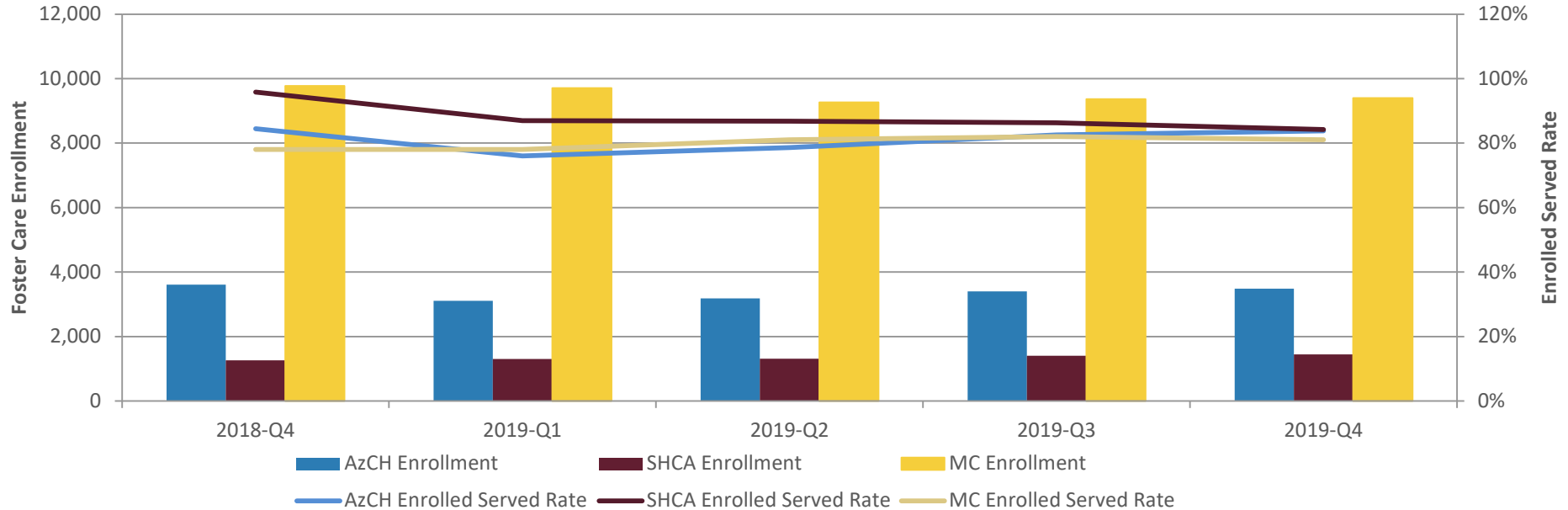
# Youth in Out of Home Care, Placed in Shelter

Out-Of-Home Population (by Child)	FY 15	FY 16	FY 17	FY18	FY19	FY20 YTD
Congregate Care - Shelter Care	353	359	235	114	90	66

# Timeframe

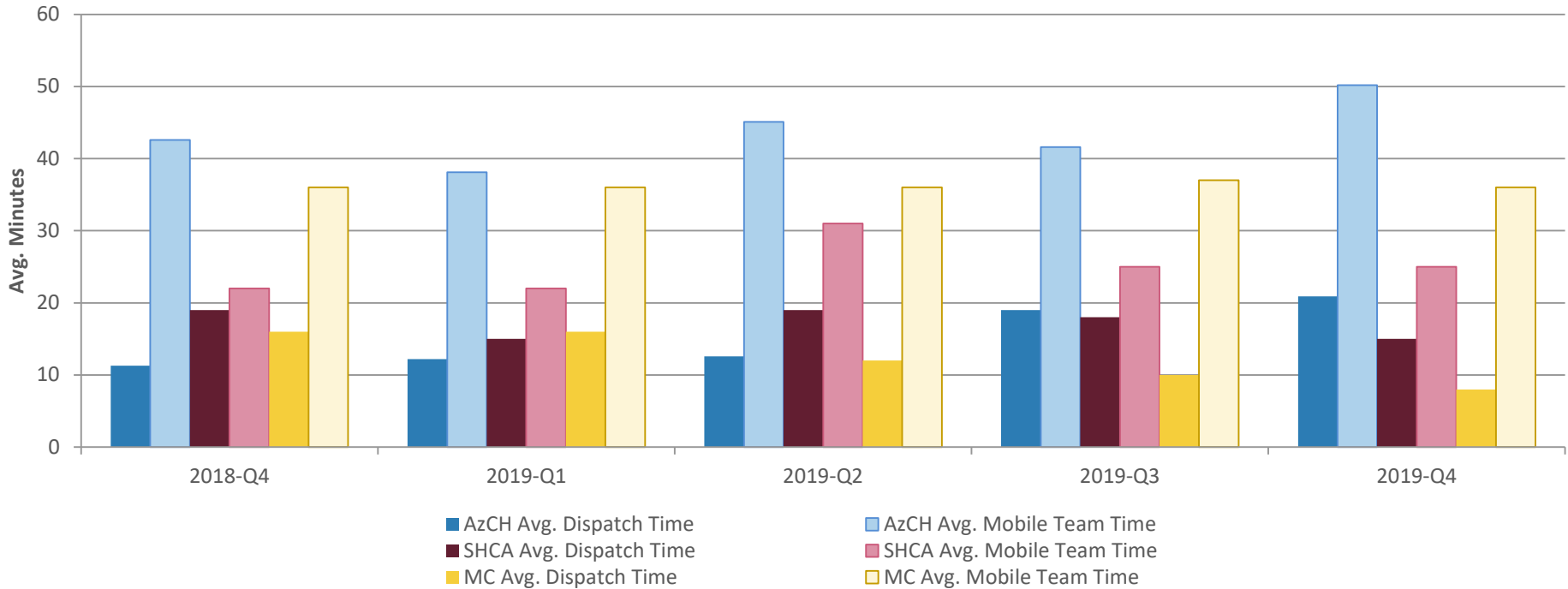
Quarter	Date
2018-Q4	7/1/2018 – 9/30/2018
2019-Q1	10/1/2018 – 12/31/2018
2019-Q2	1/1/2019 – 3/31/2019
2019-Q3	4/1/2019 – 6/30/2019
2019-Q4	7/1/2019 – 9/30/2019

# Enrolled Served – HP Self Reported



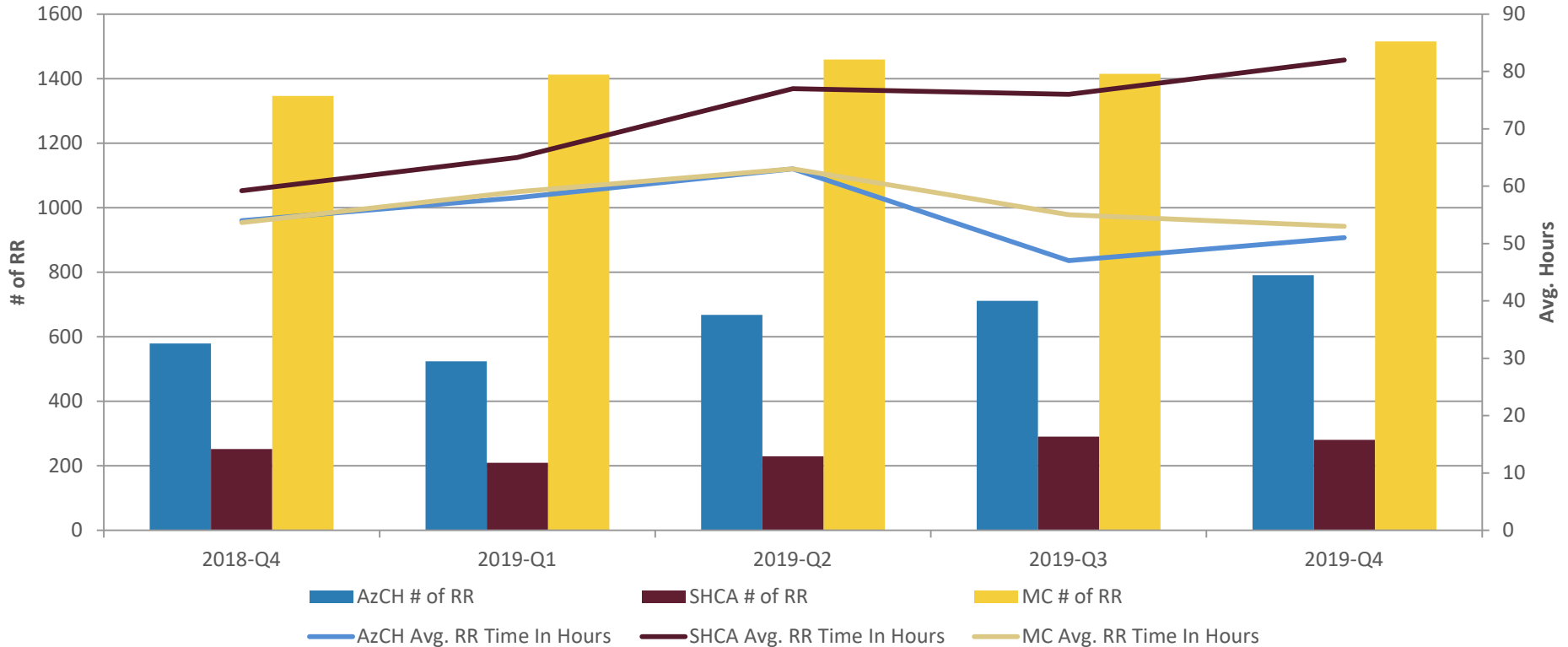


# Crisis Services – HP Self Reported

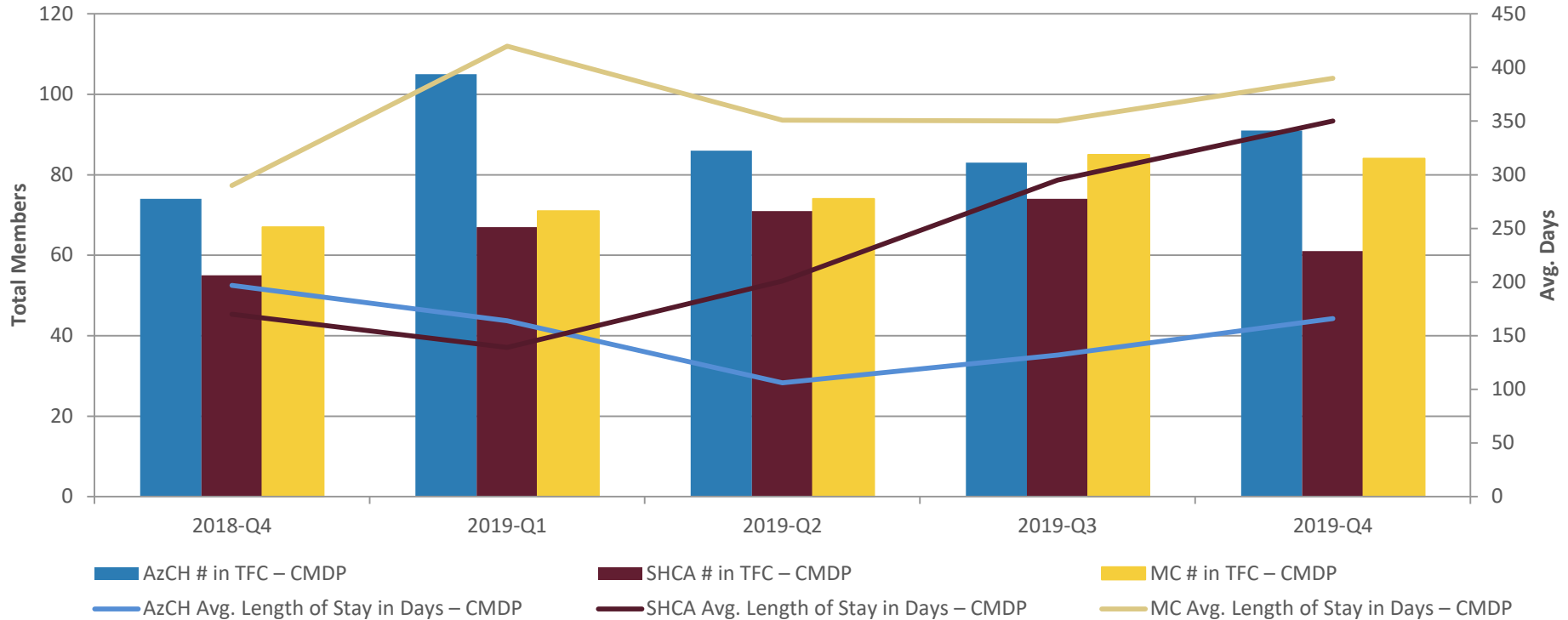


Definition:  
Dispatch –  
Mobile –

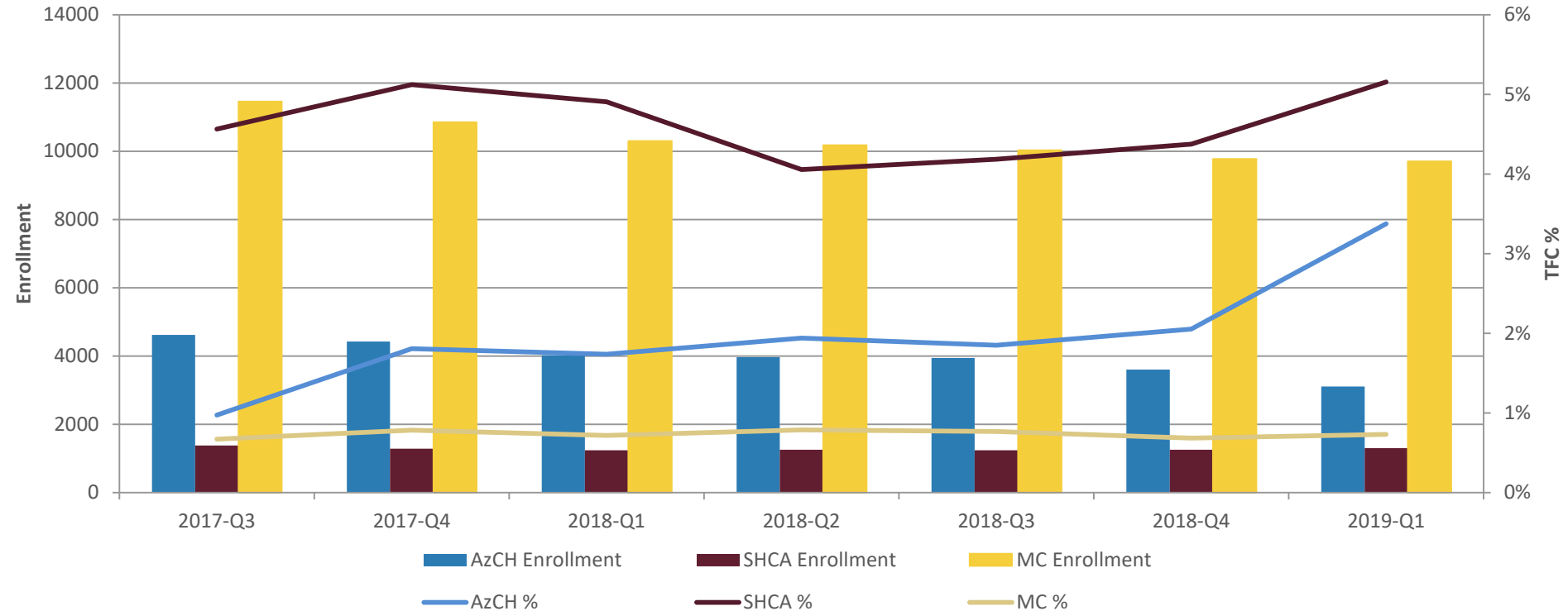
# Rapid Response – HP Self Reported (72 hour requirement)



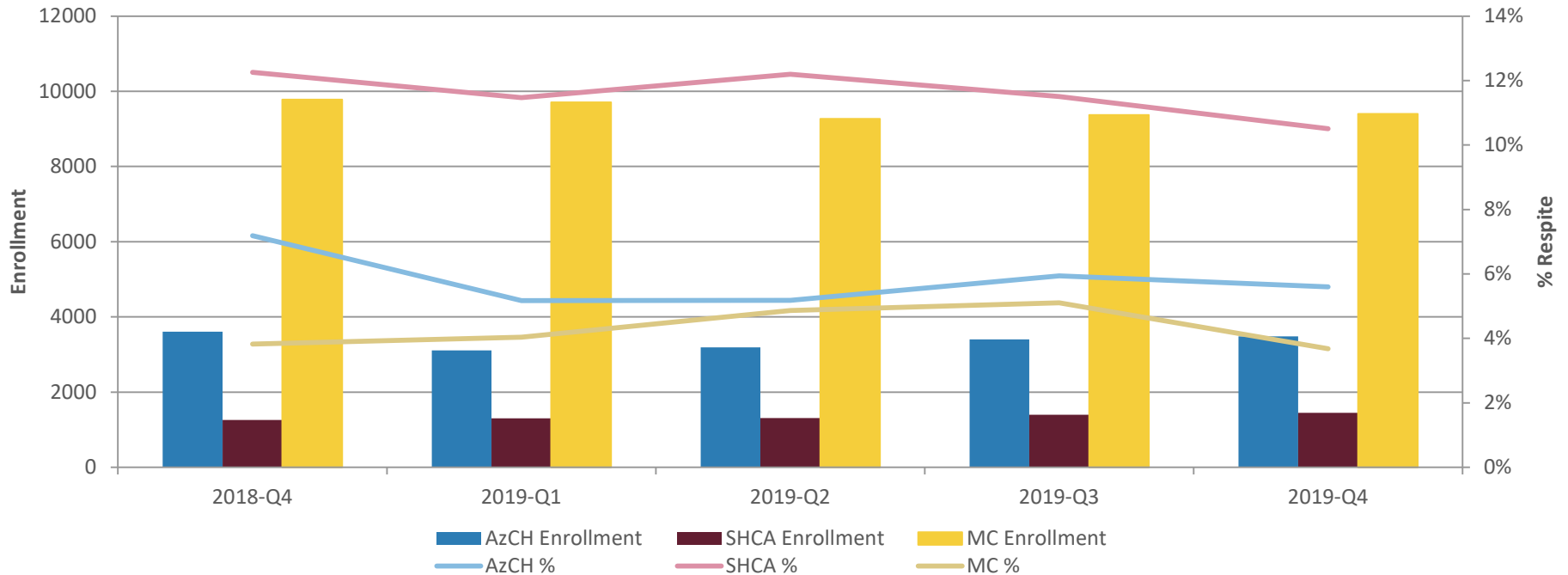
# TFC Utilization by Avg. Length of Stay – HP Self Reported



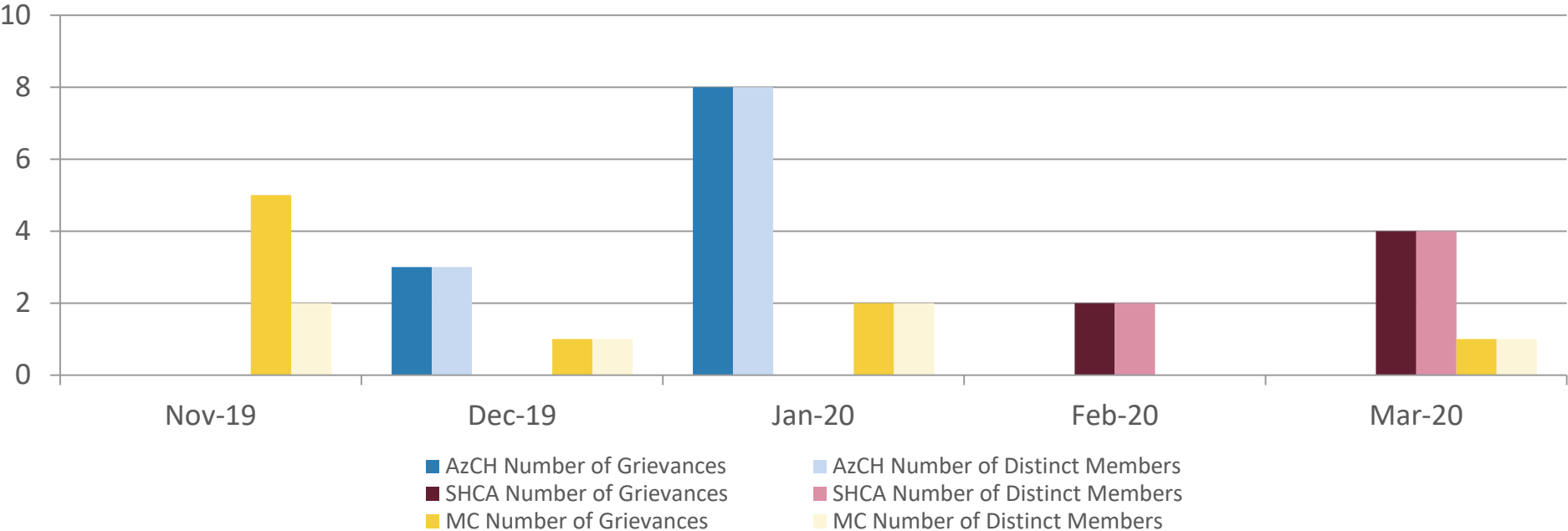
# TFC Utilization – HP Self Reported



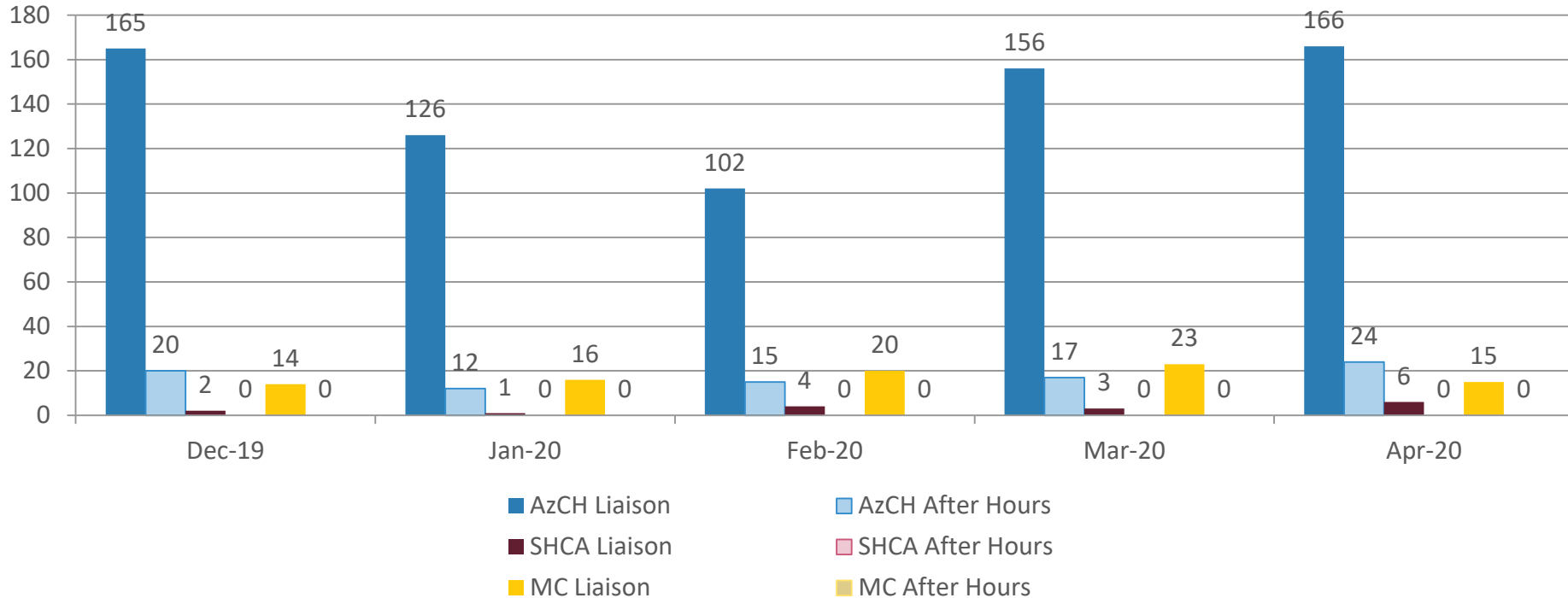
# Respite Utilization – HP Self Reported



# Grievances – HP Self Reported



# ACOM 449 – Liaison and After Hours Call Volume – HP Self Reported

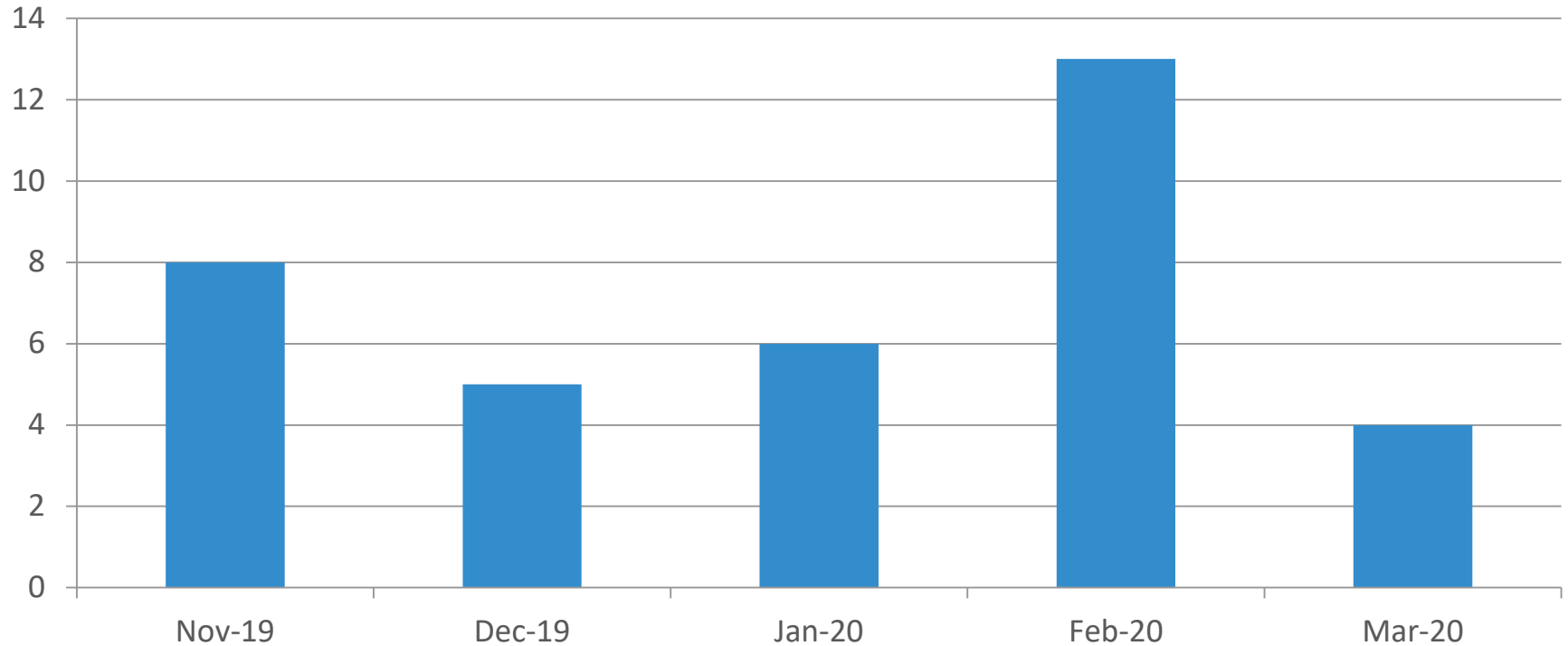


# ACOM 449 – Access to Services – HP Self Reported

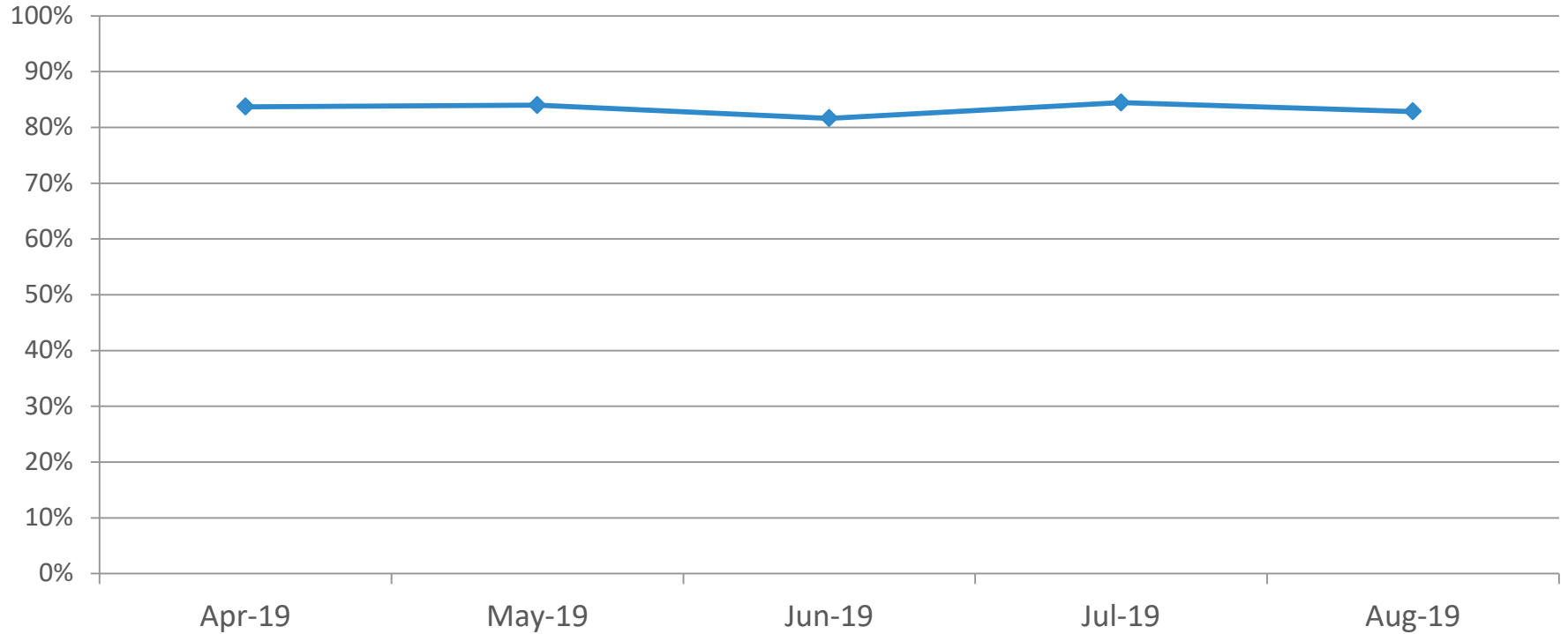
- Number of times the Contractor Coordinated Crisis Services because a Crisis Service Provider was Unresponsive within two hours – Zero from 12/1/2019 – 4/30/2020
- Number of times recommended and approved Behavioral Health Services were Accessed Directly by an Out-of-Home or Adoptive Parent that were Provided by a Non-Contracted Provider for 130% fee schedule – Zero from 12/1/2019 – 4/30/2020



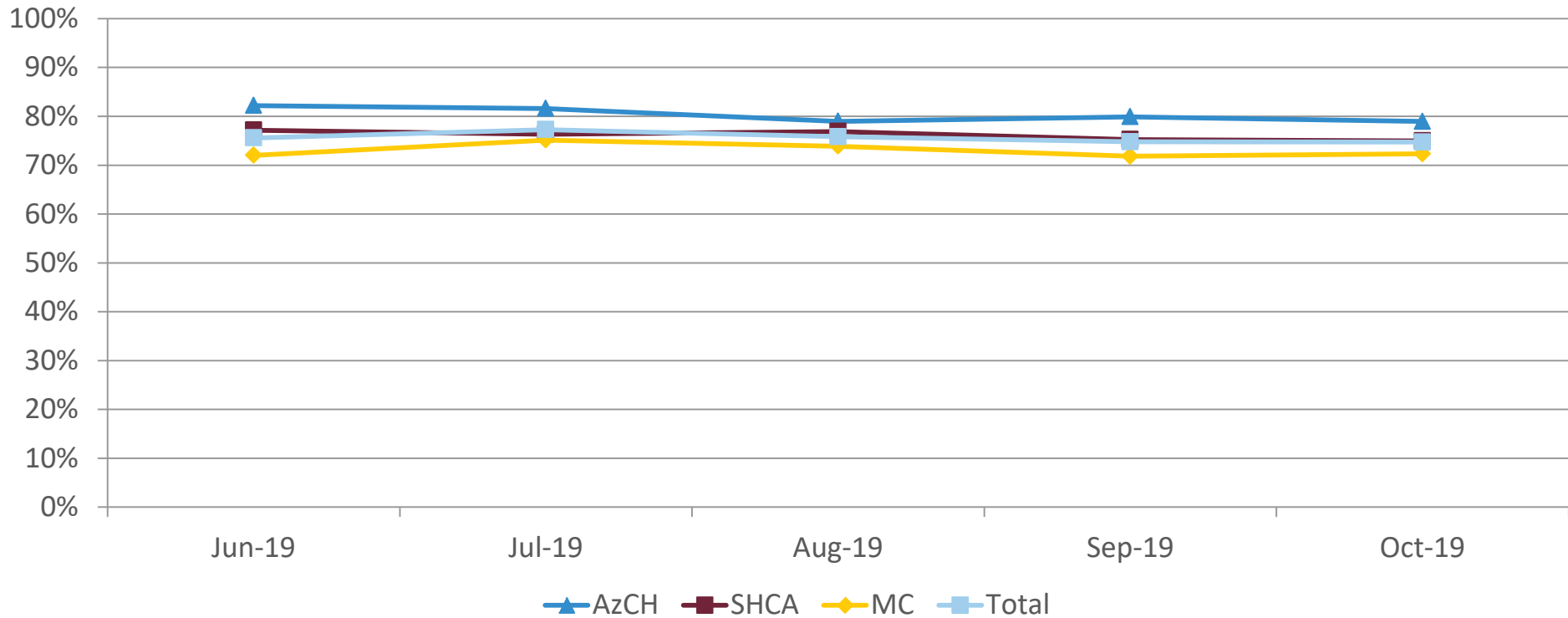
# AHCCCS Clinical Resolutions – Jacob’s Law Call Volume



# Newly Enrolled CMDP Members – Received services first 6 months of enrollment – AHCCCS Calculated



# CMDP Specific Enrolled/Served – Percentage Served – AHCCCS Calculated





# Performance Measures – HSAG Calculated

# 2018 GMHSU CMDP PMs

## CMDP

## GMHSU CMDP

	NCQA Medicaid					
	Mean 2018	CYE 2017 Rate	CYE 2018 Rate	CYE 2017 Rate	CYE 2018 Rate	
7 Day Follow-Up After Hospitalization for Mental Illness <sup>4</sup>	35.8%	NA	NA	63.4%	66.5%	
30 Day Follow-Up After Hospitalization for Mental Illness <sup>4</sup>	56.8%	NA	NA	82.8%	84.0%	
Mental Health Utilization - Inpatient (Total)	NA	NA	NA	3.5%	4.7%	
Mental Health Utilization - Intensive Outpatient/Partial Hospitalization (Total)	NA	NA	NA	1.6%	1.5%	
Mental Health Utilization - Any Service (Total)	NA	NA	NA	51.9%	64.1%	
Mental Health Utilization - Outpatient (Total)*	NA	NA	NA	51.4%	63.6%	
Mental Health Utilization - ED (Total)*	NA	NA	NA	NA	0.0%	
Mental Health Utilization - Telehealth (Total)	NA	NA	NA	NA	2.7%	
Use of Multiple Concurrent Antipsychotics in Children and Adolescents <sup>1,2,4</sup>	2.4%	0.0%	1.6%	0.2%	0.2%	
Metabolic Monitoring for Children and Adolescents on Antipsychotics <sup>2,4</sup>	35.3%	NA	NA	33.2%	35.4%	
Use of First-Line Psychosocial Care for Children and Adolescents on Antipsychotics <sup>4</sup>	57.6%	NA	NA	86.6%	89.6%	

**Please Note:**

NA - A rate was not measured for the specific reporting period

NC - Reported for Informational Purposes Only, Not in CYE 2016 Contract

\* Measure rates adjusted to account for methodology change

Prior to CYE 2017 Mental Health Utilization Outpatient and ED were combined into one submeasure. Beginning in CYE 2017 this measure was separated into two submeasures

<sup>1</sup> Lower rate indicates better performance

<sup>2</sup> CYE 2018 Acute cross line of business rates are available. Please refer to the Cross LOB tab

<sup>3</sup> CYE 2018 SMI cross line of business rates included within this tab; however, cross line of business methodology was utilized only for historical data

<sup>4</sup> CYE 2018 GMH/SU cross line of business rates are available. Please refer to the Cross LOB tab. Follow Up After Hospitalization measures utilize cross line of business methodology for exclusions only

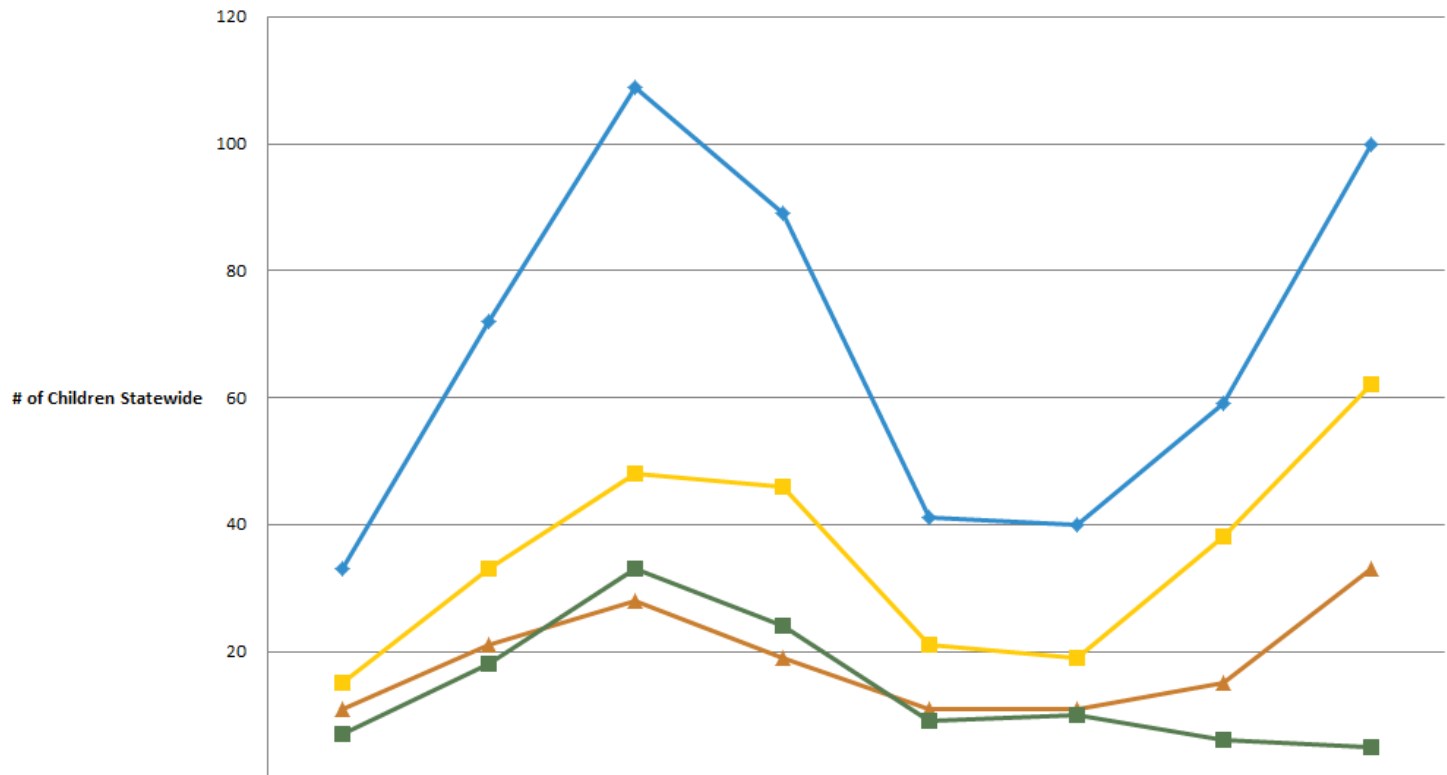
# 2018 CMDP PMs

	NCQA Medicaid	CMDP	
	Mean 2018	CYE 2017 Rate	CYE 2018 Rate
Children's Access to Care (12-24 mo.)	94.8%	97.9%	97.7%
Children's Access to Care (25 mo. - 6 yrs.)	86.3%	91.8%	92.9%
Children's Access to Care (7 - 11 yrs.)	90.0%	96.8%	96.2%
Children's Access to Care (12 - 19 yrs.)	88.8%	97.1%	96.4%
Well Child Visit (6+ by 15 mo. of age)	62.8%	44.6%	NA
Well Child Visits (3-6 years of age)	72.1%	74.5%	72.6%
Adolescent Well Care Visits	53.2%	72.3%	72.4%
Annual Dental Visits	55.9%	73.8%	75.4%
Asthma Medication Ratio (5-18 Years)	NA	NA	76.6%
Ambulatory Care: ED Visits (Total)	NA	41.8	43.1
Inpatient Utilization - General Hospital/Acute Care - Total Inpatient	NA	12.5	15.1
Inpatient Utilization - General Hospital/Acute Care - Maternity	NA	1.8	2.0
Inpatient Utilization - General Hospital/Acute Care - Surgery	NA	5.0	6.3
Inpatient Utilization - General Hospital/Acute Care - Medicine	NA	6.7	7.9
Use of Multiple Concurrent Antipsychotics in Children and Adolescents <sup>1,2,4</sup>	2.4%	0.0%	1.6%
Developmental Screening in the First Three Years of Life	NA	34.4%	37.7%
Chlamydia Screening in Women (Total)	58.1%	54.6%	54.6%
Dental Sealants for 6-9 Year Old Children at Elevated Caries Risk	NA	27.1%	27.1%

# Pediatric Out of State Utilization for RTC Level of Care Data Analysis and Discussion

Will Buckley, Clinical Analyst, DHCM

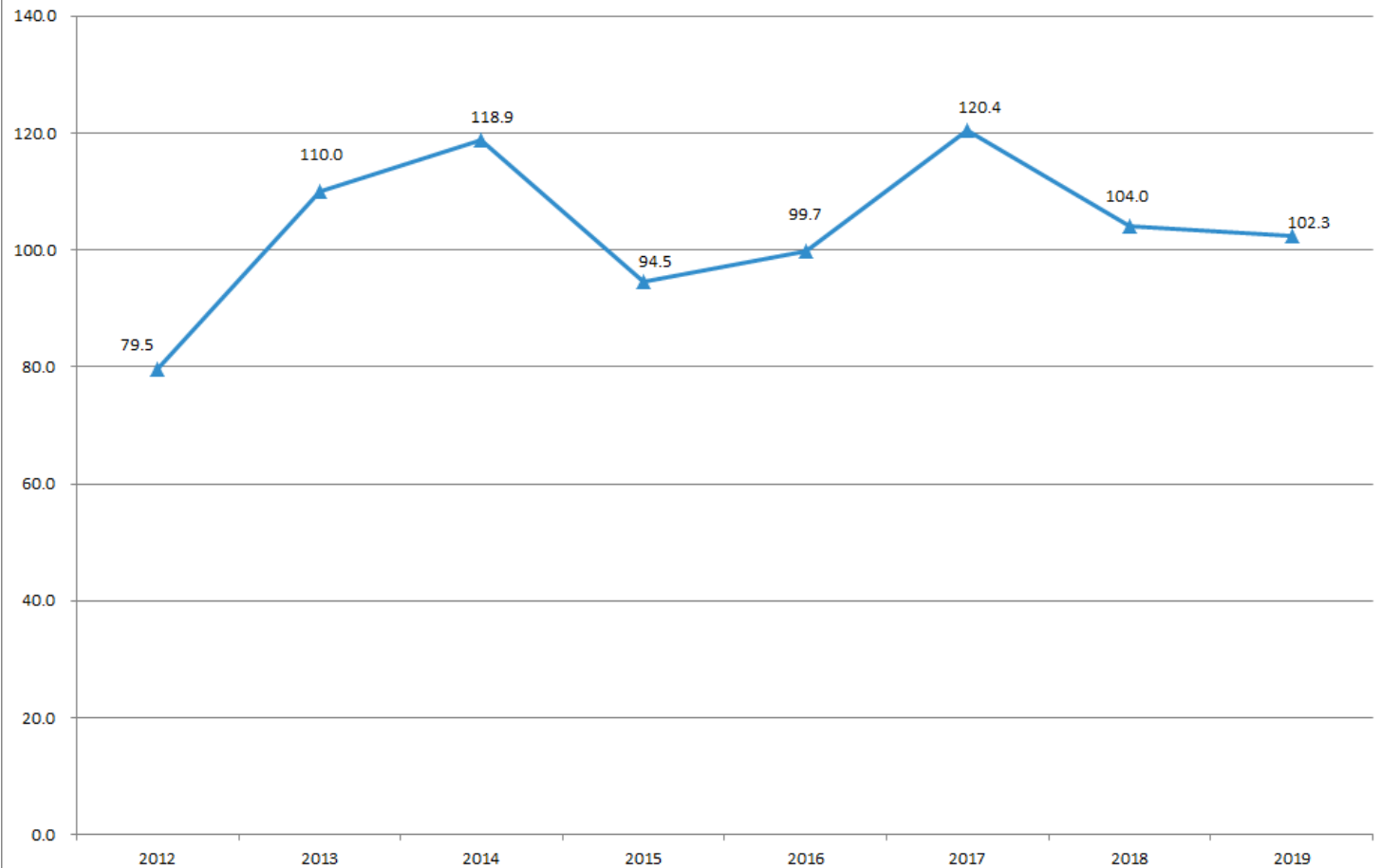
Out-of-State RTC Utilization by Unique Member Count Per Year (Under 21 on DOS)



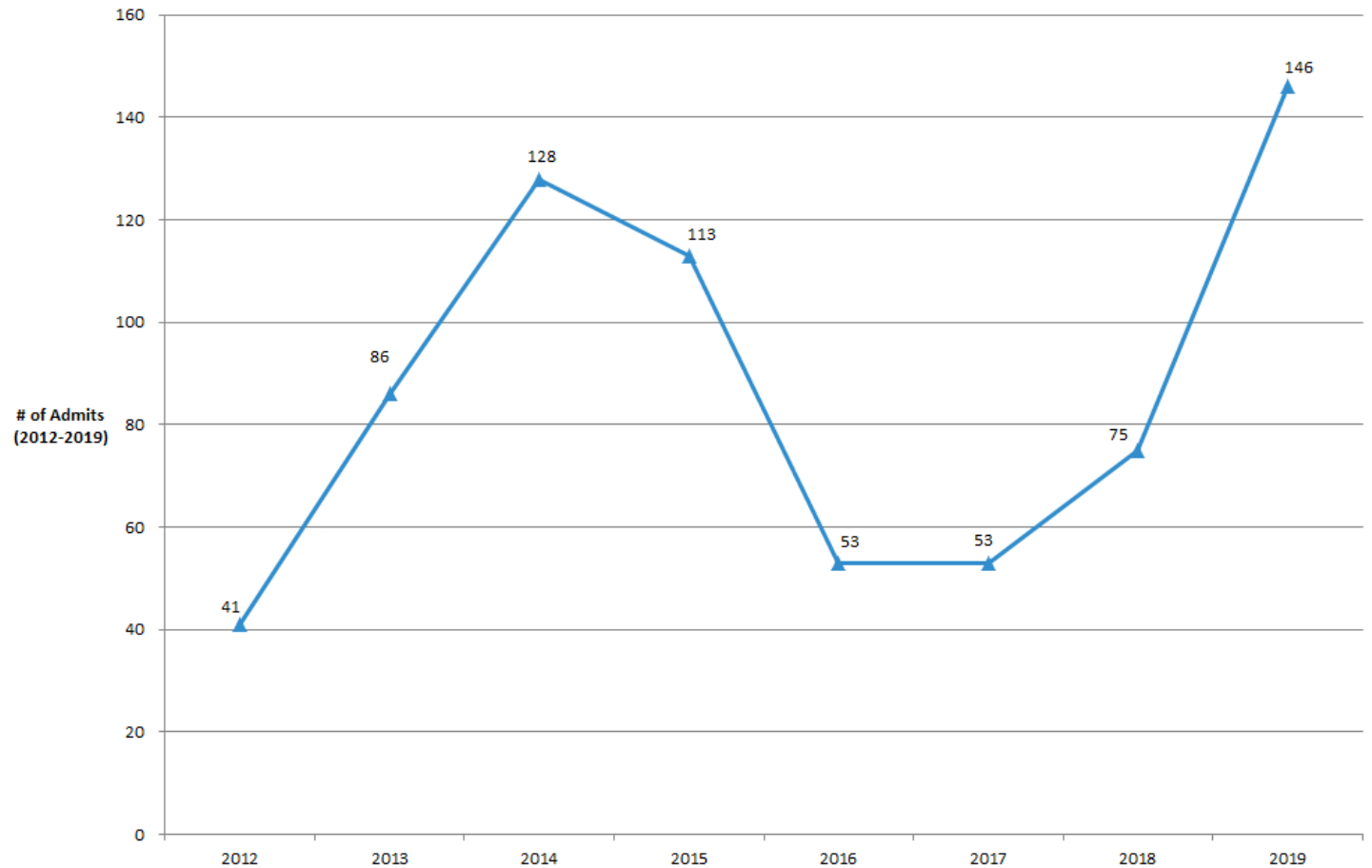
	2012	2013	2014	2015	2016	2017	2018	2019
CMDP	11	21	28	19	11	11	15	33
DD	7	18	33	24	9	10	6	5
All Other Health Plans	15	33	48	46	21	19	38	62
All Children	33	72	109	89	41	40	59	100



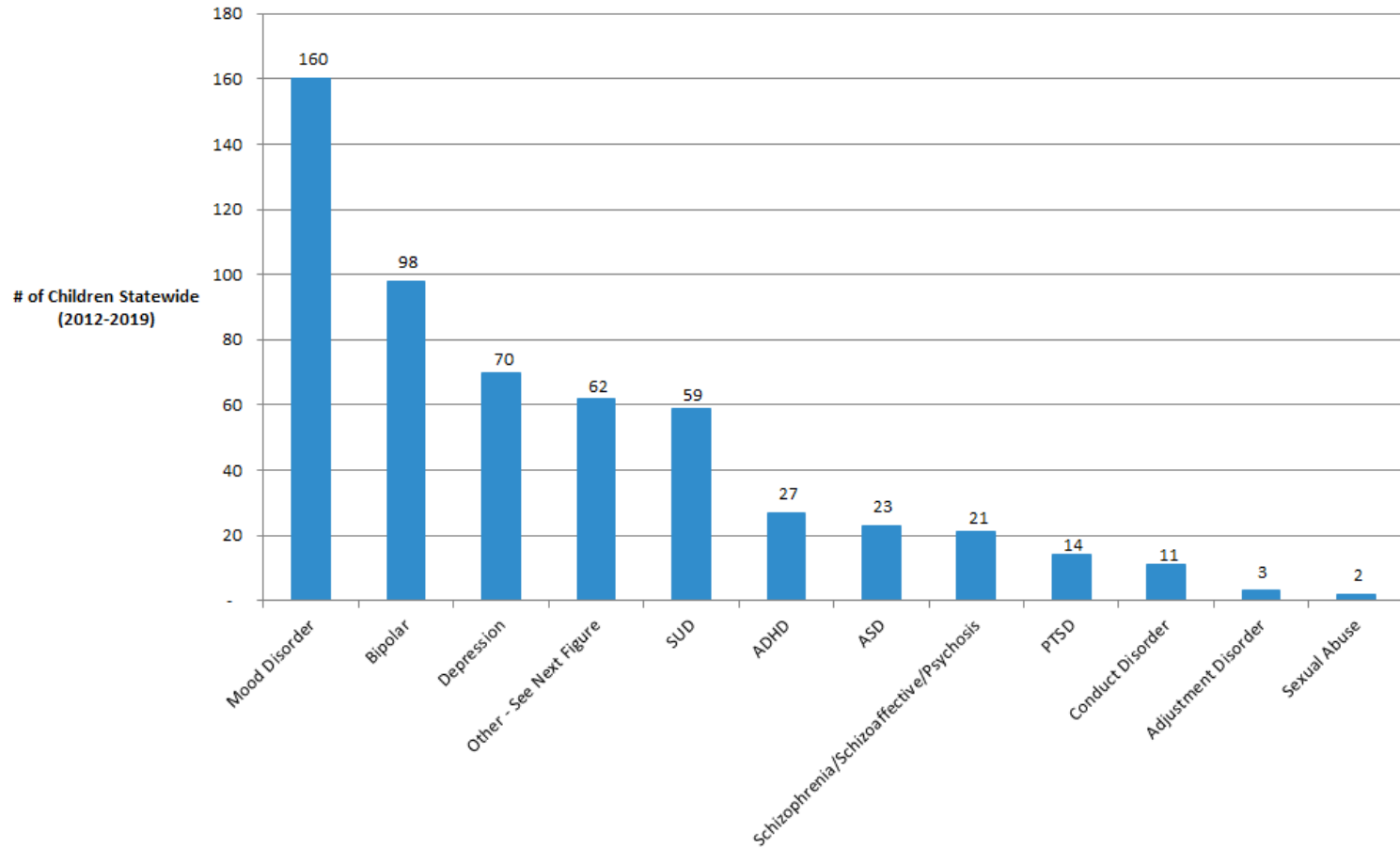
## Out-of-State RTC Utilization: Average Length of Stay (ALOS) by Year



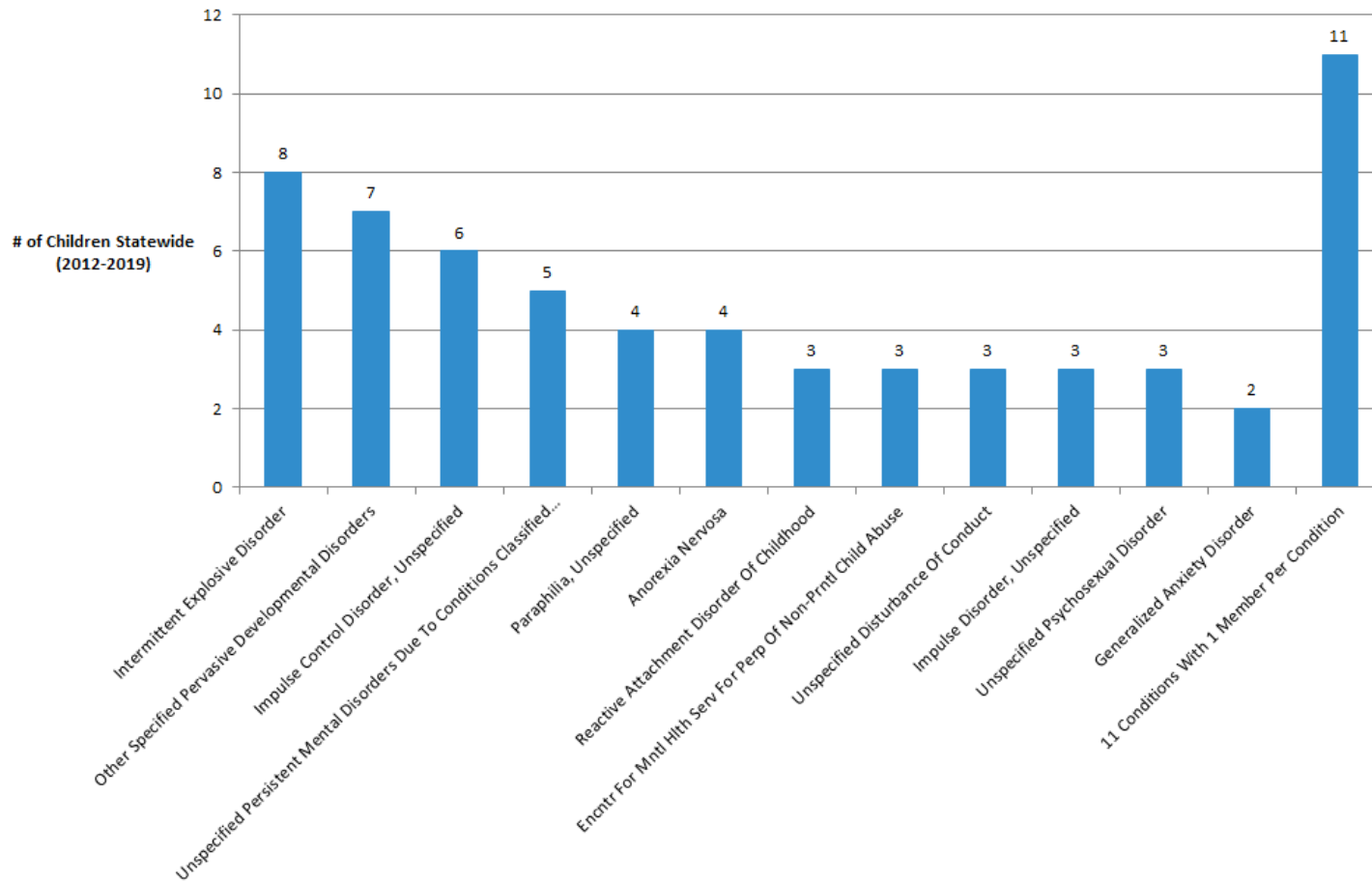
## Out-of-State RTC Utilization: Admits by Year



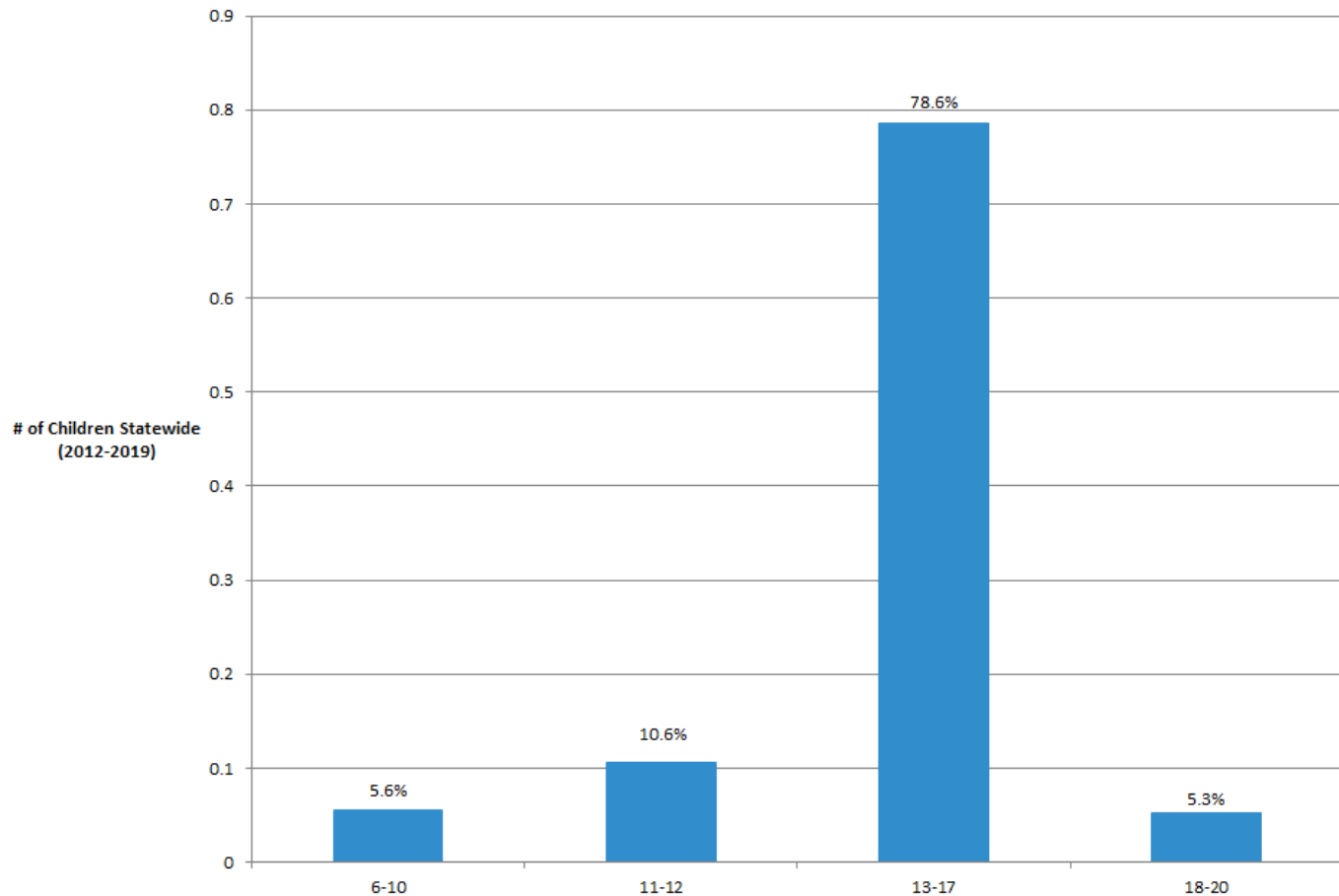
## Out-of-State RTC Utilization by Primary Diagnosis



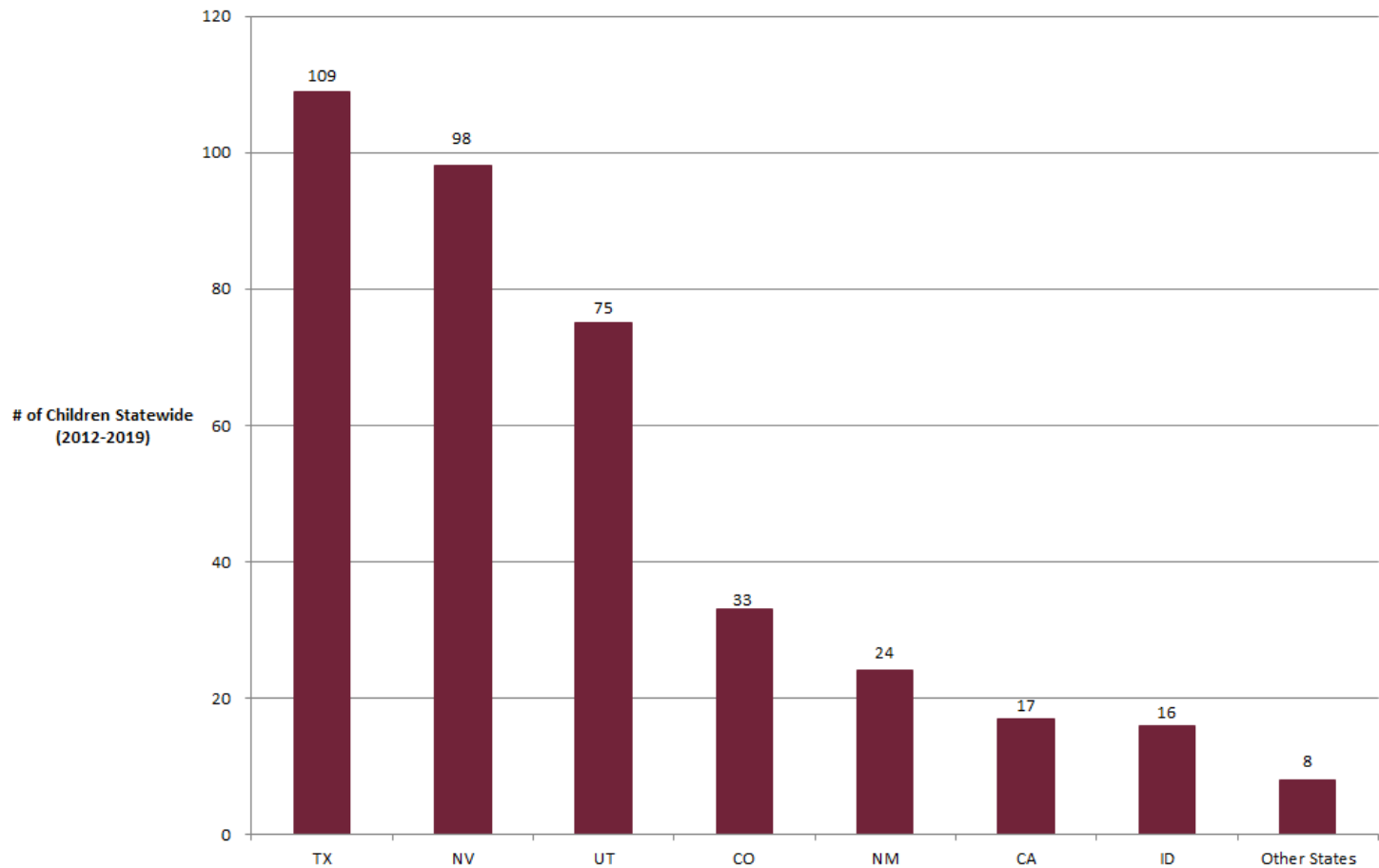
## Out-of-State RTC Utilization by Primary Diagnosis Classified as "Other" in Prior Figure



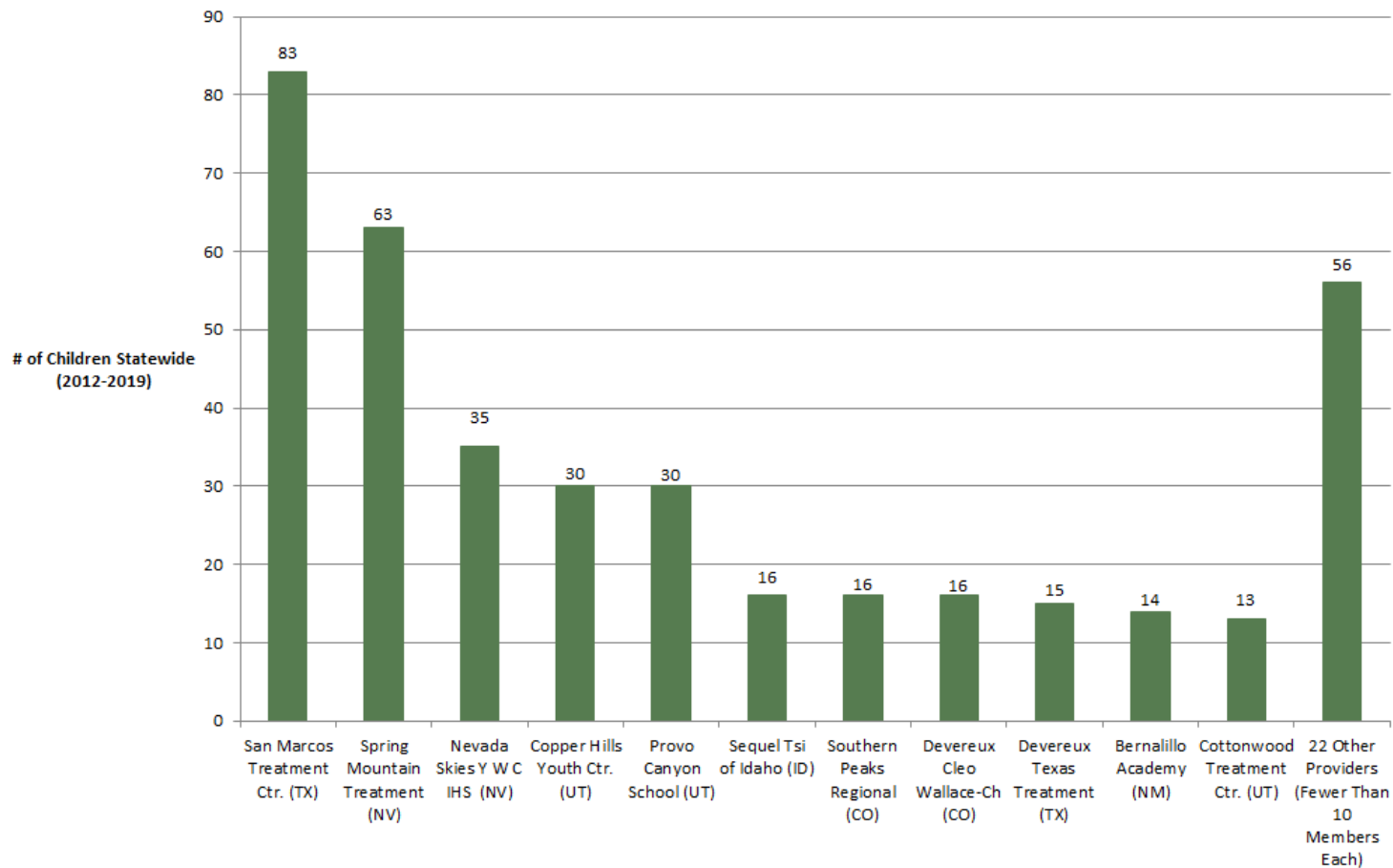
## Out-of-State RTC Utilization by Age Group



## Out-of-State RTC Utilization by State



## Out-of-State RTC Utilization by Top Providers



## Additional Analysis Underway

- Out-of-state RTC utilization for CMDP members only
- In-state RTC utilization for CMDP members only
- Update on psychotropic prescriptions

Questions/comments?



Questions?

Future Topics?

Thank You.

Next Meeting – September 18<sup>th</sup>