

Psychotropic Report



Highlights

- Children in foster care 4.1 times more likely to be on psychotropic medication compared to the general Medicaid child population in 2013 (compared to 4.4 in 2008)
- The percentage of children in foster care receiving psychotropic medications decreased by 26% from 2008 to 2014

Percentage of Children in Foster Care Receiving Psychotropic Medications, by Category

	2008	2014
Total Psychotropics	20.3%	14.9%
Antipsychotics	10.9%	6.2%
Antidepressants	7.5%	5.0%
ADHD	10.3%	10.3%
Mood Stabilizers (Lithium Only)	1.8%	1.2%
Mood Stabilizers (Lithium and Anticonvulsants)	3.6%	3.5%
Anxiolytics	0.8%	0.6%

Percentage of Children in Foster Care Prescribed Concomitant Psychotropics

Number of Concomitant Medications	Percentage of Children in Foster Care (2008)	Percentage of Children in Foster Care (2012)	Percentage of Children in Foster Care (2013)	Percentage of Children in Foster Care (2014)
2	13.6% (416)	14.0% (399)	14.2% (445)	13.1% (442)
3	5.3% (162)	7.0% (201)	6.1% (192)	5.4% (182)
4	2.2% (66)	2.6% (73)	2.7% (86)	2.5% (83)
5 or more	0.9% (27)	1.2% (35)	0.9% (28)	1.0% (34)



PMs/Dashboard Development



Performance Measures and Monitoring

- Contractually mandated
- Monitored quarterly via self-reported data
 - Significant changes or concerning trends are followed-up on and require feedback and/or corrective actions
 - Internal validation may occur if concerns are noted
- Official rates generated annually using AHCCCS encounters via the External Quality Review Organization

Behavioral Health Performance Measures Specific to CMDP

- CMDP has specific measures built into their contract including:
 - Use of Multiple Concurrent Antipsychotics in Children and Adolescents
 - Developmental Screening in the First Three Years of Life

Behavioral Health Performance Measures Specific to CMDP

- The Regional Behavioral Health Authorities (RBHAs) also have to report on CMDP-specific measures including:
 - Follow-Up After Hospitalization for Mental Health, 7 and 30 Days
 - Access to Behavioral Health Services, 7 and 23 Days
 - Mental Health Utilization
 - Use of Multiple Concurrent Antipsychotics in Children and Adolescents

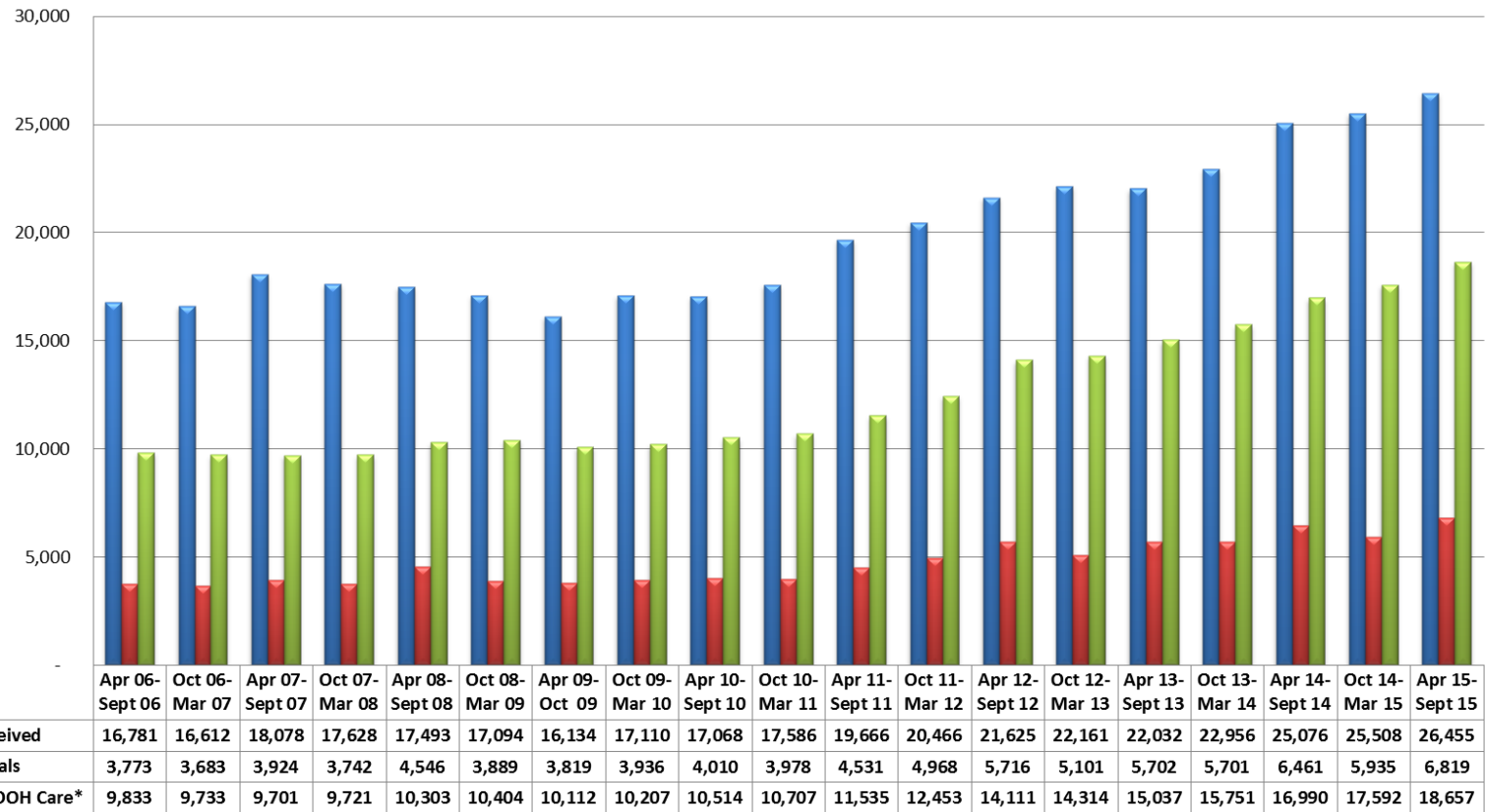
CMDP BH Dashboard Discussion

- PMs as per previous slides
- Rapid Response
 - Members Served by BH within 72 hours of referral through Rapid Response
- Service Utilization
 - Psychotropic Utilization
 - Monthly Service Valuation per Enrolled Individual
- Complaints
- Service Appeals
- Time to Permanency
- Permanency Results (% reunification v. adoption)

Discussion

Department of Child Safety (DCS)

Reports Received, Removals and Children in Out of Home Care



*Number of Children in Out of Home (OOH) Care on the Last Day of the Reporting Period

Data Source: DCS - Child Welfare Semi-Annual Reports