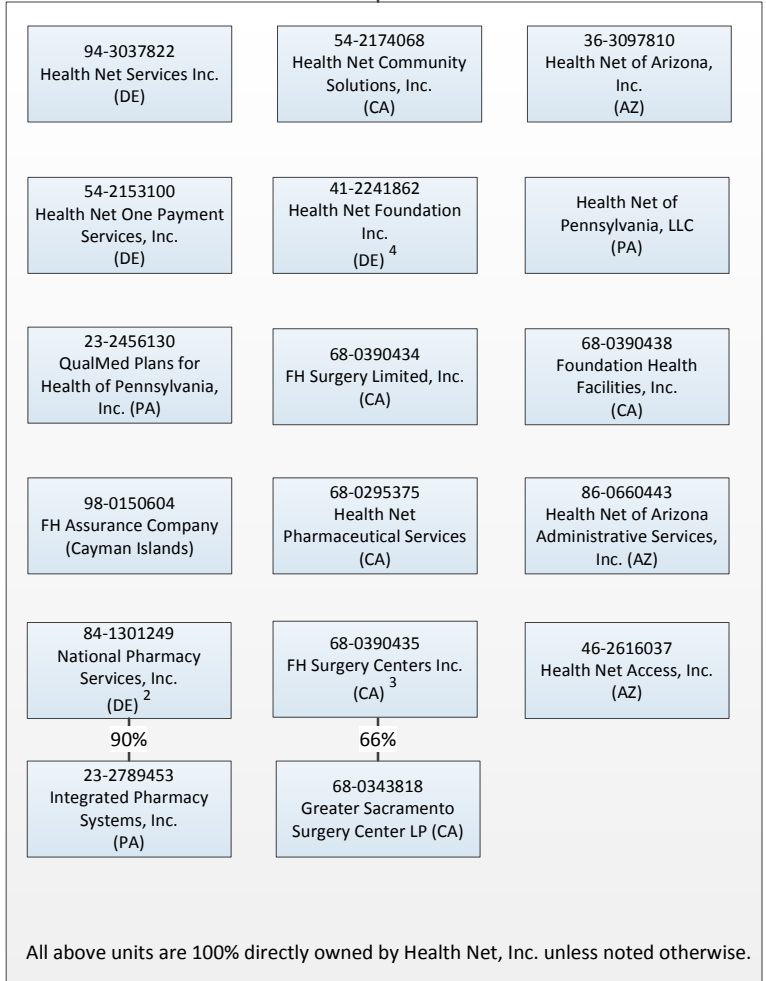
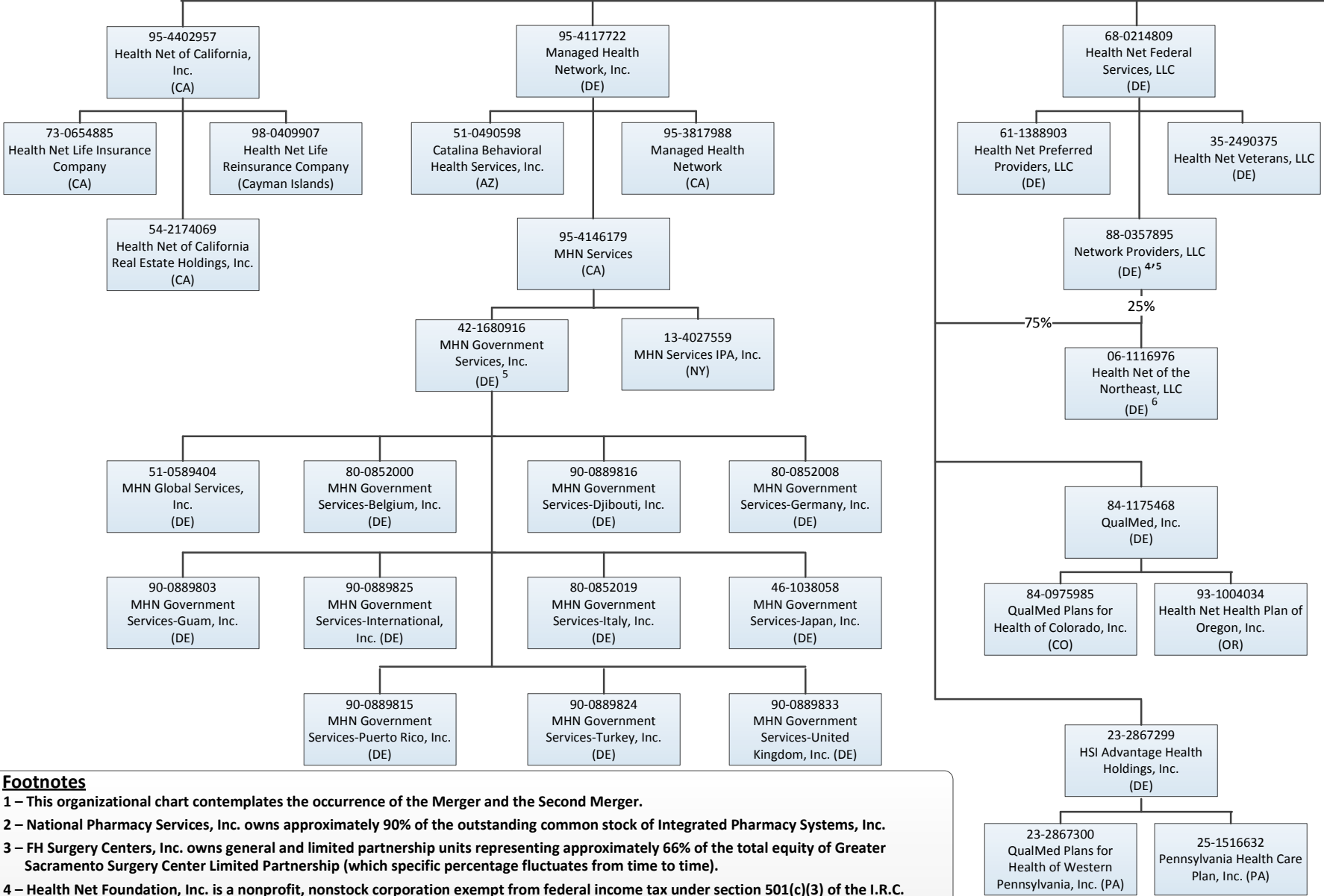


**42-1406317**  
**Centene Corporation (DE)<sup>1</sup>**

**Health Net, Inc. (DE)**  
 (All subsidiaries wholly owned unless otherwise indicated)

**See pages 2-7 for Non Health Net Subsidiaries**



All above units are 100% directly owned by Health Net, Inc. unless noted otherwise.

**Footnotes**  
 1 – This organizational chart contemplates the occurrence of the Merger and the Second Merger.  
 2 – National Pharmacy Services, Inc. owns approximately 90% of the outstanding common stock of Integrated Pharmacy Systems, Inc.  
 3 – FH Surgery Centers, Inc. owns general and limited partnership units representing approximately 66% of the total equity of Greater Sacramento Surgery Center Limited Partnership (which specific percentage fluctuates from time to time).  
 4 – Health Net Foundation, Inc. is a nonprofit, nonstock corporation exempt from federal income tax under section 501(c)(3) of the I.R.C.  
 5 – MHN Government Services, Inc. owns 10% of the equity interests in Network Providers, LLC.  
 6 – Health Net, Inc. owns 75% and Network Providers, LLC owns 25% of the outstanding equity interests of Health Net of the Northeast, LLC.

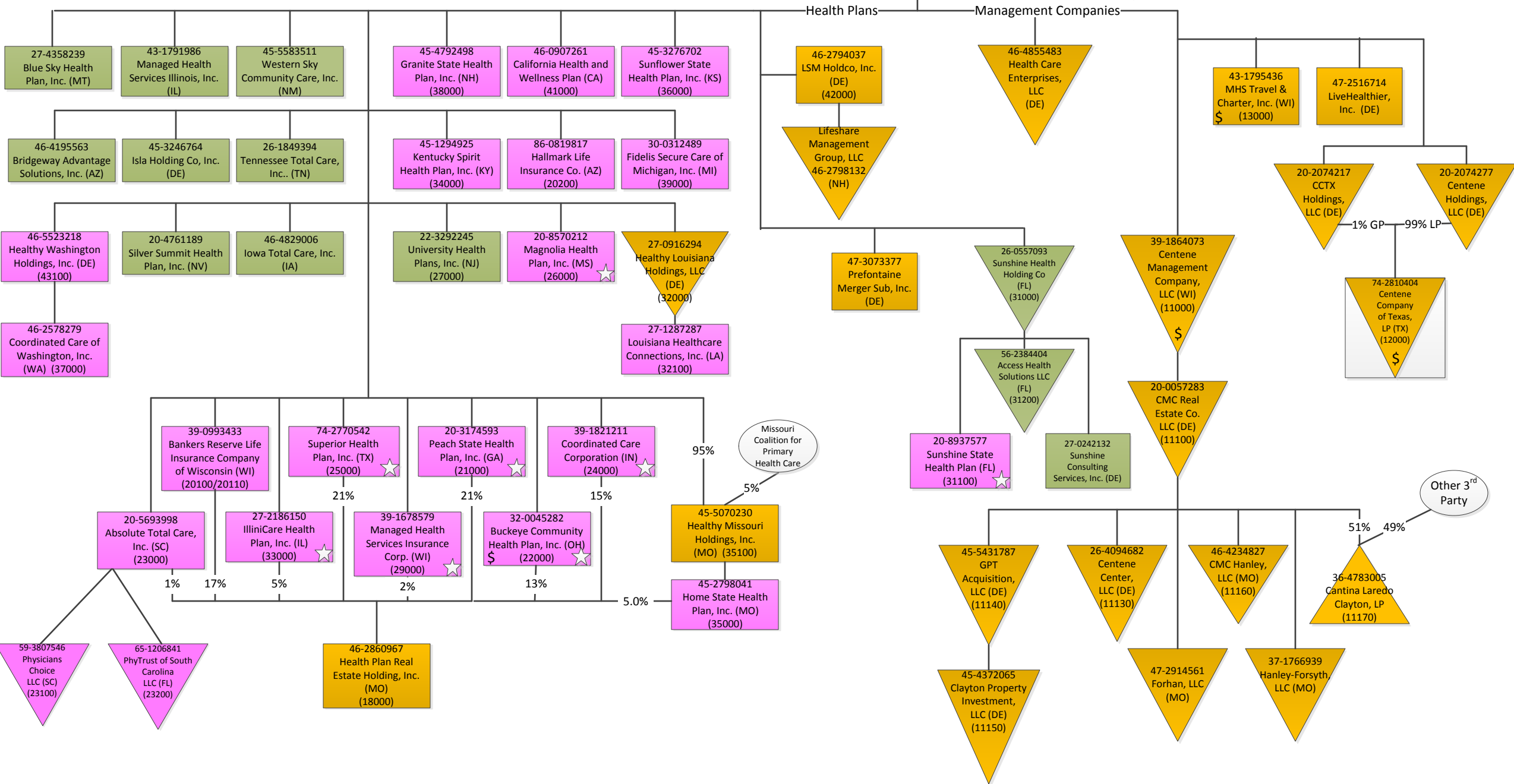
**42-1406317**  
**Centene Corporation (DE)**  
**(10000)**

Specialty Companies (p2)

International Segments (p5)

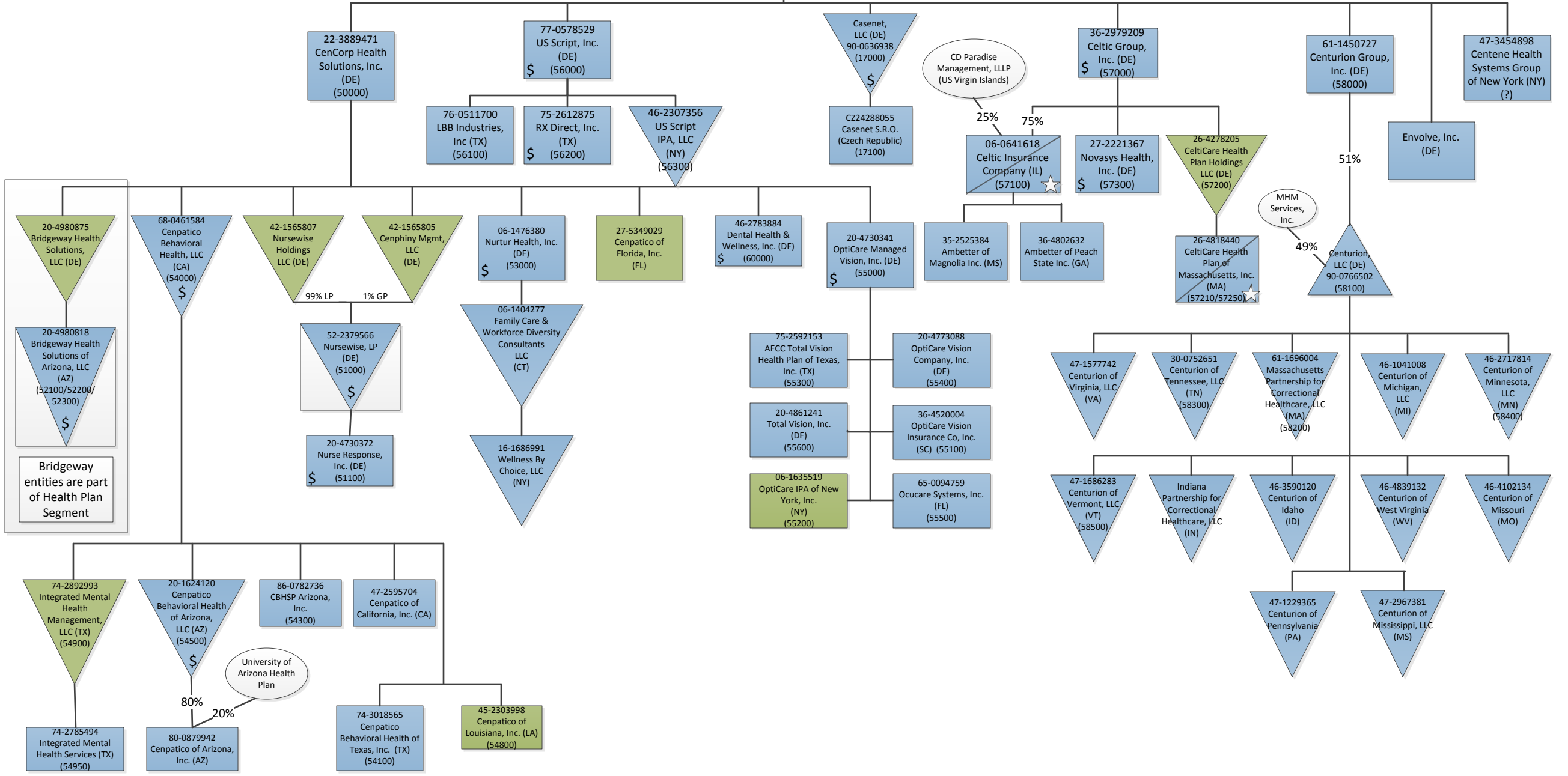
AcariaHealth Segments (p3)

USMM Companies (p4)

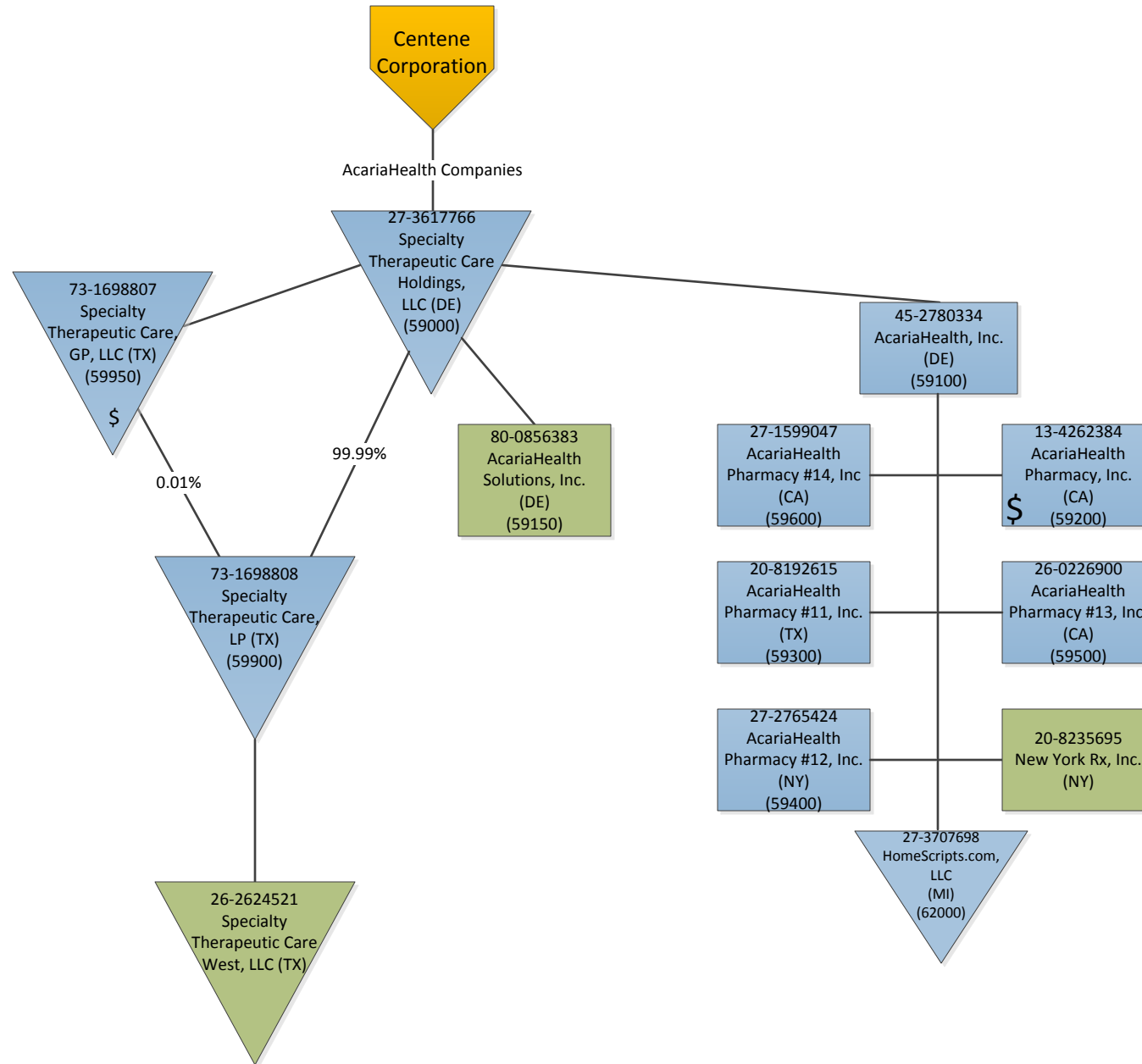




Specialty Companies



Bridgeway entities are part of Health Plan Segment



**Centene Corporation & Subsidiaries  
Organizational Chart  
Last Updated: June 30, 2015  
Page 4 – U.S. Medical Management**

VPA Group – 3<sup>rd</sup> party doctors associations that have management agreement with USMM LLC. Included in Centene’s consolidated financials due to VIE rules.

Mitchell-USMM Holdings, LLC (DE)

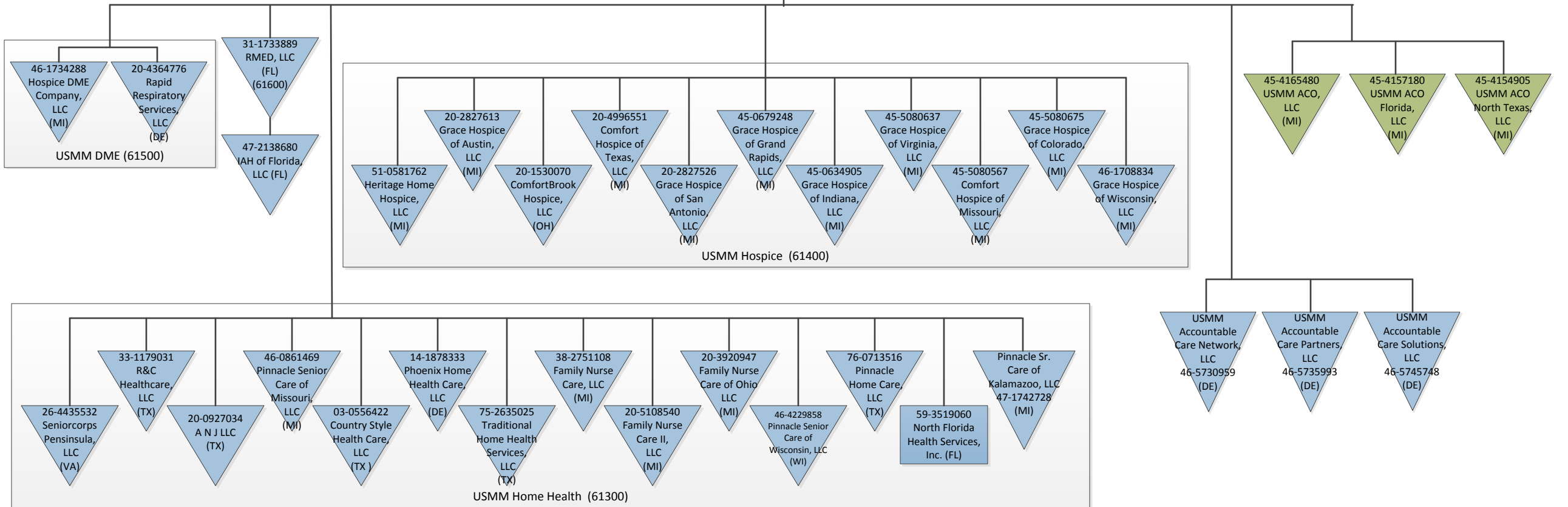
Centene Corporation

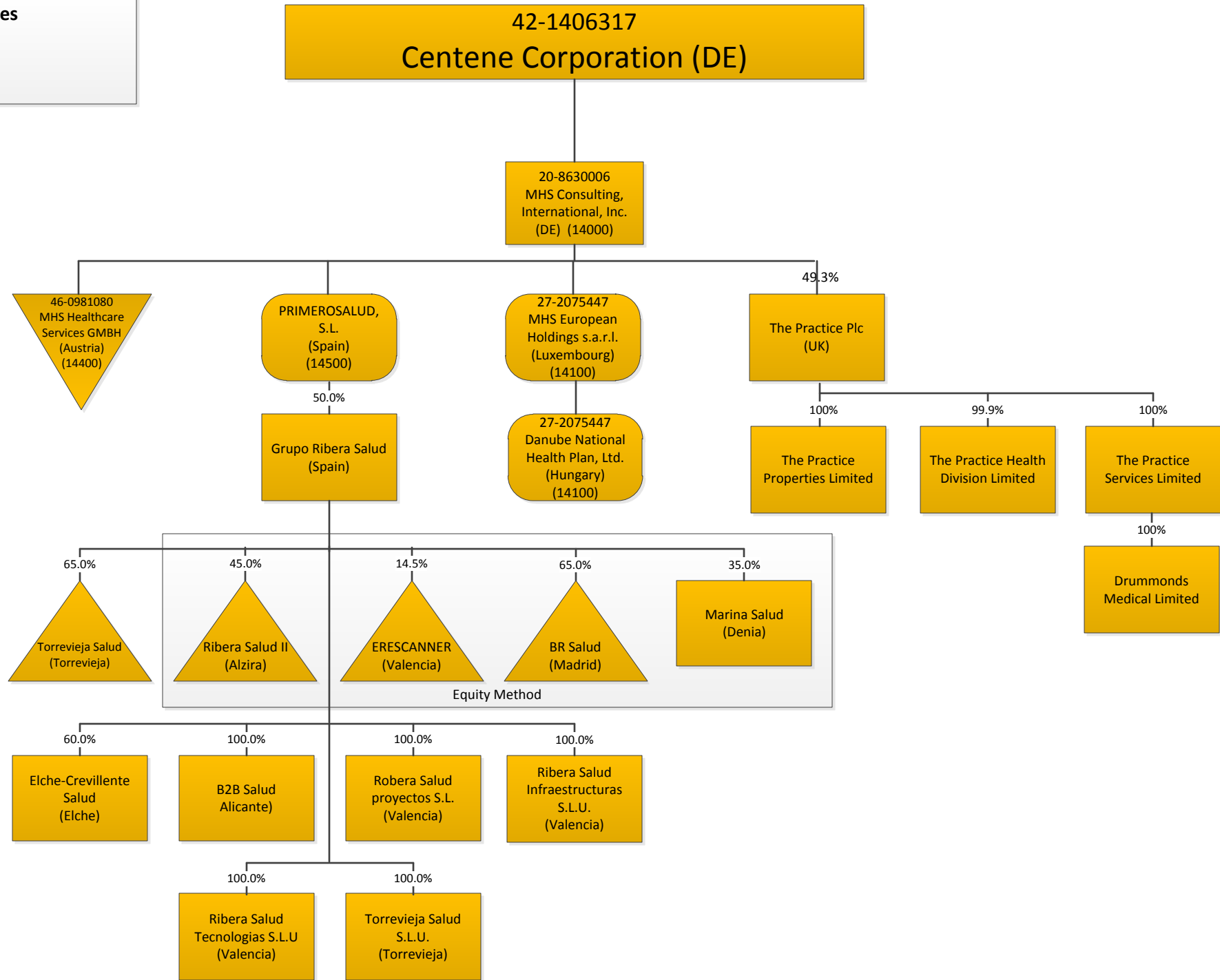
U.S. Medical Management Holdings, Inc. 27-0275614 (DE) (61200)

U.S. Medical Management, LLC 38-3153946 (DE) (61000)














**VPA Subsidiary Details (from left)**

<b>A – VPA, PC</b>		
IAH of Michigan, PLLC (MI)		47-2159305
IAH of Wisconsin, PLLC (MI)		47-2146160
<b>B – VPA of Texas</b>		
IAH of Texas, PLLC (MI)		35-2519603
Advantechs Imaging Services (TX) -dba VPA Diagnostics		36-4539790





**Legend**

	Single-member LLC		Corporate
	LLC taxed as corporation		Health Plan Segment
	Partnership		Specialty Segment
	C-Corporation		HP/Specialty Segment
	Controlled Foreign Corporation		Inactive
	Third Party		
	Includes Marketplace		
	Payroll Company		

- Not for Profit Companies**
- (1) The Centene Foundation for Quality Health Care (MO) – sole member – Centene Corporation (FEIN #20-1516497)
  - (2) The Centene Charitable Foundation (MO) – sole member – Centene Corporation (FEIN #20-1298192)
  - (3) Cenpatico Foundation (TX) (FEIN #27-1252360)