



# State Medicaid Advisory Committee (SMAC)

Wednesday October 9, 2019

AHCCCS  
 GOLD ROOM 3<sup>rd</sup> Floor  
 701 E. Jefferson Street  
 1 p.m. – 3 p.m.

## Agenda

I. Welcome	Director Jami Snyder
II. Introductions of Members	ALL
III. Approval of July 11, 2019 meeting summary	ALL
<b>Agency Updates</b>	
IV. New Member Approvals	Committee Members
V. Community Reinvestment panel	James Stover Joe Gaudino Shawn Nau
VI. Valle Del Sol (BH in schools)	Carmen Heredia
VII. AHCCCS Updates	Jami Snyder
VIII. Call to the public	Public
IX. Adjourn at 3:00 p.m.	ALL

### \*2020 SMAC Meetings

Per SMAC Bylaws, meetings are to be held the 2nd Wednesday of January, April, July and October.

**\*\*Unfortunately due to scheduling conflicts the meeting dates have changed\*\***

All meetings will be held from 1 p.m.- 3 p.m. unless otherwise announced at the AHCCCS Administration  
 701 E. Jefferson, Phoenix, AZ 85034, 3rd Floor in the Gold Room:

**January 8, 2020**

**April 8, 2020**

**July 8, 2020**

**October 21, 2020**

## **July 11, 2019 Summary**

**State Medicaid Advisory Committee (SMAC) Meeting Summary**  
**Wednesday, July 11, 2019, AHCCCS, 701 E. Jefferson, Gold Room**  
**1:00 p.m. – 3:00 p.m.**

<b>Members in attendance:</b>	Peggy Stemmler Kim VanPelt Marcus Johnson- via phone Leonard Kirschner Steven Jennings Vernice Sampson Gina Judy Joyce Millard Hoie- via phone
Jami Snyder Tara McCollum Plese Kevin Earle David Voepel Amanda Aguirre –via phone	
<b>Members Absent:</b> Kathy Waite; Cara Christ; Frank Scarpati; Daniel Haley Greg Ensell; Phil Pangrazio	
<b>Staff and public in attendance:</b>	Becky Gonzales- Viiv Healthcare Marc Arnold- Liva Nova Shannon Groppenbacher- JNJ Jennifer Carosetta- HSAA Melissa Higgins- Community Legal Service Rachel Reinhardt- AHCCCS Member Brandi Lease- GSPA Kristen Jaden- Viiv Matt Jewett- Mountain Park Siman Q.- CAA
Yisel Sanchez, SMAC Liaison AHCCCS Dana Hearn, AHCCCS Megan Woods- AHCCCS Stephanie Innes- Arizona Republic Micaela Mercado-ASU Victoria Iwinski- Chicanos Por La Causa Bob Chuuinard- Optum Barb Fanning- SLBHC Chris Vineyard- Care 1 <sup>st</sup>	

**AGENDA**

- |  |                    |
|--|--------------------|
| <b>I. Welcome &amp; Introductions</b>                          | <b>Jami Snyder</b> |
| <b>II. Introductions of Members</b>                            | <b>All</b>         |
| <b>III. Approval of April 11, 2019 Meeting Summary/Minutes</b> | <b>Unanimous</b>   |

**AGENCY UPDATES**

- |   |            |
|---|------------|
| <b>IV. SMAC Membership Needs Assessment</b> | <b>All</b> |
|---|------------|
- Discussion on needs assessment completed by committee
  - Review SMAC Committee composition
  - Peggy asked to be identified as public member under composition
  - Committee asks for status on Frank Scarpati since retired
  - Jami to reach out to DES regarding new Directors participation on committee
  - Kim Van Pelt will send in recommendation on predecessor
  - Peggy suggests someone with content knowledge on kids
  - Committee would like to revisit mission
  - Committee suggest members with housing and payee knowledge
  - Committee sub group to review nominations
  - Sub group- Leonard Kirschner, Peggy Stemmler, David Voepel
  - Sub group will review nominations and present to the committee
  - Vacancies to be filled in October 2019

**V. Arizona Dental Association  
The State of Arizona's Oral Health**

**Kevin Earle**

- Comprehensive preventative and restorative services for children under the age of 21
- ALTCS- Coverage dropped in 2006, restored in 2016, \$1000.00 annual coverage limit, sedation and anesthesia included under the cap
- Adult emergency benefit eliminated in 2010
  - Treat and release visit increased by 29% from 2009-2011
  - Costs increased by 69%
  - Patient admissions increased by 37%
  - Costs increased by 40%
  - Many patients
  - RX for pain and infections
- Adult emergency dental benefit effective 10.17
  - Limited to patients with a dental emergency
  - No preventative services
  - Emergency diagnostic exam and x-ray
  - Resin restorations due to recent tooth fracture
  - Prefab crowns
  - RCT and cast crowns
  - Extractions
  - Annual limit of \$1000
- 2015 Oral Health status- Children K-3<sup>rd</sup>
- Dental Care use among children in 2006-2016
- Dental Care use across the United States
- Prevalence of ECC by race
- IHS data
- Indian Health Service date April 2019
- Policy
  - Establish oral health surveillance plan
  - Use data to educate
  - Increase fluoridation
  - Advocate for more coverage
- Care
  - Adequate diverse and culturally competent workforce
  - Incorporate oral health into overall health and well being
  - Inter-professional education
- Community
  - Maintain statewide network of leaders and champions
  - Support evidence based prevention and early detection
  - Consistent and Uniform Messaging
- Financing
  - Financing oral health as a component of overall health
  - Fund additional coverage and expand prevention programs
- Adult Coverage: Dental profession responds
  - Supported by America's Dentist care foundation
  - Arizona's Mission of Mercy (8 years)
  - Veteran's Standown
  - AZMOM North

- Range of Services
  - 24 cleaning chairs
  - 38 restorative chairs
  - 24 extraction chairs
  - 4 root canal chairs
  - Same day crowns
  - PEDO
  - Flippers
  - Dentures
- AZMOM 2018
  - By income 72% of patients are under \$36,000 in family income
  - Volunteers
    - 278 dentist
    - 429 dental assistants
    - 192 hygienists
    - 14 x-ray techs
    - 45 lab techs
    - 5 pharmacists
    - 14 registered nurses
    - 5 nurse practioners
    - 3 physician assistants
    - 2 medical doctors
    - 308 students
    - 24 translators
    - 491 general volunteers
- Patients and Value of Care 2018
  - \$1,929,803.23 in free dental care
  - 1810 patients treated
  - \$162,000 in free medical screening services
  - \$259,629 in free vision screenings and glasses
- Takeaways
  - Charity is not a system of care
  - \$1000 cap
  - \$200,000 annual cost
  - Volunteer burn out
- NEXT EVENT- December 6-7 2020, Veterans Coliseum, State Fair Grounds

**VI. ASD Advisory Committee Clinical Initiative Update**

**Megan Woods**

- History
  - 30 stakeholders appointed in April 2015
  - Five work groups created
    - Early Identification and Diagnosis
    - Evidence-based treatment
    - Reducing system complexity
    - Increasing network capacity
    - Adults with Autism Spectrum Disorder
- Recommendation report delivered in February 2016
- Committee meets quarterly
  - Meeting include updates, presentations, discussions on system changes, policies and emerging issues
  - Additional work groups

- Coordination of Benefits
  - ASD and Crisis Response
  - Evidence Based Treatment
- AHCCCS finalizing policy specific to Applied Behavior Analysis
  - Public comment end of July 2019
- Questions
  - Demographics?
  - Report available on line?

## VII. AHCCCS Updates

Jami Snyder

- AHCCCS Strategic Plan
  - Pursue and implement long term strategies
    - Percent of health plan spend in alternative payment models
    - Percent of Medicaid enrolled students receiving BH service on campus
    - Number of enrollees housed through the healthcare and housing program
  - Reduce fragmentation
    - Retention rate amongst TI participants
    - Number of provider organizations participating in HEI
    - Percentage in prerelease inmates
    - Percentage of CMDP enrollees
  - Pursue continuous quality improvement
    - Number of performance measures, among 5 measures
    - Number of facilities achieving medical home status
    - Percent of opioids prescribed
  - Maintain core organizational capacity, infrastructure and workforce planning
    - Employee engagement
    - Number of Staff that complete mental health awareness training
- Integration Update
  - AHCCCS Timeline
  - DES/DDD Integration 10/1/2019
    - DDD awarded 2 statewide subcontracts
    - Integrated plans go into effect 10/1/2019
    - United Healthcare Community Plan and Mercy Care Plan
    - Members have choice
    - Stakeholder communication
    - Ensuring smooth transition
- AHCCCS Works and Retroactive Coverage Update
  - AHCCCS Works requirements
    - No sooner than 1/1/2020
    - Able-bodied adults 19-40 that don't qualify for an exemption
    - Must for at least 80 hours a month
      - Be employed
      - Actively seeking employment
      - Attend school
      - Participate in employment readiness activities
      - Engage in community service

- Who is exempt?
- AHCCCS Works geographic phase in recommendations
- AHCCCS Works next steps
- Waiver of retroactive coverage
- Review of 2019 Legislative session
- AHCCCS supported bills
  - SB1336
  - SB1244
  - SB1134/HB2513
  - SB1211
  - SB1246
- Other bills and budget
- Recent upcoming developments
- Rideshare/equine transport
- Telehealth
- Differential adjusted payments CYE20

**VIII. Call to the Public**

**Jami Snyder**

- RFP on Hospital assessment and FMAP drop for expansion population?  
**Working closely with Hospital association - no hospital in system would be a loser. There are individual hospitals but the system as a whole is still not losing.**
- Do you reach out to the public for recommendations or suggestions? **Dana to get more information from the member.**
- Define exempted populations-**To the degree possible we are using data we have and walk through policy considerations**
- Exemption list - clients are on but still the majority want employment resources? **AHCCCS will continue to provide employment services and education around options for employment and supportive services and community availability**
- Clarification on AHCCCS Works-How is this being delivered? **Policy group working through the details.**
- Will the implementation/evaluation plan be available once they're approved? **Will be posted once approved.**

**IX. Agenda Items- Not discussed**

**X. Adjourn at 3:18 p.m.**

**All**

# **New Member Approvals**



# **Community Reinvestment Panel**

# **Valle Del Sol**

# VALLE DEL SOL'S INTEGRATED SCHOOL BASED SERVICES

CAITLIN GIZLER, MAS, LMFT, BHP  
DIRECTOR OF INTEGRATED SCHOOL BASED SERVICES



# VDS INTEGRATED SCHOOL BASED SERVICES

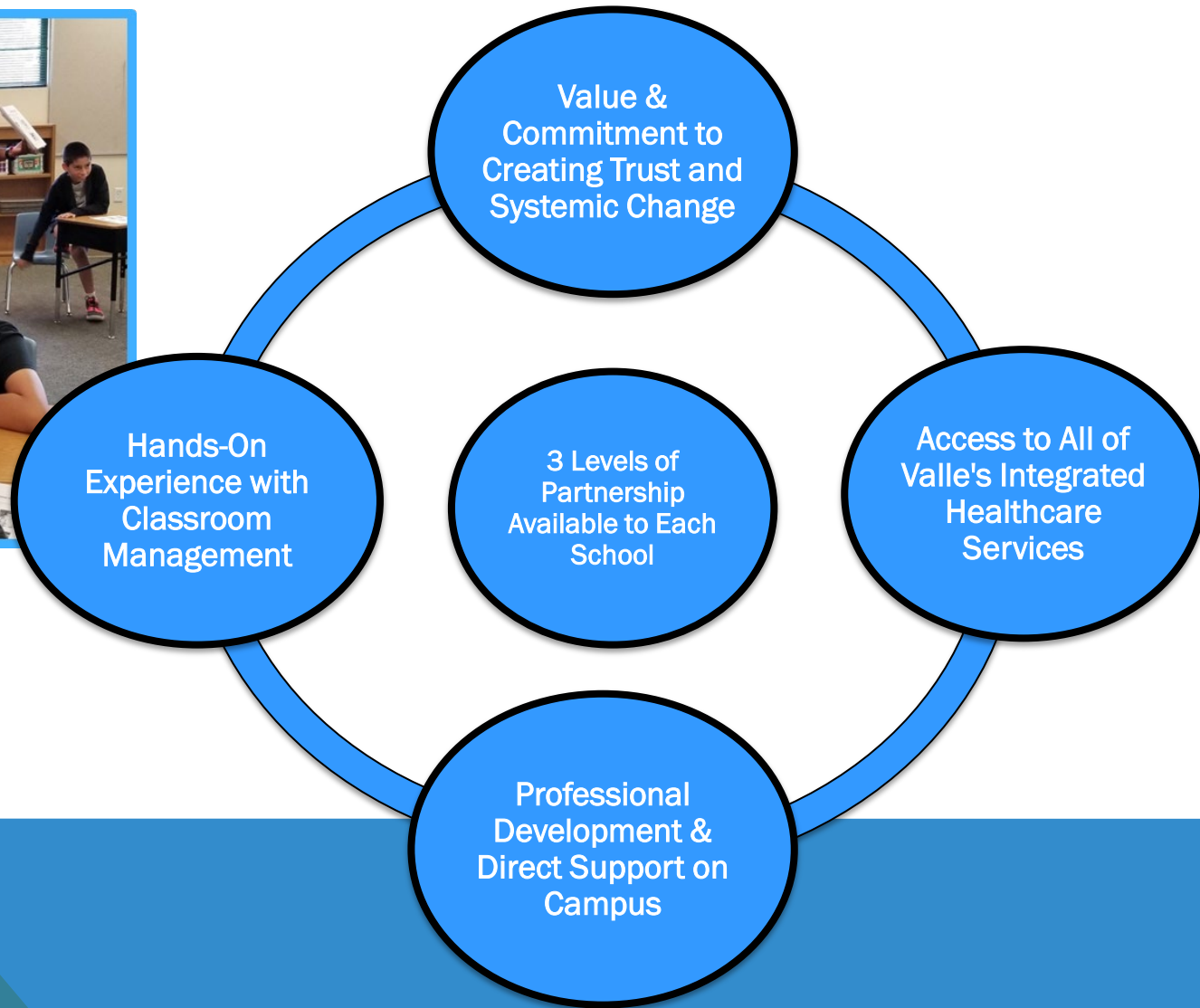


**Valle del Sol**  
COMMUNITY HEALTH

Valle del Sol inspires positive change by investing in human services to strengthen families with tools and skills for self-sufficiency and by building the next generation of leaders.



# VDS INTEGRATED SCHOOL BASED SERVICES

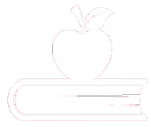


# VDS ON CAMPUS SUPPORT

*"Parents are not as intimidated by mental health services out of their child's school and comfortable receiving services or intakes at the school."*

*– Fabiola Marquez, School Psychologist,  
Clarendon Elementary School*

School Based  
Services

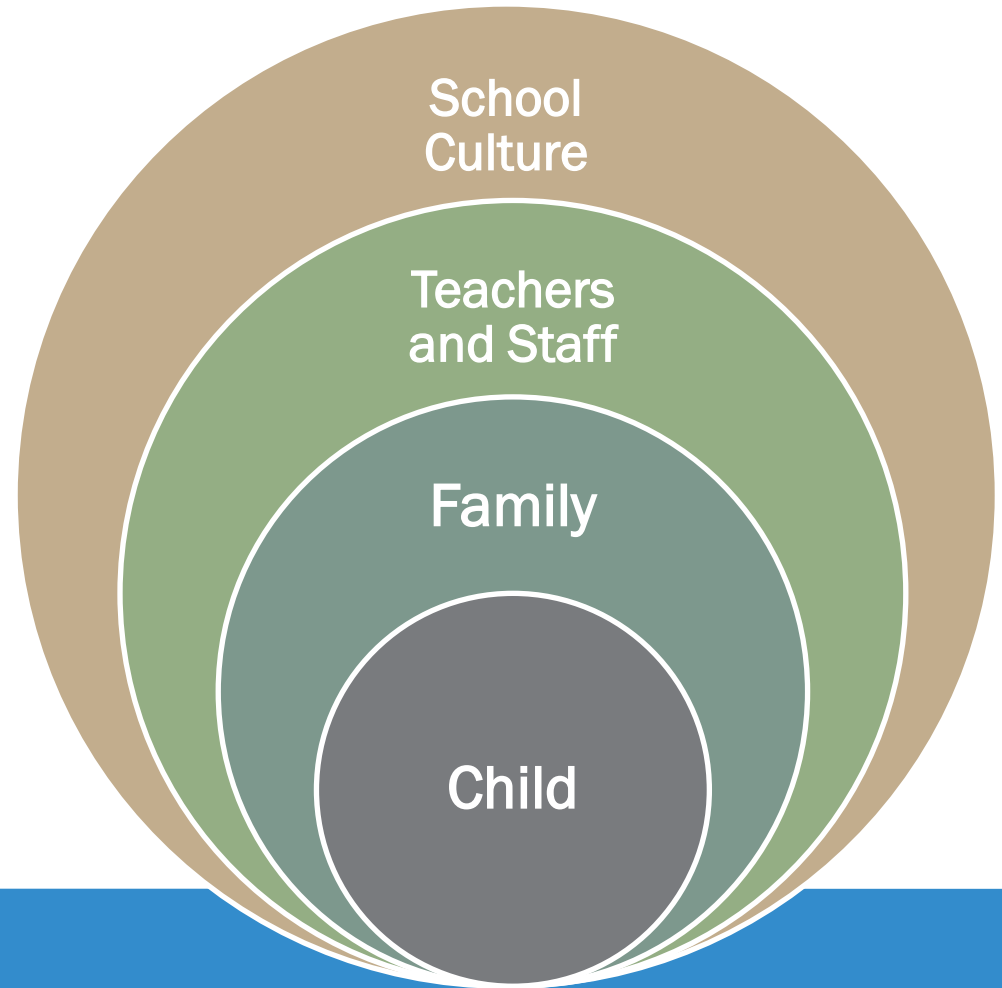


- Navigating Healthcare & Resources
- Trust and Relationship Building with Staff and Families
- Clinical Screenings & Assessments
- Clinical Observations in the Classroom
- 1:1 Coaching for Students
- Parenting Support Workshops
- Individual and Family Therapy
- Therapy Groups and Skills Groups
- CFT's Connecting Families and Teachers Back Together
- De-Escalation Support for Students and Staff
- Professional Development for Teachers
- Intensive Groups During School Breaks
- Warm Hand Offs to Office Based Providers
- Higher Show Rates for Medical & BH Appts

# CO-CREATING SYSTEMIC CHANGE ON CAMPUS



*Supporting Teachers & Families  
with accessible workshops and  
professional development*



# CONQUERING BARRIERS AND CELEBRATING SUCCESSES

*In the school, staff can quickly identify families that need extra support and then with a swift response from Valle Del Sol, we are able to address concerns from an academic and social emotional standpoint effectively – Fabiola Marquez, School Psychologist, Clarendon Elementary School*

- Navigating space & schedules
- Supporting children with a variety of insurance coverage, (or lack thereof)
- Engaging families who may not be as present
- Providing support in crisis events
- Establishing consistent communication





# THANK YOU!

Any Questions Regarding Valle's School Based Services:

Contact Caitlin Gizler, MAS, LMFT

Director of Integrated School Based Services

[CaitlinG@valledelsol.com](mailto:CaitlinG@valledelsol.com)

602-258-6797



# **AHCCCS Update**



# AHCCCS Update

**State Medicaid Advisory Committee**

**October 9, 2019**



# AHCCCS Strategic Plan

Reaching Across Arizona to Provide Comprehensive, Quality Health Care for Those in Need

Pursue and implement long term strategies that bend the cost curve while improving member health outcomes.

Reduce fragmentation driving towards an integrated sustainable healthcare system

Pursue continuous quality improvement

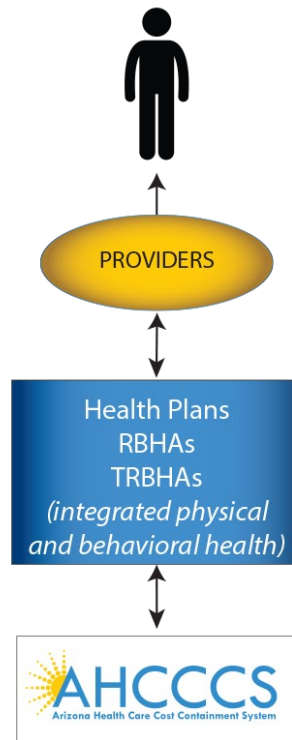
Maintain core organizational capacity, infrastructure and workforce planning that effectively serves AHCCCS operations

# Integration Update



# Integration at All Three Levels

AHCCCS COMPLETE CARE (ACC)  
DELIVERY SYSTEM



Reaching across Arizona to provide comprehensive  
quality health care for those in need

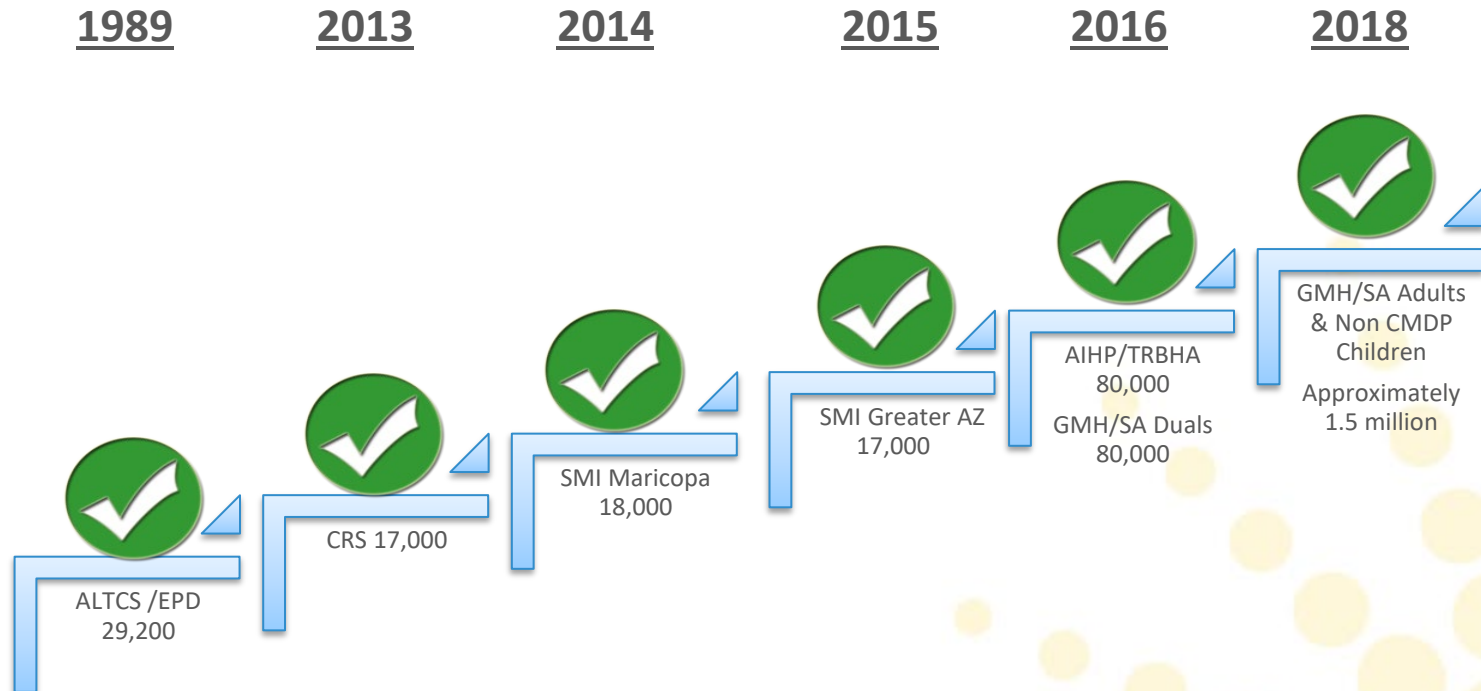
# Agency/Policy Initiatives

---

- Continuum of Care workgroup
- Addition of Chief Clinical Officer for Behavioral Health
- COE/COT, Crisis, Credentialing workgroups
- Transition of covered BH Services Guide to AMPM
- Behavioral health fee schedule updates

# Payer Initiatives

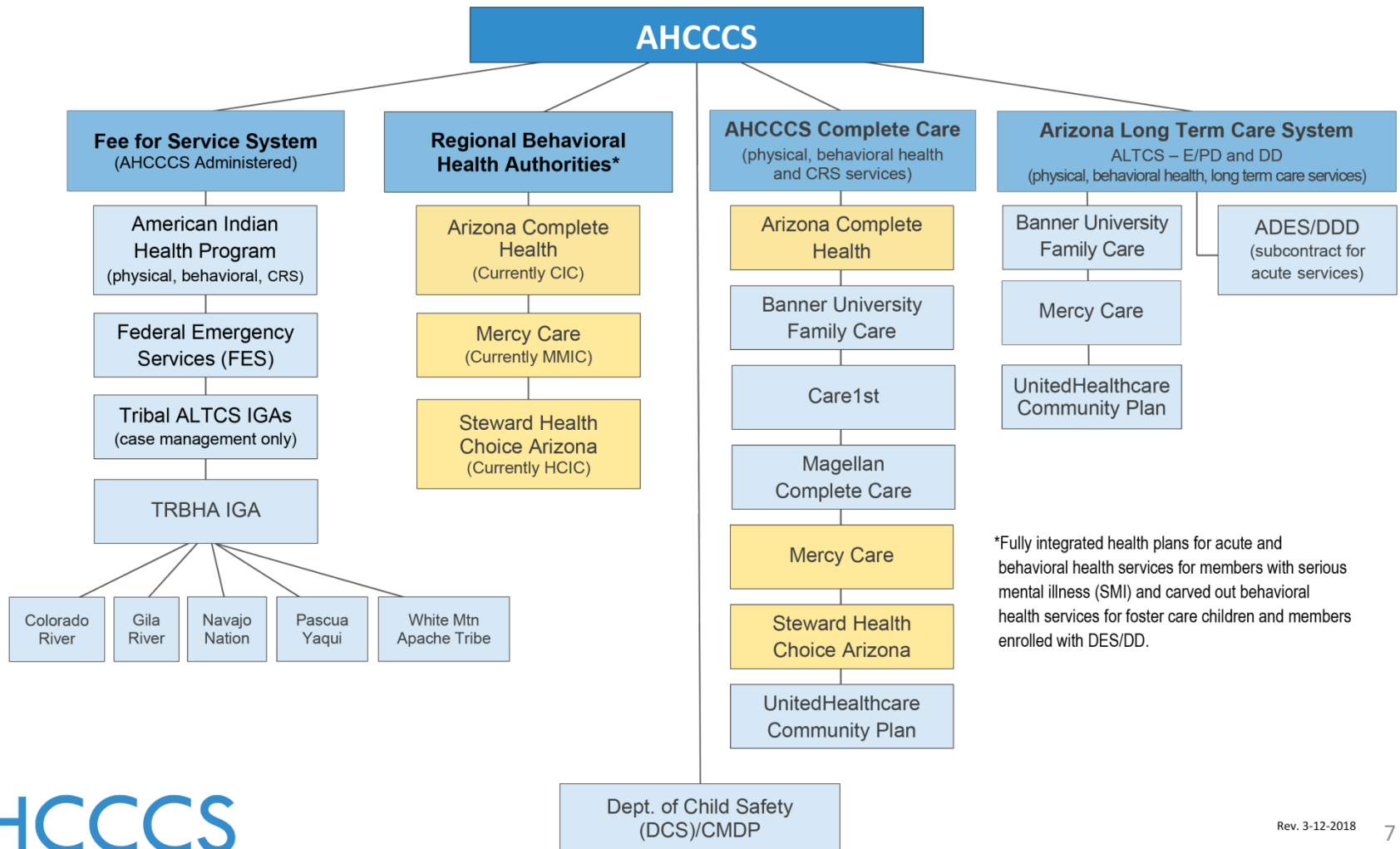
## Key Integration Milestones





# Payer Initiatives

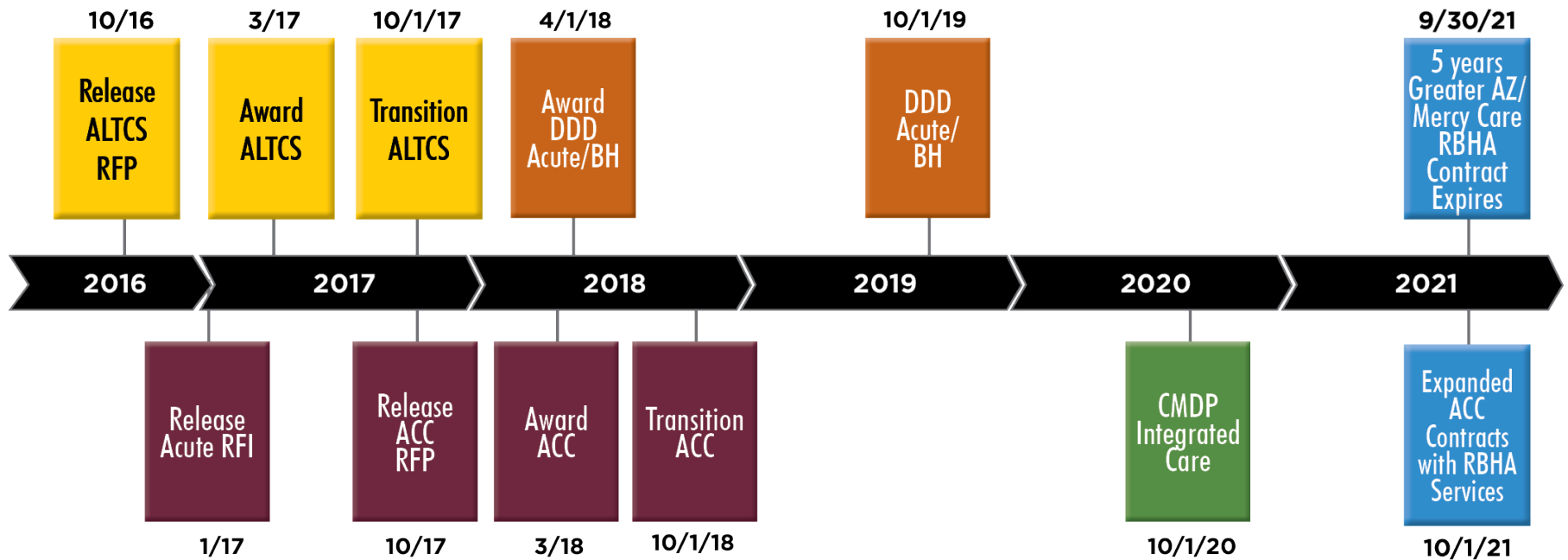
## Current Care Delivery System



\*Fully integrated health plans for acute and behavioral health services for members with serious mental illness (SMI) and carved out behavioral health services for foster care children and members enrolled with DES/DD.

# Payer Initiatives

## Integration Timeline



# Provider Initiatives

## Targeted Investments Program

---

- Year 2 Incentive Payments made in May/June 2019: \$66.5 million
- Most Challenging Milestone: SDOH community connections
- Year 3 (10/1/18 – 9/30/19)
  - Focused on implementation of systems and protocols established in Year 2
- Years 4 & 5 (10/1/19 – 9/30/21)
  - Incentive funding tied to performance on identified metrics

# Provider Initiatives

## Targeted Investments Program

---

- Pediatric PCP
  - Well-child visits in the first 15 months of life
  - Well child visits in third, fourth, fifth and sixth years of life
  - Adolescent well-care visits
- Pediatric BH
  - Pediatric follow-up after hosp. for mental illness ages 6-17 (7 - Day)
  - Pediatric follow-up after hosp. for mental illness ages 6-17 (30 - Day)
  - Metabolic monitoring for children and adolescents on antipsychotics

# Provider Initiatives

## Targeted Investments Program

---

- Adult PCP & BH
  - Follow up after hospitalization for Mental Illness: 18 and older (7 - Day)
  - Follow up after hospitalization for Mental Illness: 18 and older (30 - Day)
  - Diabetes Screening for People with Schizophrenia or Bipolar Disorder who are using antipsychotic medications

# Provider Initiatives

## Targeted Investments Program

---

- Justice
  - Initiation of Alcohol and Other Drug Abuse or Dependence Treatment (14 - Day)
  - Engagement of Alcohol and Other Drug Abuse or Dependence Treatment (34 - Day)
  - Follow up after hospitalization for Mental Illness: 18 and older (7 - Day)
  - Follow up after hospitalization for Mental Illness: 18 and older (30 - Day)
  - Diabetes Screening for People with Schizophrenia or Bipolar Disorder who are using antipsychotic medications

# Provider Initiatives

## Targeted Investments Program

---

- Hospital
  - Follow up after hospitalization for Mental Illness: 18 and older (7 - Day)
  - Follow up after hospitalization for Mental Illness: 18 and older (30 - Day)

# Recent Developments





# Recent Developments

- Implementation of integrated care model for individuals served by ADES/DDD
- SB 1535 – Outpatient Treatment Program engagement and oversight
- Healthcare and Housing (H2) project
- Continued effort to increase access to behavioral health services on school campuses
- Issuance of major decision points on RBHA services (Competitive Contract Expansion):  
[https://azahcccs.gov/PlansProviders/Downloads/RFPInfo/YH20/MajorDecisions\\_1-092019.pdf](https://azahcccs.gov/PlansProviders/Downloads/RFPInfo/YH20/MajorDecisions_1-092019.pdf)

# Recent Developments

---

- Formation of Division of Grants Management (centralizing grant administration within AHCCCS)
- Recruitment of new Medical Director and Chief Clinical Officer for Behavioral Health
- Research and planning in anticipation of 1115 waiver renewal (10/1/21)

# Questions

