



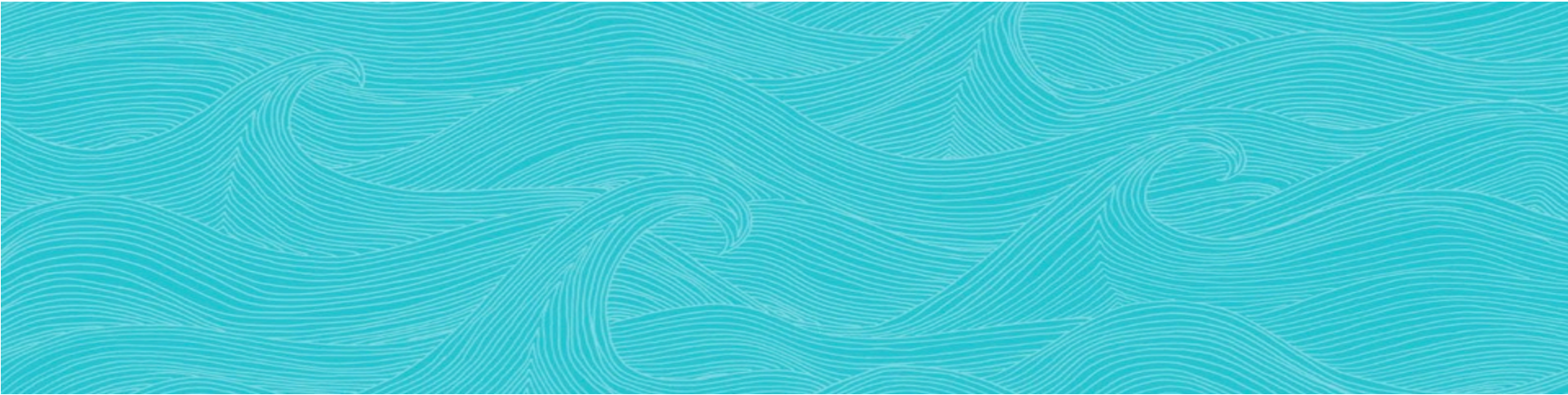
healthcurrent

# Health Current Update

*AHCCCS ACC MCO Meeting*

Melissa A. Kotrys, MPH  
Chief Executive Officer

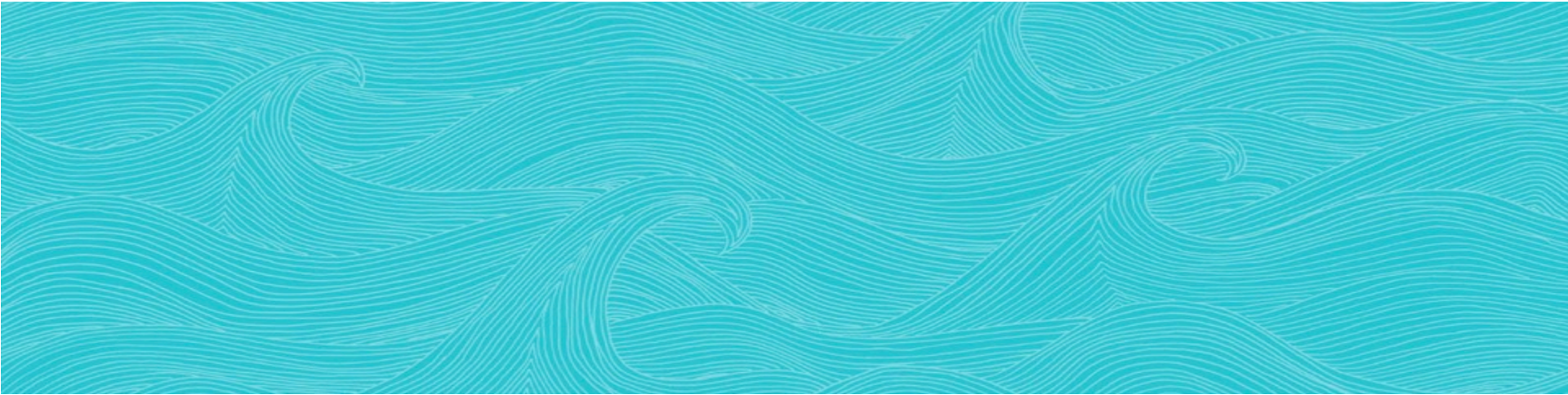
January 21, 2020



# Agenda

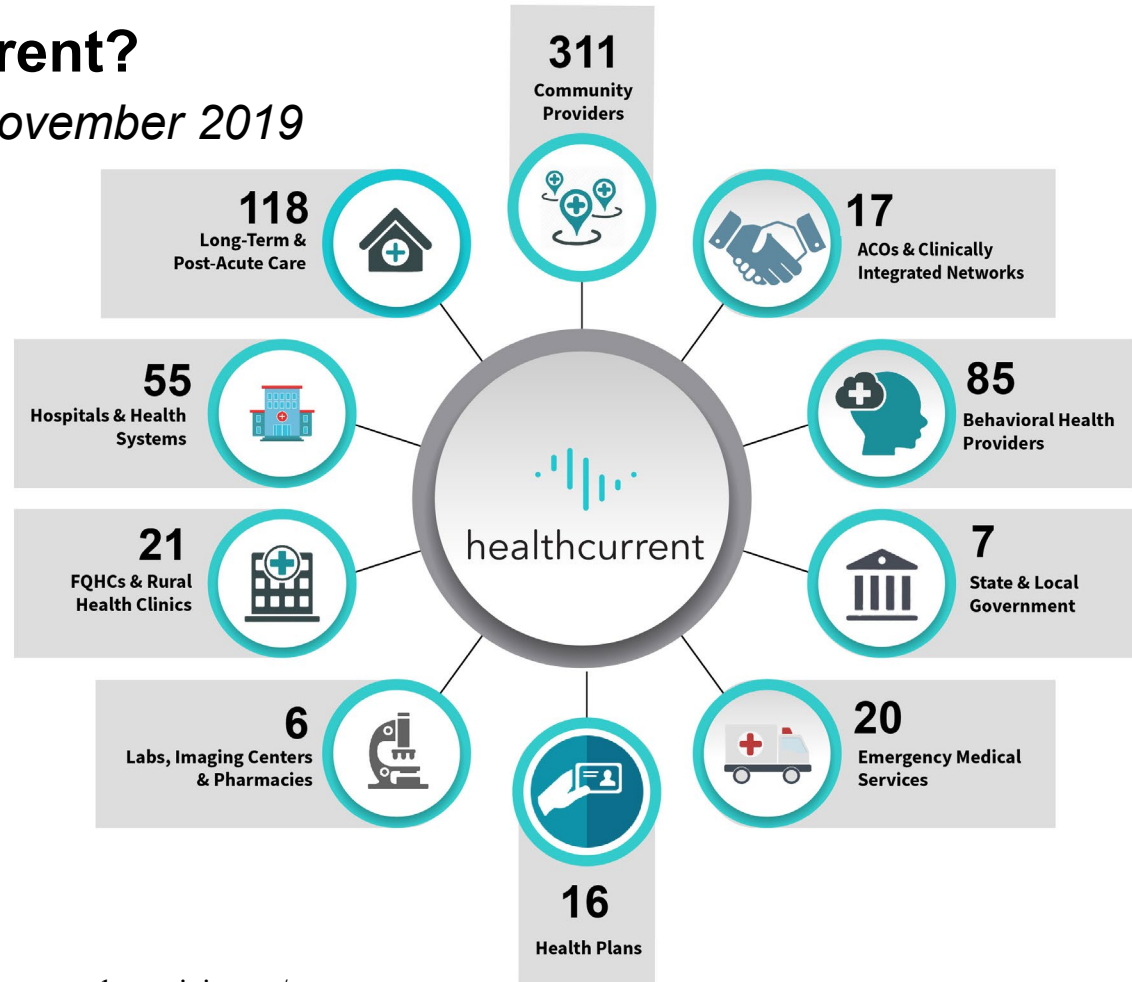
- Current Stats
- 2020 – 2022 Strategic Business Plan
- Upcoming Activities & Opportunities

# Current Stats



# Who is Health Current?

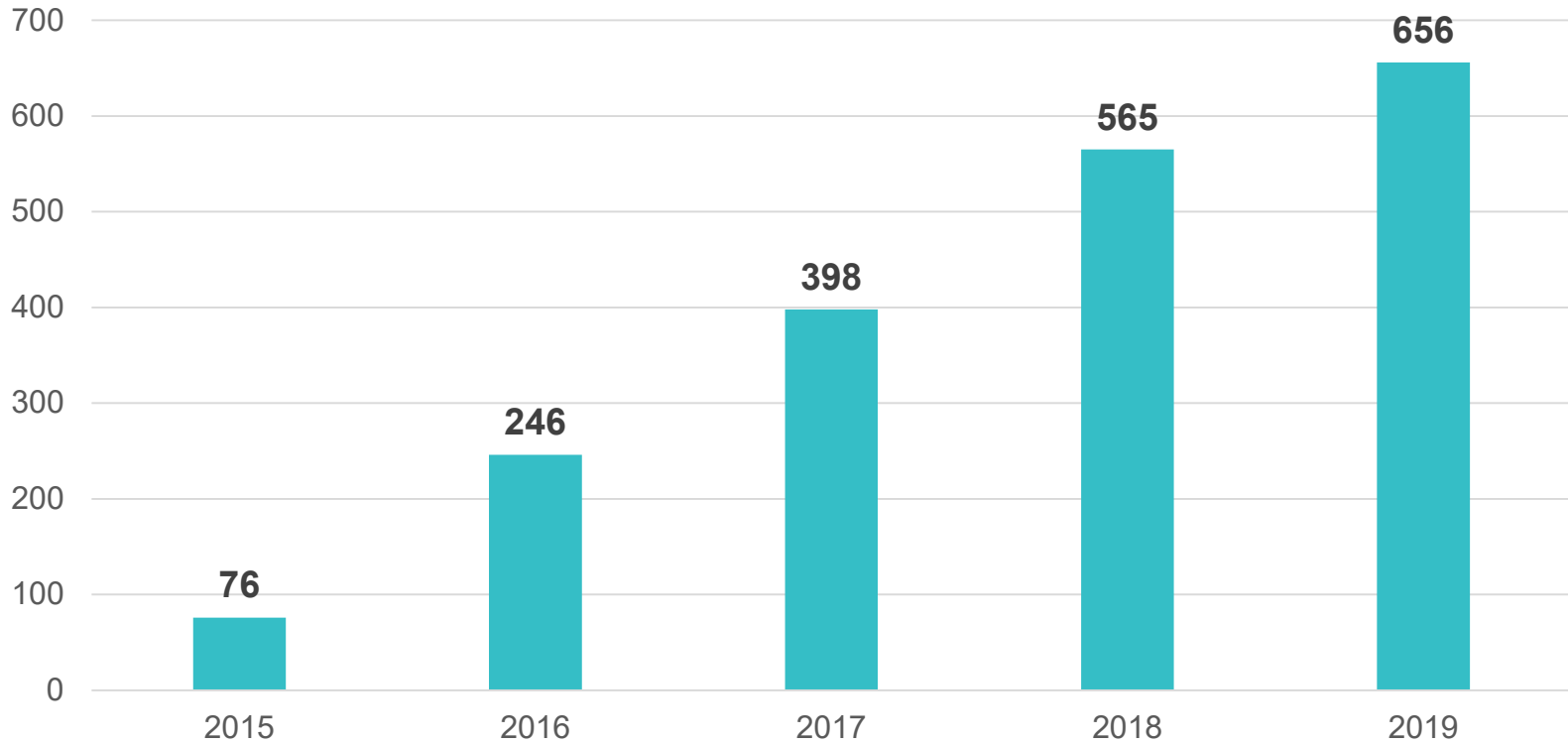
656 Participants as of November 2019



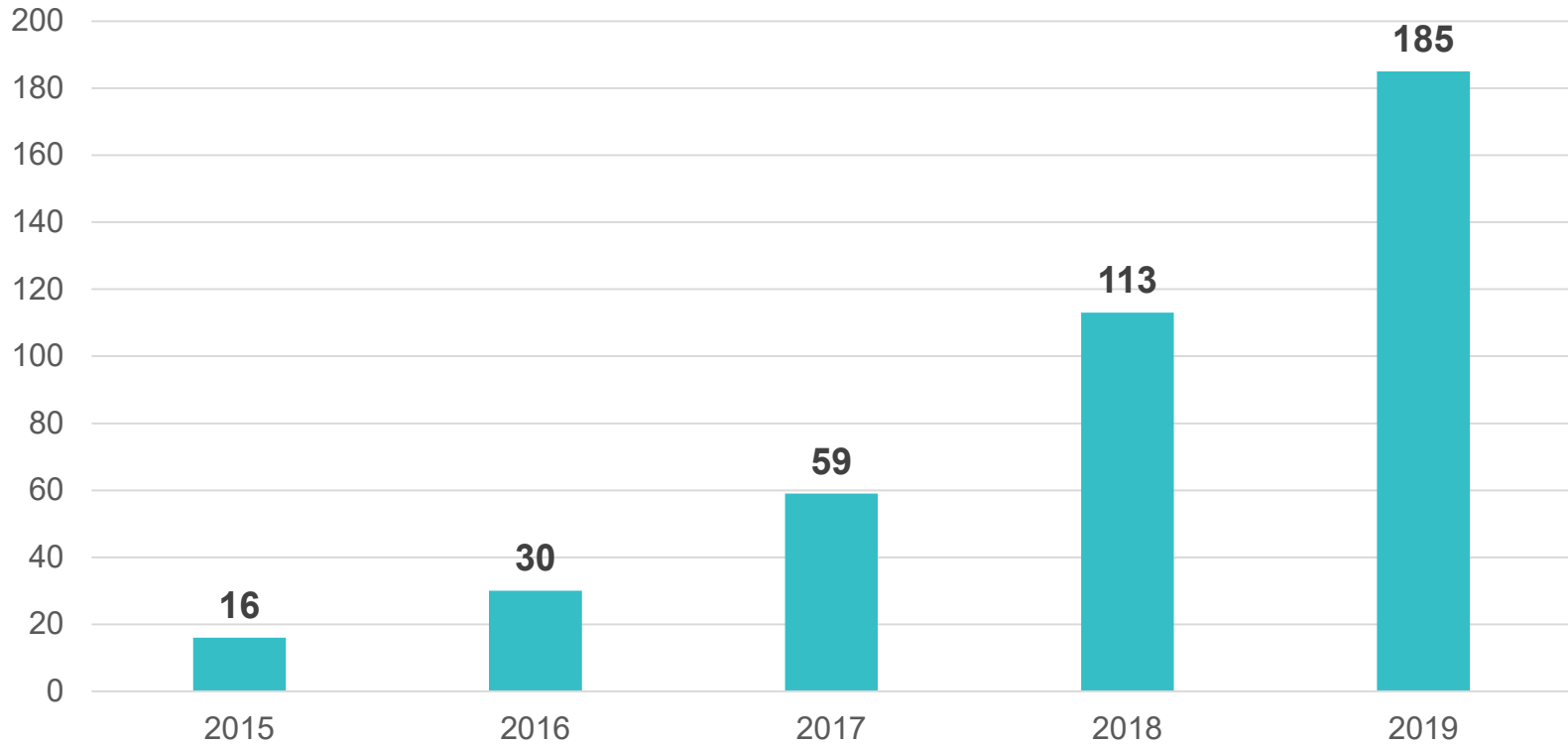
# Health Current Participation (as of November 2019)

PARTICIPANTS		656
Accountable Care Organizations		17
Behavioral Health Providers		84
Community Providers		311
EMS/Community Paramedicine Programs		20
FQHCs & RHCs		21
Health Plans		15
Hospitals & Health Systems		55
<i>Acute Care Hospitals &amp; Health Systems</i>	26	
<i>Critical Access Hospitals</i>	9	
<i>Long Term &amp; Sub-Acute Hospitals</i>	4	
<i>Psychiatric Hospitals</i>	7	
<i>Rehabilitation Hospitals</i>	9	
Laboratories & Pharmacies		6
Long Term & Post Acute Care Providers		120
<i>Assisted Living Services</i>	22	
<i>Home Health Services</i>	23	
<i>Hospice &amp; Palliative Care</i>	19	
<i>SNF &amp; Rehabilitation Services</i>	56	
State & Local Government Agencies		7
HIEs (count not included in total)		19

# HIE Participant Growth



# HIE Data Suppliers





## **Behavioral Health Data Access (as of November 2019)**

- 66 data suppliers sending data to the “protected” area of the HIE
- 29 organizations have implemented Part 2 patient consent process to access protected data
- 20 Health Current participants in process of implementing Part 2 patient consent process to access protected data
- Part 2 patient consent access still a significant administrative burden
- Considering a “general designation consent” process for access by healthcare providers for treatment purposes – more to come in 2020!
- Interested to access BH data? Let your Health Current Account Manager know and we will get you scheduled for access.

## 66 Behavioral Health Facilities Submitting Part 2 Data

A New Leaf

Arizona's Children Association

Assurance Assertive Community Treatment, LLC

Aurora Behavioral Health Systems, LLC

Aurora Behavioral Health - Tempe

Bayless Healthcare Group

Black Family and Child Services, Inc.

Canyonlands Healthcare

ChangePoint Integrated Health

Chicanos Por La Causa

Child & Family Support Services

CODAC Health Recovery Wellness, Inc.

Community Bridges, Inc.

Community Health Associates, Inc.

Community Partners Integrated Healthcare

Community Partnership Care Coordination

Community Provider of Enrichment Services, Inc.

ConnectionsAZ

Cope Community Services

Copper Springs Hospital

Cornerstone Behavioral Health El Dorado

Crisis Preparation & Recovery, Inc.

Crossroads Mission

Easter Seals Blake Foundation

Ebony House, Inc.

Family Service Agency

Helping Associates, Inc.

Hope Inc.

Horizon Health and Wellness

Intermountain Centers for Human Development

Jewish Family & Children's Services

La Frontera Center, Inc.

La Frontera EMPACT

Lifewell Behavioral Wellness

Little Colorado Behavioral Health Centers

Marana Health Center

Marc Community Resources

Maricopa County

Mohave Mental Health Clinics, Inc.

National Council on Alcoholism Greater Phoenix

Native American Connections

Old Pueblo Community Services

Palo Verde Behavioral Health Hospital

Partners in Recovery

Pathways or Arizona, Inc.

Pinal Hispanic Council

PSA Behavioral Health Agency

Quail Run Behavioral Health Hospital

Recovery Innovations

San Carlos Apache Healthcare Corporation

Southeastern Arizona Behavioral Health Services

Southwest Behavioral Health Services

Southwest Human Development

Southwest Network

Spectrum Healthcare Group

Steward Healthcare

St. Elizabeth's Health Center, Inc.

Terros Health

The Crossroads, Inc.

The Guidance Center, Inc.

The Haven

The Phoenix Shanti Group

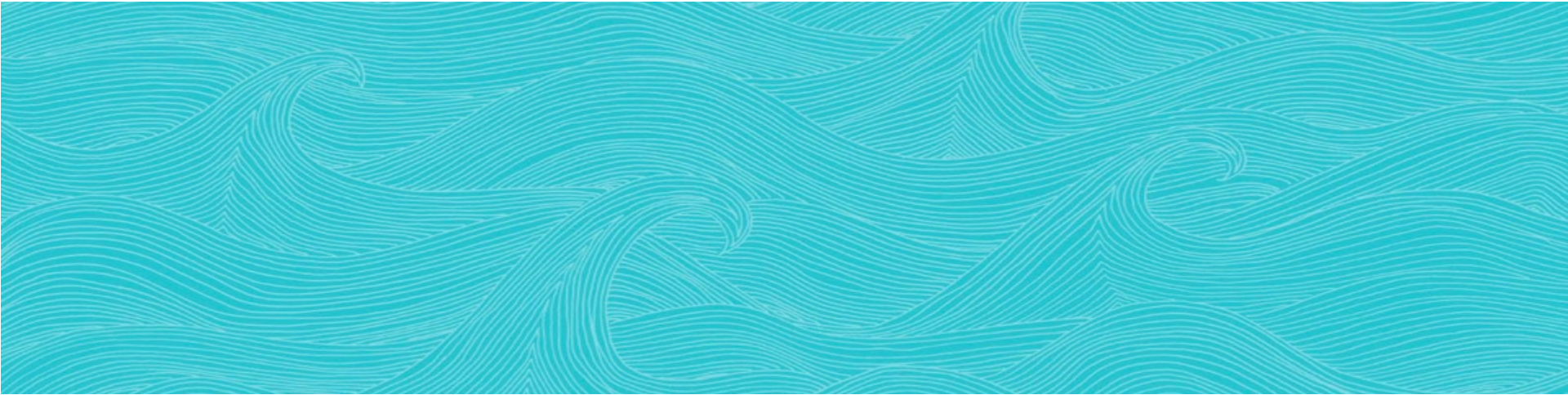
Touchstone Health Services

Valle del Sol

Valley Hospital

West Yavapai Guidance Clinic

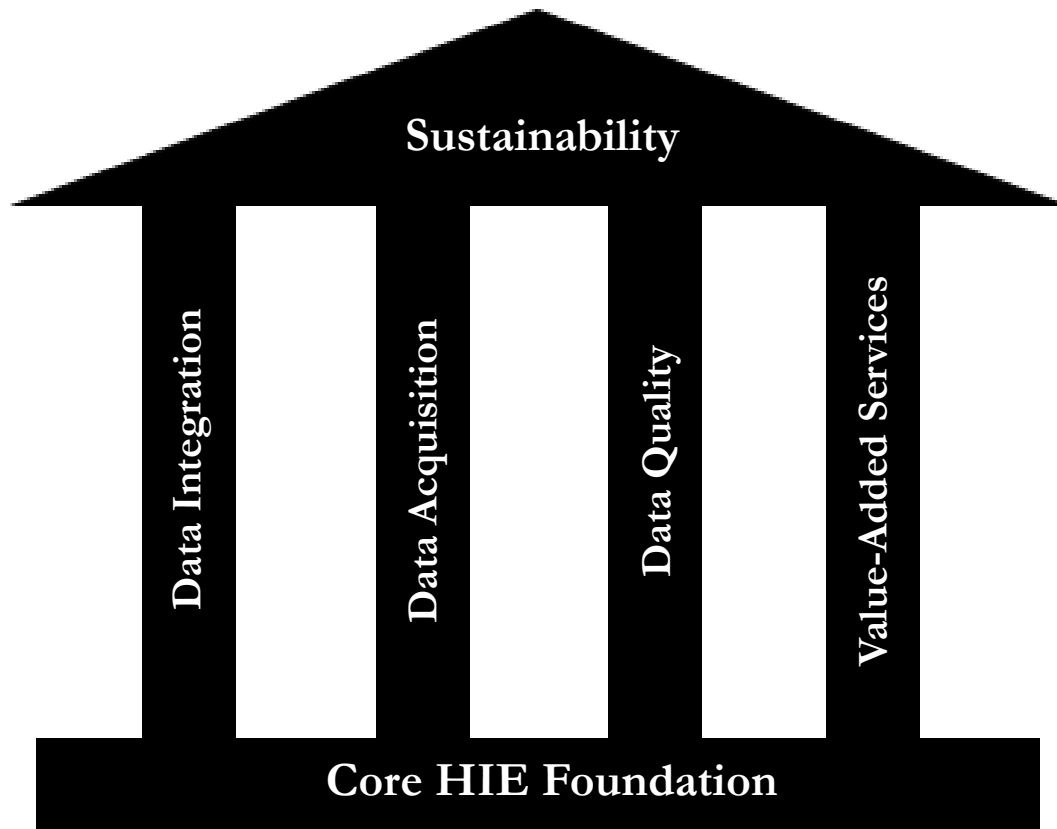
# 2020 – 2022 Strategic Business Plan



# 2017 – 2019 Strategic Business Plan

## 4 Pillars of Success

Active Participation  
+  
Strategic Collaboration  
+  
Participant Value  
+  
Data Integrity  
=  
**Sustainability**



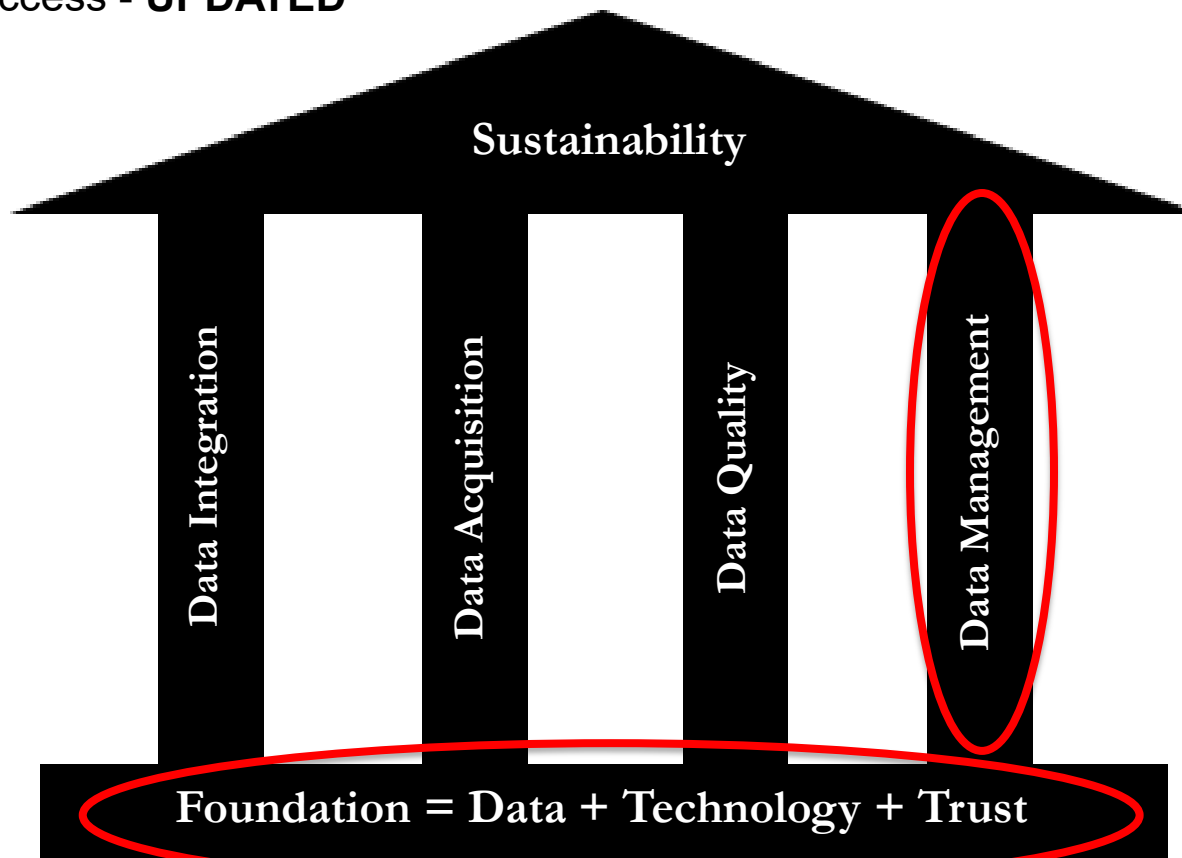
# 2020 – 2022 Strategic Plan: Stakeholder Input

We interviewed 36 participant organizations and collaborators

<b>Hospitals &amp; Health Systems</b>	<b>Behavioral Health</b>
Abrazo Health	Community Medical Services
Banner Health	Partners in Recovery
Dignity Health	<b>Long-Term &amp; Post-Acute</b>
HonorHealth	Dependable Health Care
Steward Health Care Systems	Hospice of the Valley
Valleywise Health	Mountain Valley Regional Rehab Hospital
Mount Graham Regional Medical Center	Villa Maria Care Center
Northern Arizona Healthcare	<b>Health Plans</b>
Phoenix Children’s Hospital	Arizona Complete Health
Yavapai Regional Medical Center	Blue Cross Blue Shield of Arizona
Yuma Regional Medical Center	Cigna
<b>ACOs &amp; Clinically Integrated Networks</b>	Magellan Healthcare
Arizona Care Network	Mercy Care
Commonwealth	Steward Health Choice Arizona
Equality Health	UnitedHealthcare
<b>Community Providers &amp; FQHCs</b>	<b>Others</b>
Adelante Healthcare	AHCCCS
El Rio Health Center	Arizona Pharmacy Association
North Country Healthcare	Az Council of Human Service Providers
Pendleton Pediatrics	Radiology Limited
	Sonora Quest Laboratories

# 2020 – 2022 Strategic Business Plan

## 4 Pillars of Success - UPDATED



## 2020 – 2022 Strategic Plan – Opportunities

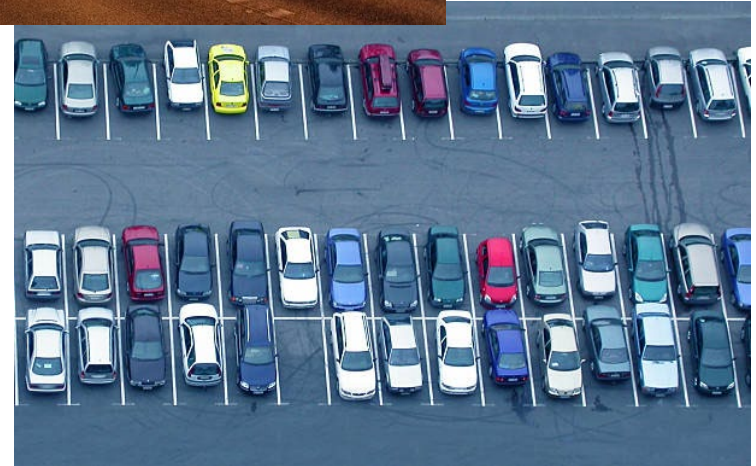
11 Categories of New Services, Enhancements and Improvements:

- Additional Data Types
- Alerts
- Care Coordination Tools
- Interoperability & Infrastructure
- Public Health
- Quality Improvement & Research
- Non-HIPAA Uses
- Queries, Reports & Analytics
- Registry Services
- Service Improvements
- Miscellaneous

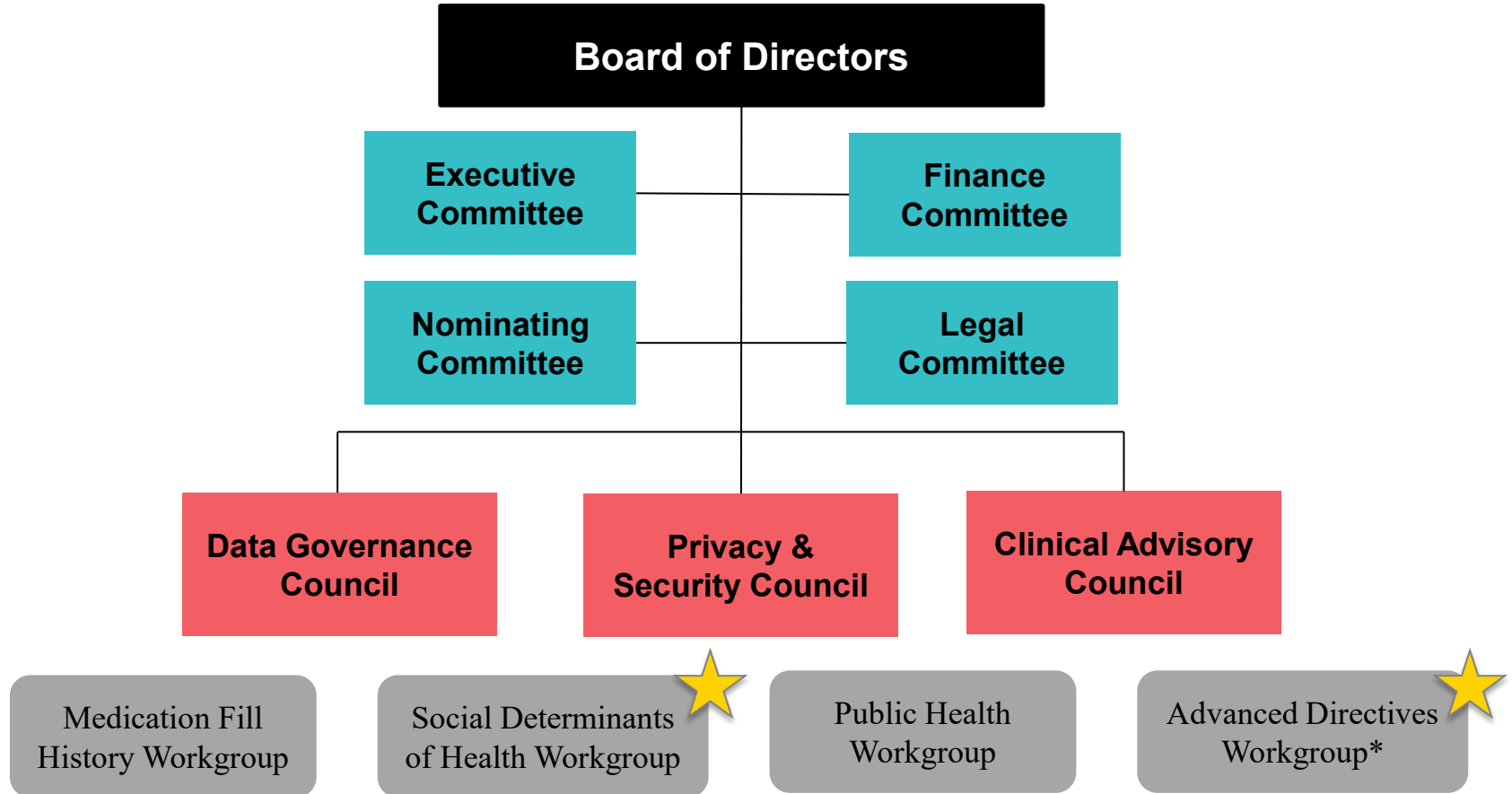
# The Roadmap

Opportunities are:

- On the Road
- On the Ramp
- In the Parking Lot



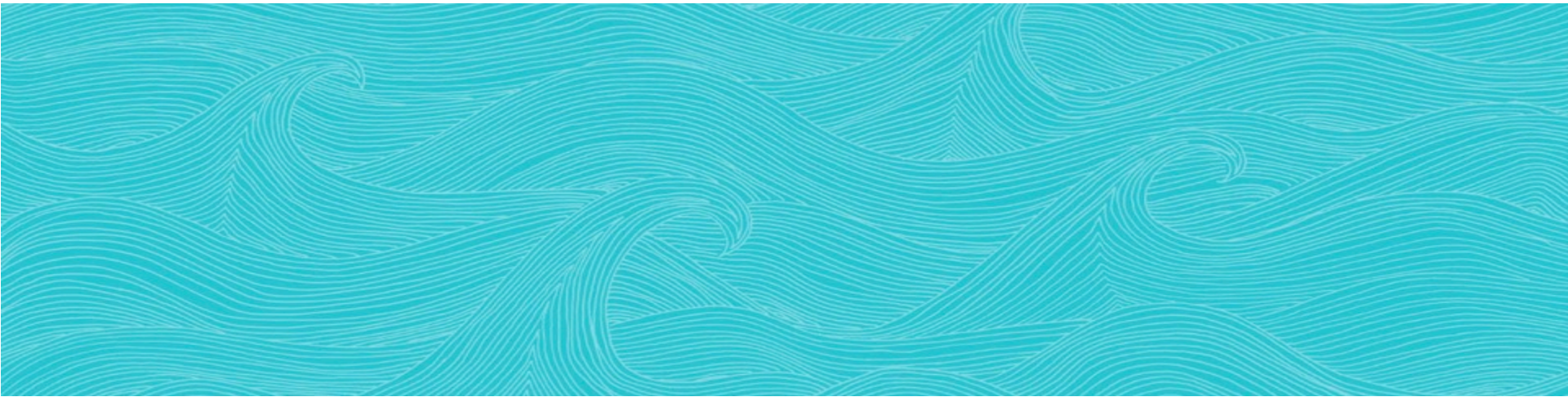




\* Under development

<https://healthcurrent.org/about-us/governance-councils/>

# Upcoming Activities & Opportunities



## The HIE 3.0 Transition – Health Current’s New HIE Platform

- Growth outpaced current platform capabilities
- New platform is expected to deliver:
  - Scalability – significant reduction in downtime
  - Improved user experience
  - Flexibility in configuration
  - Forward-thinking interoperability approach (APIs, etc.)
- Next Steps
  - Phase 1: Alerts transitioning first, then Portal access
  - Phase 2: Protected data (Part 2/BH) transitioned



# Future DAP HIE Requirements & Incentives

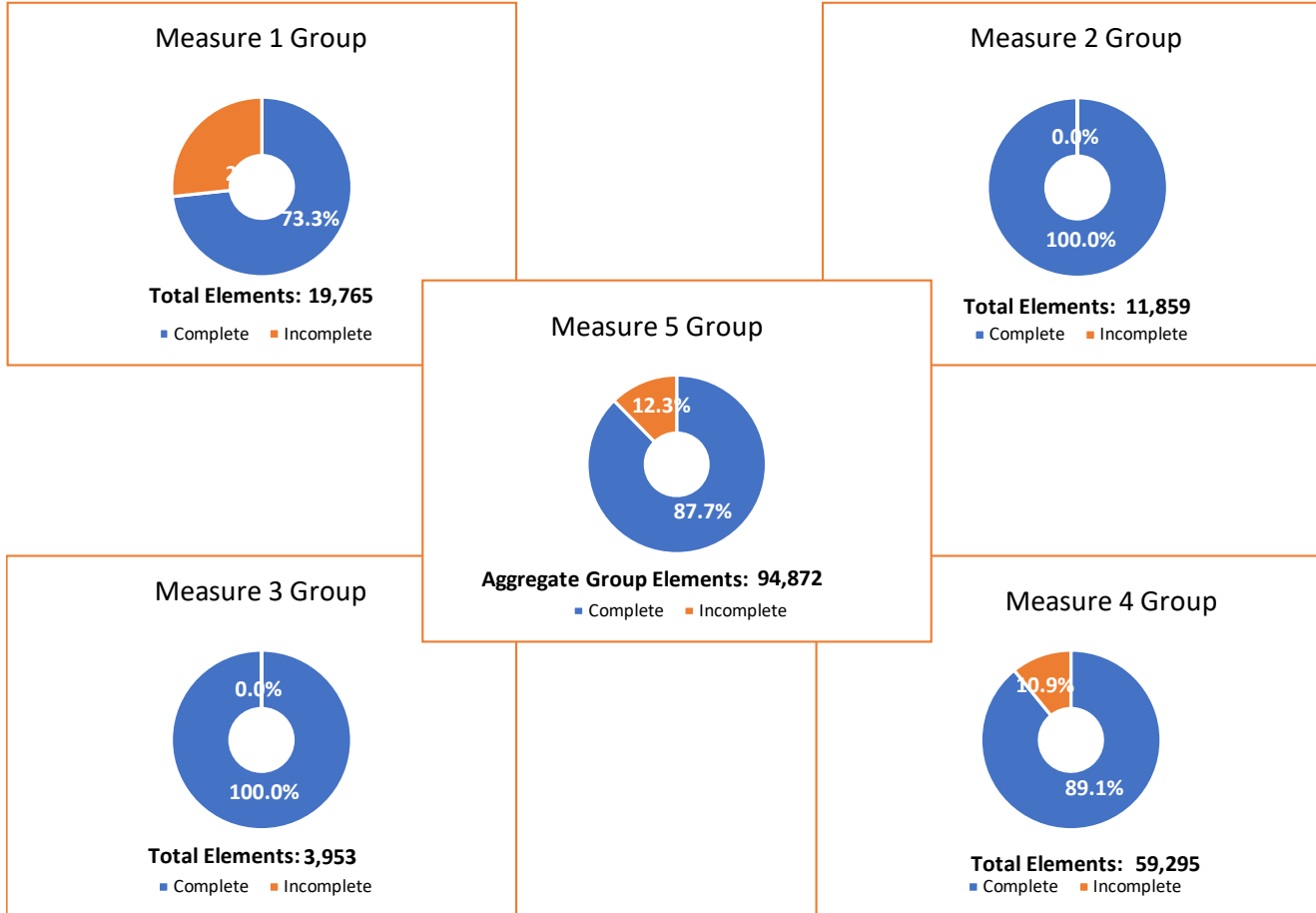


## Attachment C – HIE Strategy by Provider Type

HIE DAP Criteria	CYE 17	CYE 18	CYE 19	CYE 20	CYE 21	CYE 22	CYE 23	CYE 24	CYE 25
Hospitals	Agreement	Agreement	Milestones	Data Prep	Data Quality	Data Quality	Data Quality	Data Quality	Data Quality
IHS/638 Facilities					Milestones	Data Prep	Data Quality	Data Quality	Data Quality
Integrated Clinics (Ics)			Milestones	Milestones	Data Prep	Data Quality	Data Quality	Data Quality	Data Quality
BH OP Clinics & Ics					Data Access	Milestones	Data Prep	Data Quality	Data Quality
Nursing Facilities						Milestones	Data Prep	Data Quality	Data Quality
HCBS Providers							Data Access	Milestones	Data Prep
Physicians, PAs, etc.							Data Access	Milestones	Data Prep

Agreement	Execute agreement and electronically submit information.
Milestones	LOI with milestones for: execute agreement, approve SOW, transmit ADT, and transmit lab/radiology data. For non-inpatient facilities, transmit registration events and encounter summaries.
Data Access	Execute agreement and access HIE data via HIE services.
Data Prep	LOI with milestones for: submit immunization data (if applicable), execute data quality SOW, and submit data quality profile.
Data Quality	Measure data quality in first quarter of calendar year using a metric to be defined.

# Data Quality Profile for ADTs – SAMPLE



## On the Horizon

- New HIE platform transition
- More data! More data! More data!
- Data quality! Data quality! Data quality!
- Customized data delivery
- Increased value through differentiated & aligned services
- Medication fill history, claims data, etc.
- Nationwide interoperability
- **Advance Directives Registry**
- **SDOH Closed Loop Referrals**
  - In alignment w AHCCCS WPCI

# Health Plan Workgroups

- 1) Health Plan Part 2 Access & Beneficiary Consent
  - Met once in fall 2019
  - Going to conduct 1 – 2 pilots with health plans
- 2) Claims Data Acquisition Strategy
  - Targeting first meeting in February
- 3) Health Plan Best Practices/Use Case Opportunities
  - Targeting first meeting in Q2 2020
- 4) Health Plan Membership Files
  - First meeting TBD
- 5) **NEW: Legal Requests/Amendments**
  - Targeting first meeting in Q1 2020

## Opportunities for Alignment & Coordination

- Participate in workgroups
  - Health Current workgroups such as SDOH & Advance Directives
  - Health plan specific workgroups
  - Send contacts to Melissa and copy Richard Love (contact info on slide 27)
- Support HIE recruitment aligned with your needs
  - Opportunity to collaborate and design customized recruitment strategy
  - Focus areas include high volume AHCCCS providers, DAP-incentivized providers, alignment with strategic plan, etc.
  - Interested to meet? Contact Melissa.





# Questions

## Contact Info

Melissa Kotrys

Chief Executive Officer

[melissa.kotrys@healthcurrent.org](mailto:melissa.kotrys@healthcurrent.org)

**For additions to workgroups or to schedule meetings, please copy:**

Richard Love

Executive Assistant

[richard.love@healthcurrent.org](mailto:richard.love@healthcurrent.org)





healthcurrent